
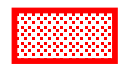


NOTES

1. Do not scale from drawing.
2. All details are based on information provided by Chesterfield Borough Council and the Environment Agency.
3. This drawing is to be read in conjunction with the Appendix B and the addendum to the SFRA report.
4. Development sites comprise a mixture of the following:
 Commitments - Sites which currently have either outline or detailed planning permission.
 Local Plan Sites - Areas which have been identified in the Local Development Plan for future redevelopment.

KEY

-  District Boundary
-  Development sites

Rev	Date	Drawn	Design	Chk'd	app'd
C	February 09	SA	VT	VT	GEK
B	December 08	AJ	VT	VT	GEK
A	October 08	AB	VT	SCL	GEK

Client: Chesterfield Borough Council

Project: Chesterfield, Bolsover, NE Derbyshire SFRA

Title: Development Sites - Chesterfield Area 05

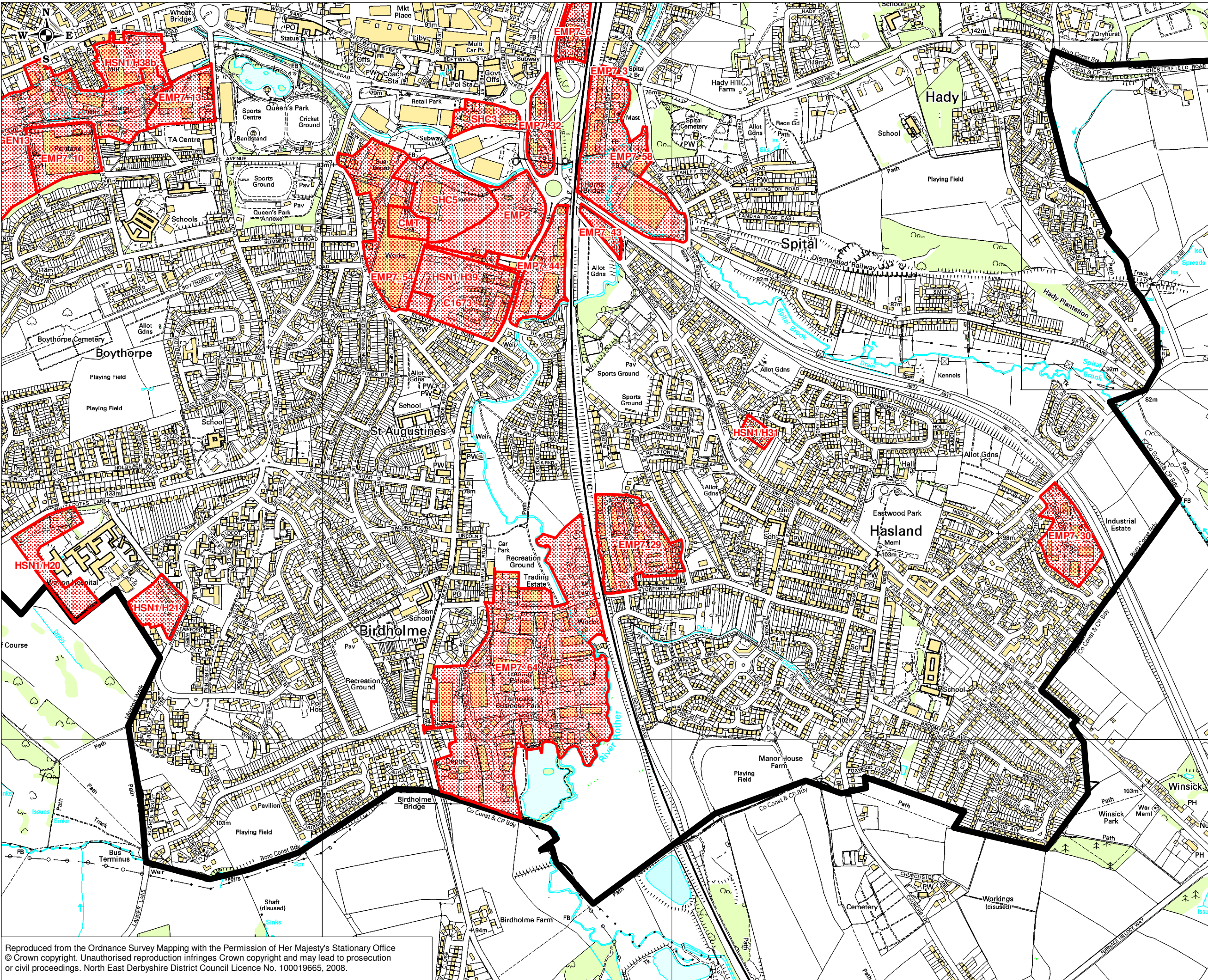
Design:	VT	Drawn:	AB
Chk'd:	SCL	Scale:	1:10,000@A3
app'd:	GEK	Date:	APRIL 08

FABER MAUNSELL | AECOM

5th Floor
 2 City Walk
 Leeds, LS11 9AR
 www.fabermaunsell.com

Tel: 0113 391 6800
 Fax: 0113 391 6899

Location:
 Dwg: **55328/C/A/05** Rev: **C**



- NOTES**
1. Do not scale from drawing.
 2. All details are based on information provided by Chesterfield Borough Council and the Environment Agency.
 3. This drawing is to be read in conjunction with the Appendix B and the addendum to the SFRA report.
 4. Development sites comprise a mixture of the following:
 Commitments - Sites which currently have either outline or detailed planning permission.
 Local Plan Sites - Areas which have been identified in the Local Development Plan for future redevelopment.

KEY

- District Boundary
- Development Sites

C	February 09	SA	VT	VT	GEK
B	December 08	AJ	VT	VT	GEK
A	October 08	AB	VT	SCL	GEK
Rev	Date	Drawn	Design	Chk'd	app'd
Client:	Chesterfield Borough Council				
Project:	Chesterfield, Bolsover, NE Derbyshire SFRA				
Title:	Development Sites - Chesterfield Area 06				
Design:	VT	Drawn:	AB		
Chk'd:	SCL	Scale:	1:10,000@A3		
app'd:	GEK	Date:	APRIL 08		

FABER MAUNSELL | AECOM

5th Floor
 2 City Walk
 Leeds, LS11 9AR
 www.fabermaunsell.com

Tel: 0113 391 6800
 Fax: 0113 391 6899

Location:
 Dwg: **55328/C/A/06** Rev: **C**