



KEY AREAS

Collaboration between UoD and RPC on health and deprivation mapping/modelling

Staveley Healthy Living Centre

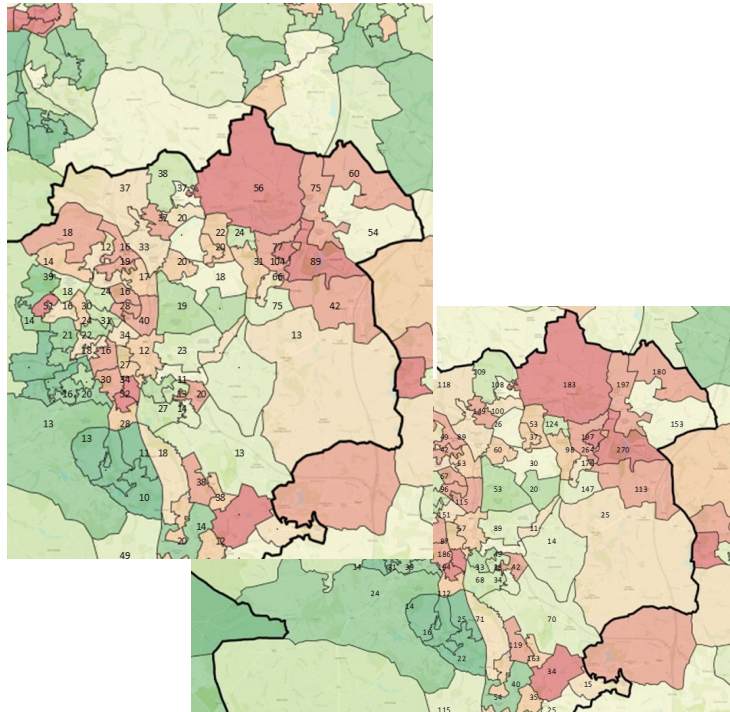
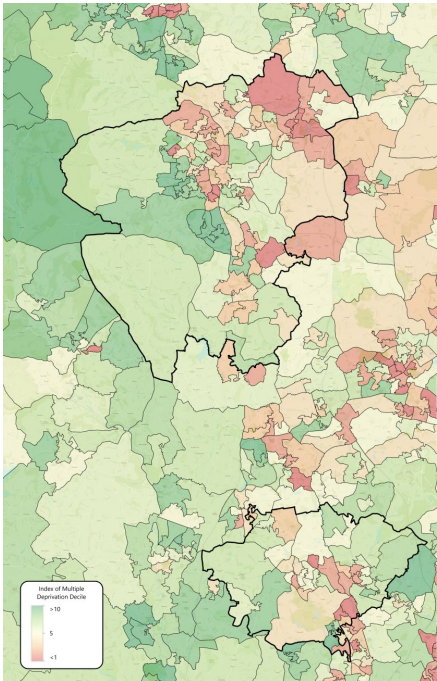
Active Healthy Lives

Worsening health inequalities due to PCN structures

Data modelling:

In collaboration with Jack Sutton at UoD we are developing the statistical methods to synthesise health care data and population and environment data into a predictive model of need to help target resources and interventions.

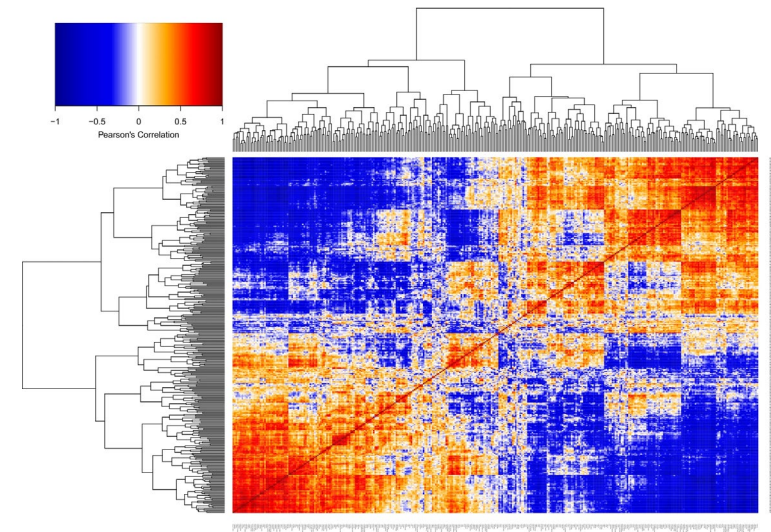
Progress so far



Challenges:

Lack of interest from Chesterfield GP Practices in participating

Having to pursue other avenues to access the data

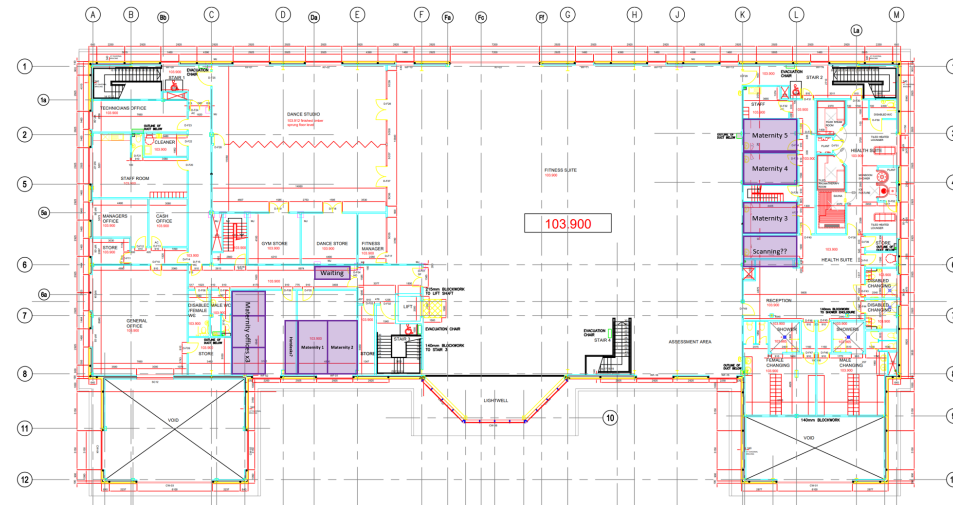
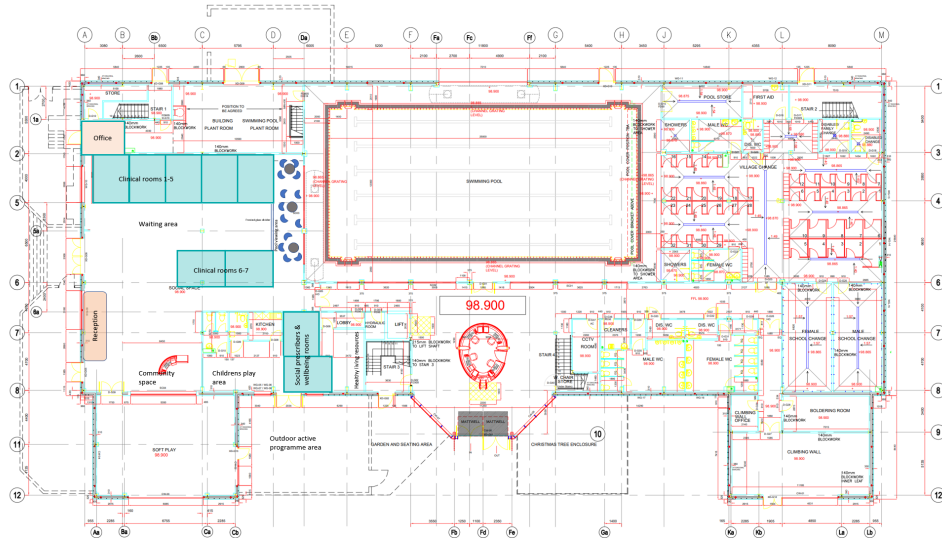


Staveley Healthy Living Centre

Lots of enthusiasm for turning it into a Staveley Health and Wellbeing hub

Community Midwifery hopefully in in next 3 /12

Lots of “state estate” synergies. CRH keen BUT financial challenges ahead. Need to pressure ICB



Indicative plans for excellent midwifery unit and 7 clinical rooms plus social prescriber and creche facilities

Clay Cross Town deal is ahead in terms of health & wellbeing hub concept!

We have the ability to push for disruptive change in delivering health care to a disadvantaged community.



Active Healthy Lives

In collaboration with the education sector via Ian Wingfield we are beginning to understand barriers to activity in young people.

Park Run takeover piloted in September, planned again for Spring, would like to have a Staveley Town Deal presence alongside RPC/Live Life Better Derbyshire, push for higher community turn out – Park Walk etc

Working with the voluntary sector to understand how to deliver a healthy eating agenda in a deprived area

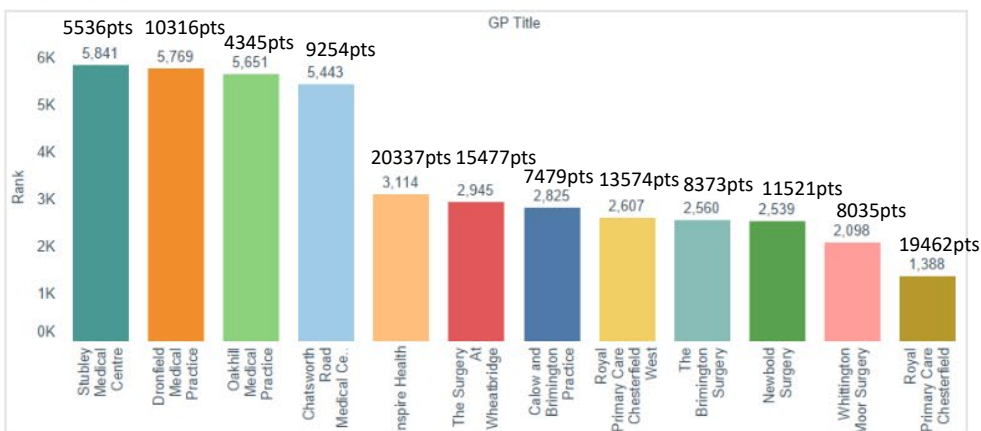
The structure of the Chesterfield & Dronfield PCN is exacerbating health inequalities experienced by Staveley.

Practices are ranked on LSOA deprivations, Practice ranked 6444 serves the wealthiest population in England (its in Wokingham). Practice ranked 1 serves the most deprived population in England (its in Liverpool).

PCNs are ranked similarly with PCN in position 1264 being in the wealthiest population area and PCN ranked 1 in the poorest population area. C&D is ranked 551 out of 1264 PCNs in England.

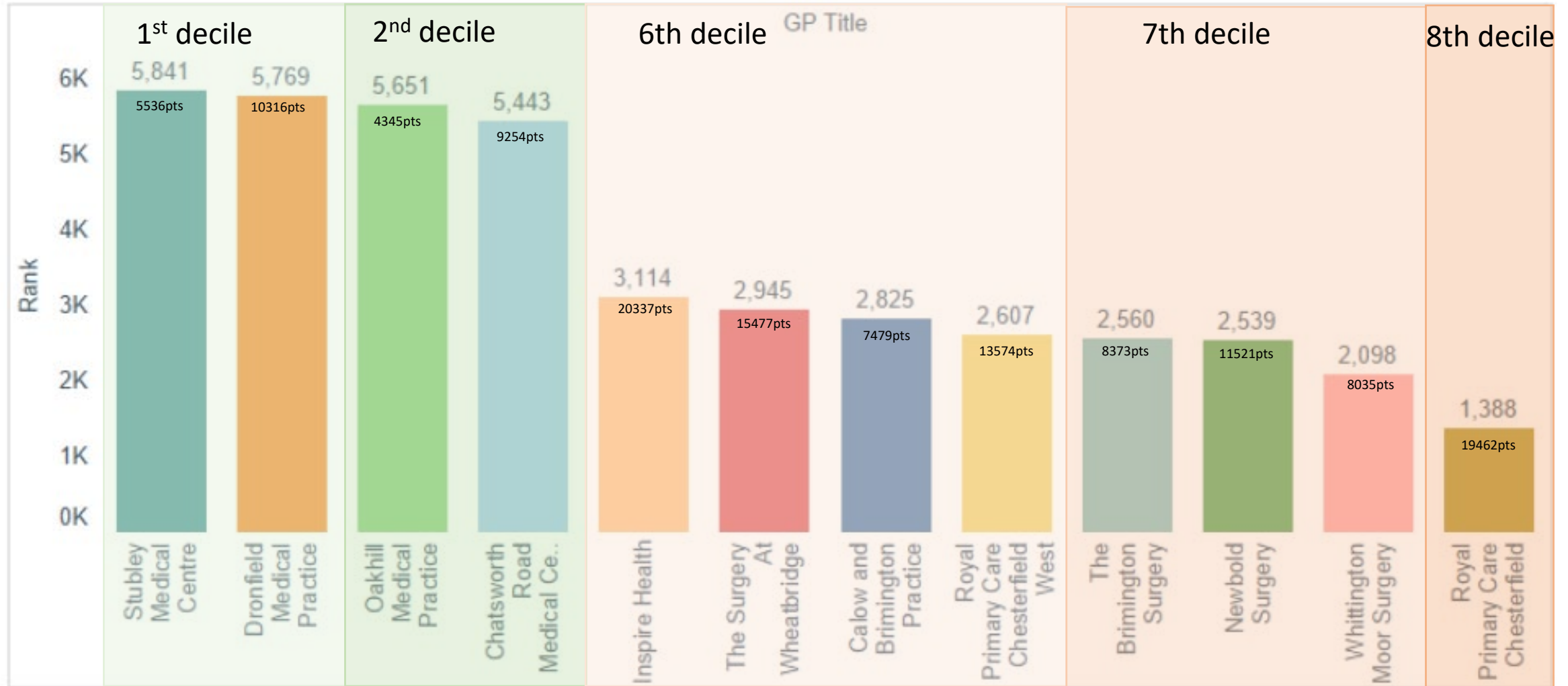
It is abnormally large, run by a private for profit limited company and due to “the tyranny of the average” it obscures the deprivation experienced by ~30k people in Staveley area.

GP practice position [U](#)

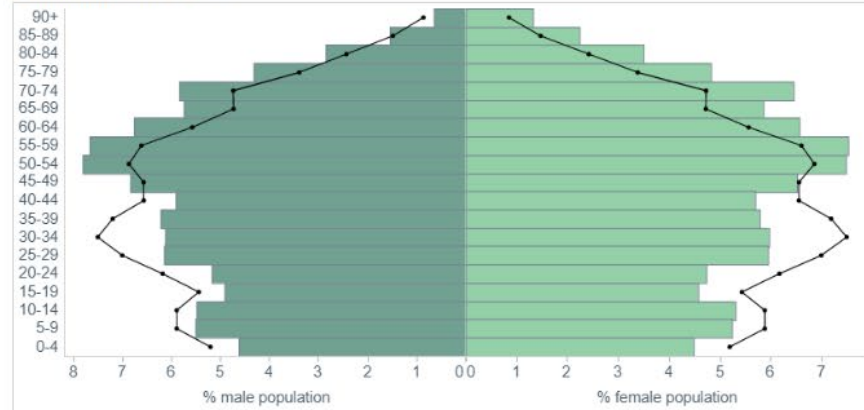


Most wealthy

More deprived



Population overview ⓘ



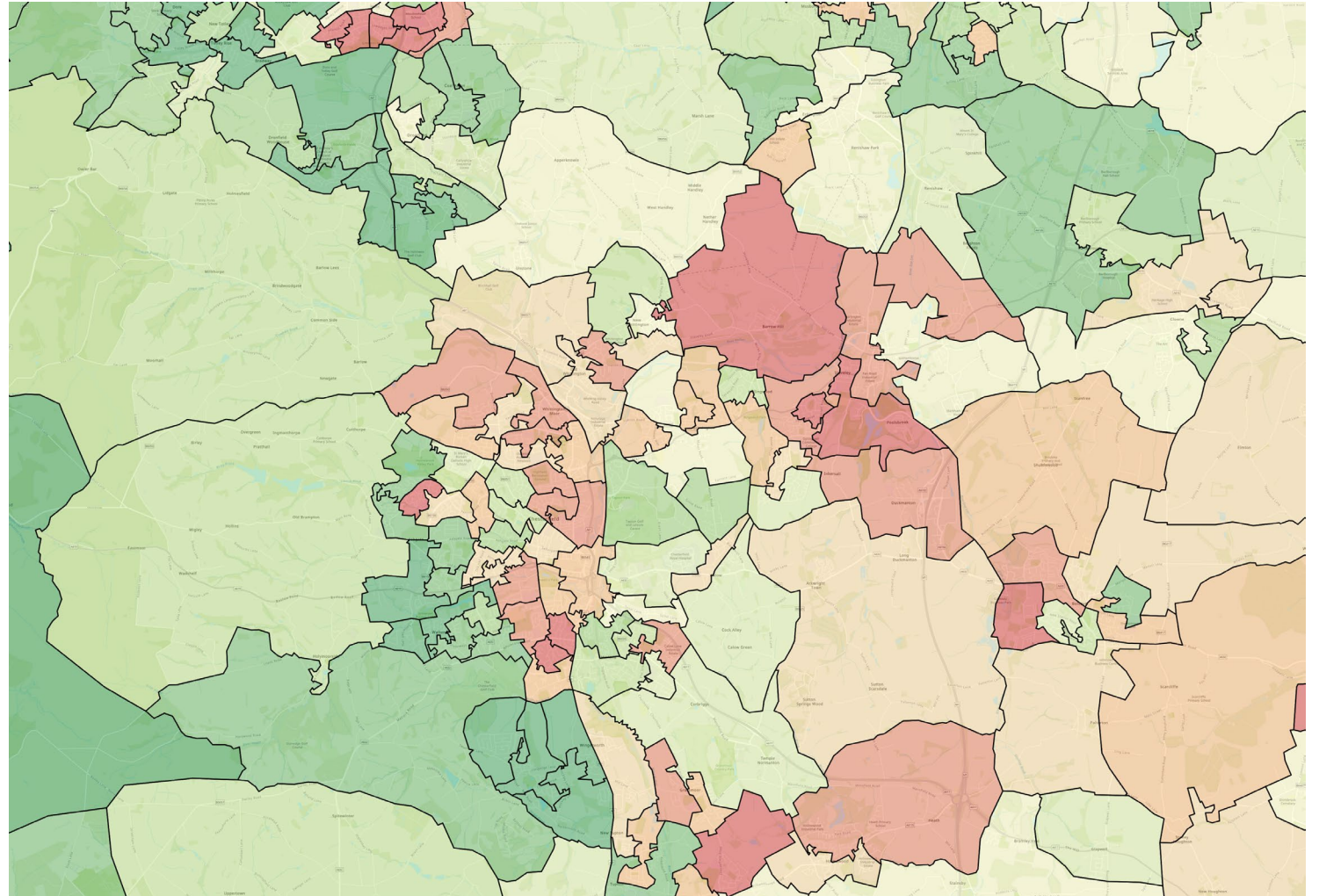
This chart shows the registered population breakdown of your selected area by quinary age group and sex. Please click a bar of interest to go to indicator.

Deprivation table by national decile

Decile	Count	Trend	Deprivation decile 1 most deprived	10 least depriv.
1	9,668	↑	~7.5%	~10.5%
2	20,599	↑	~15.5%	~10.5%
3	16,078	↑	~12.5%	~10.5%
4	15,898	↓	~12.5%	~10.5%
5	13,081	↑	~10.5%	~10.5%
6	7,329	↓	~6.5%	~10.5%
7	15,738	↓	~12.5%	~10.5%
8	4,357	↑	~4.5%	~10.5%
9	18,428	↓	~14.5%	~10.5%
10	11,661	↓	~9.5%	~10.5%

Percentage of population: - - - National — Regional ↑ Increasing ↓ Decreasing

This chart shows the deprivation breakdown of your selected area by percentage of population. Please click a bar of interest to go to indicator.



Board is asked to note:

The forward thinking decision to make health and wellbeing integral to the regeneration of Staveley is yielding new collaborations, developing new tools and techniques that have potential national applications.

Board is asked to consider:

Writing as Staveley Town Deal to GP Practices serving the Staveley area asking them to contribute data for the analysis.

Writing to the ICB raising concerns about exacerbation of health inequalities and an explanation for how the current PCN structure can meet the needs of a natural community like Staveley.

Ways to support CRH NHS FT in collaboratively making the most of the opportunity at Staveley Healthy Living Centre.

Invite Prof Bola Owolabi to Staveley in support of the collaborative approach to addressing health inequalities in Staveley.