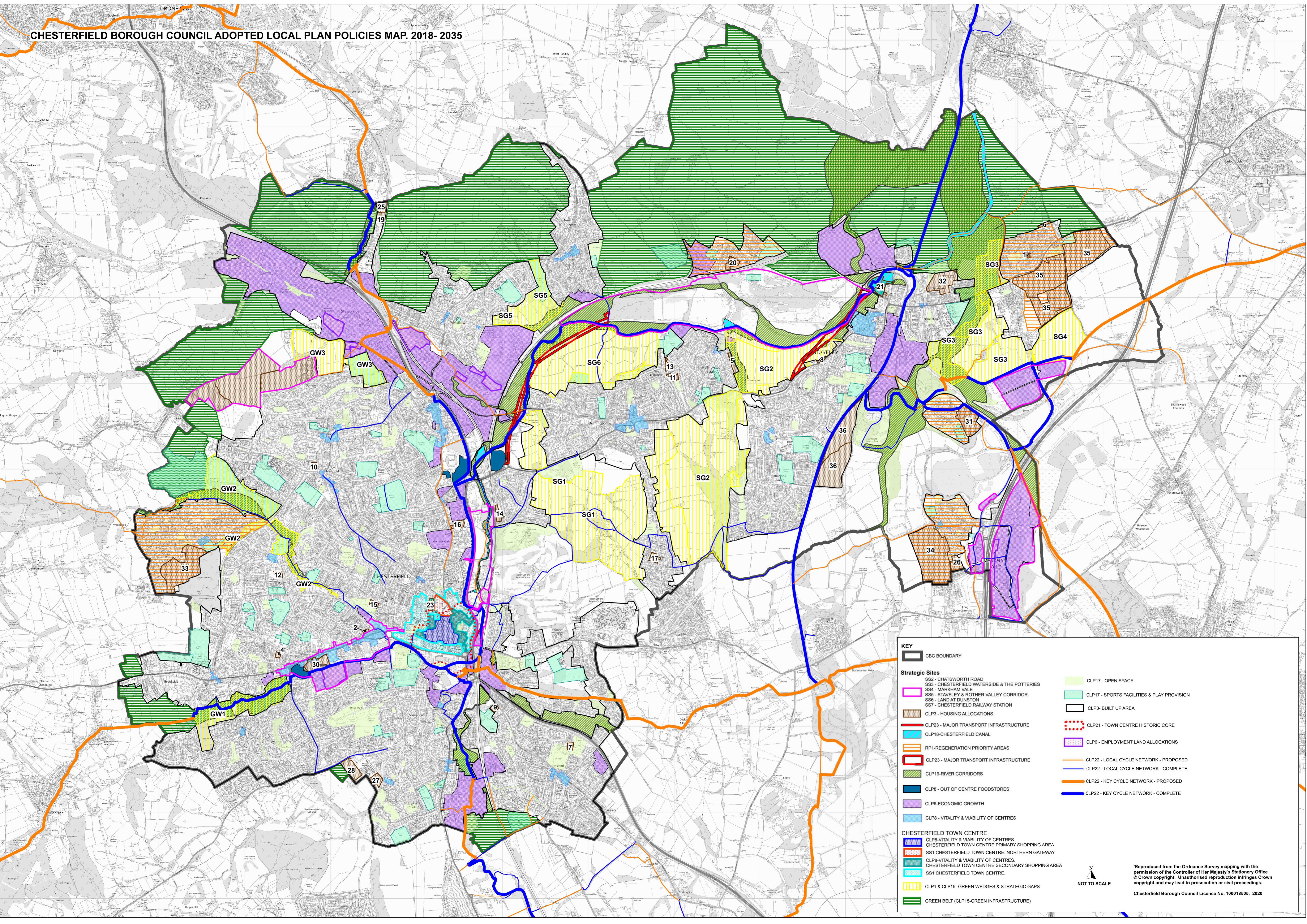


CHESTERFIELD BOROUGH COUNCIL ADOPTED LOCAL PLAN POLICIES MAP. 2018- 2035



KEY

- ▬ CBC BOUNDARY

Strategic Sites

- SS2 - CHATSWORTH ROAD
- SS3 - CHESTERFIELD WATERSIDE & THE POTTERIES
- SS4 - MARKHAM VALE
- SS5 - STAVELEY & ROTHER VALLEY CORRIDOR
- SS6 - LAND AT DUNSTON
- SS7 - CHESTERFIELD RAILWAY STATION
- CLP3 - HOUSING ALLOCATIONS
- CLP23 - MAJOR TRANSPORT INFRASTRUCTURE
- CLP18 - CHESTERFIELD CANAL
- RP1 - REGENERATION PRIORITY AREAS
- CLP23 - MAJOR TRANSPORT INFRASTRUCTURE
- CLP19 - RIVER CORRIDORS
- CLP8 - OUT OF CENTRE FOODSTORES
- CLP6 - ECONOMIC GROWTH
- CLP8 - VITALITY & VIABILITY OF CENTRES

CHESTERFIELD TOWN CENTRE

- CLP8 - VITALITY & VIABILITY OF CENTRES
- CHESTERFIELD TOWN CENTRE PRIMARY SHOPPING AREA
- SS1 CHESTERFIELD TOWN CENTRE, NORTHERN GATEWAY
- CLP8 - VITALITY & VIABILITY OF CENTRES
- CHESTERFIELD TOWN CENTRE SECONDARY SHOPPING AREA
- SS1 CHESTERFIELD TOWN CENTRE
- CLP1 & CLP15 - GREEN WEDGES & STRATEGIC GAPS
- GREEN BELT (CLP15 - GREEN INFRASTRUCTURE)

- CLP17 - OPEN SPACE
- CLP17 - SPORTS FACILITIES & PLAY PROVISION
- CLP3 - BUILT UP AREA
- CLP21 - TOWN CENTRE HISTORIC CORE
- CLP6 - EMPLOYMENT LAND ALLOCATIONS
- CLP22 - LOCAL CYCLE NETWORK - PROPOSED
- CLP22 - LOCAL CYCLE NETWORK - COMPLETE
- CLP22 - KEY CYCLE NETWORK - PROPOSED
- CLP22 - KEY CYCLE NETWORK - COMPLETE

NOT TO SCALE

*Reproduced from the Ordnance Survey mapping with the permission of the Controller of Her Majesty's Stationery Office © Crown copyright. Unauthorised reproduction infringes Crown copyright and may lead to prosecution or civil proceedings. Chesterfield Borough Council Licence No. 100018505, 2020