

Your Chesterfield

Putting our communities first



Improving health
and wellbeing in
our communities
see pages 8 to 9

Devolution: what
it means for
Chesterfield
see pages 4 to 7



Welcome

Up and down the country discussions are being held about the best way of devolving powers from London to a local level (see pages four to seven).



We believe that being part of the Sheffield City Region devolution arrangements rather than the North Midlands (Nottingham, Nottinghamshire, Derby and parts of Derbyshire) arrangements offers Chesterfield residents and businesses the best opportunities to prosper.

It is certainly an issue that has aroused passion and emotions in Chesterfield and I would have been disappointed if it had been any different.

I'm Chesterfield born and bred. If you cut me open I would have Chesterfield written on one side and Derbyshire on the other. So I've been very clear from the start that Chesterfield is a Derbyshire town and will always be a Derbyshire town. Changing that has never been on the agenda and it never will be.

We must never lose sight of the fact this is about economic matters and getting hold of

powers and funding that are held by London. It's not about the running of day-to-day traditional council services such as street cleaning, rubbish collection, sports centres and theatres. Nor is it about county council services like schools, adult care, children's services and libraries.

We're not merging with Sheffield City Council – or any council.

This is about us creating jobs opportunities for young people desperately struggling to find work. It is about supporting Chesterfield businesses who want to expand but need staff with the right skills to do so.

Before making your mind up on this issue I would urge you to read all the facts on the subject and then give your views in the public consultation later this year.

Are we accessible to you?

کیا ہم تک آپ کی رسائی ہے؟ اگر نہیں تو ہمیں بتائیے!

你可覺得易於與我們接觸？若不同的話，請提出要求。

Czy łatwo jest skontaktować się z nami? Jeżeli nie, powiedz nam o tym!

Siamo accessibili nei vostri riguardi? In caso contrario rivolgetevi a noi!

We want everyone to be able to read our publications.

We aim to provide what you need to be able to understand our information or talk or write to us.

On request we will provide free of charge:

- Language interpreters, including for sign language
- Translation of written material into other languages
- Material in braille, large print and recorded onto CD.

Please contact us:

General enquiries:
01246 345345

Text:
07960 910264

Website:
www.chesterfield.gov.uk

Email:
info@chesterfield.gov.uk

Get in touch

We are always keen to hear your comments about Your Chesterfield.

Email:
john.fern@chesterfield.gov.uk

Telephone:
01246 345245

Published by Chesterfield Borough Council, Town Hall, Rose Hill, Chesterfield, Derbyshire, S40 1LP

Get the latest news

Follow us on:
Twitter @ChesterfieldBC
Like us on Facebook -
ChesterfieldBoroughCouncil

Website:
www.chesterfield.gov.uk

Delivering essential services

Council Tax for Chesterfield Borough Council services is to increase for the first time in three years.

The portion of Council Tax bills that goes on paying for services we provide will increase by an average of 6.4p a week or £3.33 a year for the average band A tax payer. This will see the yearly cost rise from £96.59 to £99.92 for all services the borough council provides (see back page).

After freezing our share of Council Tax bills for two years the council has decided on a 3.5 per cent rise as local authorities up and down the country face the toughest year of Government austerity cuts since they began seven years ago.

The Government funding we receive is 41 per cent lower – almost £4 million – than it was when the cuts began in 2010. By 2019/20 it will have reduced by 60 per cent – a fall of £5.8 million.



Some of the key projects we delivered with your Council Tax in the past year:

- Opened the new £11.25 million Queen's Park Sports Centre
- Gained the nationally recognised Green Flag status in five of our parks and open spaces
- Through our business advisors we helped attract new businesses to the town with the number of employers increasing from 2,910 to 3,190
- Worked with developers to approve plans to redevelop the former Co-op store
- Opened the £350,000 Eastwood Park sports pavilion (shown above)

Where your Council Tax goes

Although Chesterfield Borough Council collects Council Tax from residents, we keep only 10 per cent to pay for services we provide, including: bin collections, street cleaning, sports and park facilities, regeneration, theatres and tourism.

- Derbyshire County Council receives 74 per cent of the Council Tax you pay for services including education, social services and roads
- Derbyshire Constabulary receives 11 per cent
- Derbyshire Fire and Rescue receives five per cent.

Derbyshire County Council is raising its share of the Council Tax bill by 3.99 per cent, with two per cent of this increase being spent specifically on the adult social care services they provide.

Derbyshire Constabulary and Derbyshire Fire and Rescue are increasing their portions of the Council Tax by 1.99 per cent and 1.98 per cent respectively.

Securing the best devolution deal for Chesterfield

We are applying to join a devolution deal that could bring millions of pounds and hundreds of job opportunities to Chesterfield and Derbyshire.

The Sheffield City Region devolution deal will enable Chesterfield to get access to a funding pot of £900 million over the next 30 years.

It will also see powers held by ministers and civil servants in London – on issues such as housing, skills and training, business support and transport - transferred down to a local level.

The decision by Chesterfield's councillors - which was overwhelmingly supported by councillors in all three political parties represented on the council - is the start of a process that will include a public consultation, likely to be in late spring or early summer.

The final decision will be taken by the Secretary of State for Communities and Local Government in the autumn.

The deal will mean:

- No changes to Chesterfield's geographical boundaries – Chesterfield will remain in Derbyshire as it is now.
- Chesterfield Borough Council continues to run all the services it does now with no other council having influence over them.
- Derbyshire County Council continuing to run all its services as it does now with the exception of transport, where there would have been some change no matter which devolution option was chosen.

The additional devolved powers will be managed by a combined authority, which is made up of a group of councils led by an elected mayor.

Chesterfield is applying for an equal seat at the table of the Sheffield City Region Combined Authority alongside Sheffield, Barnsley, Rotherham and Doncaster councils and potentially Bassetlaw District Council. This builds

on the strong relationships that have already delivered significant investment in Chesterfield from the Sheffield City Region.

Chesterfield Borough Council has also decided to apply to become a non-constituent member of the North Midlands Combined Authority, which is itself currently negotiating a devolution deal with the government. This would also have an elected mayor managing the additional powers gained from devolution.

If formed, this would be made up of Nottingham City and Nottinghamshire County councils, most of the Nottinghamshire district councils, Derby City and Derbyshire County councils and three of the eight Derbyshire district councils - Bolsover, Derbyshire Dales and North East Derbyshire district councils.

These three Derbyshire district councils will continue to be non-constituent members of the Sheffield City Region Combined Authority.



Helping to train apprentices

What will the Sheffield City Region devolution deal mean to Chesterfield?

- Funding to support work on the Peak Resort development in Unstone, which will create 1,600 jobs
- Funding to help build Basin Square, the commercial heart of the £300 million Chesterfield Waterside scheme, which is expected to create 400 jobs
- Funding to develop a scheme at the town centre's Northern Gateway, increasing the attractiveness of Chesterfield for shoppers and visitors. This will generate 500 jobs and support the redevelopment of the old Co-op building
- Additional planning and housing powers that could help deliver new housing in places such as the Staveley and Rother Corridor
- The creation of the Sheffield City Region Growth Hub, providing a one-stop-shop of support for new and existing Chesterfield businesses
- Giving local businesses access to a £52 million funding pot to support capital investment that creates new jobs
- Access to a £17 million Skills Bank Fund that will help businesses provide 42,000 employee qualifications over six years. Many Chesterfield companies are already part of the Skills Made Easy programme, which supports them to take on apprentices and train their workforce



Helping improve transport links

Visit www.chesterfield.gov.uk/devolution to find out more, where you can also see a short video which explains what the devolution decision means.



Helping attract new businesses like at Markham Vale

Frequently asked questions about devolution

What is devolution?

Devolution is the passing of powers and responsibilities held by the national Government in London to regions elsewhere in the country.

It gives us more control over things that we want for our town, so we can decide at a local level what matters to us and our future.

Does this mean Chesterfield will leave Derbyshire?

No, joining the Sheffield City Region Combined Authority will not make any change to Chesterfield's geographical boundaries (in the same way we wouldn't have become part of Nottinghamshire if the alternative North Midlands devolution area option had been chosen). Chesterfield is and will remain a part of Derbyshire.

Are we merging with Sheffield City Council?

No, definitely not. We are not merging with Sheffield City Council – or any council. Sheffield City Council will continue to be in charge of day-to-day issues in their area and we and Derbyshire County Council will continue to be in charge of ones in our area. Their schools, social services, rubbish collection, street cleaning and so on will have nothing to do with us and they

will have nothing to do with the same services in Chesterfield.

Will we be handing Chesterfield Borough Council's powers to another council?

No, all services will continue to be delivered by Chesterfield Borough Council.

Will all services provided by Derbyshire County Council be affected?

No. With the exception of some transport powers Derbyshire County Council will continue to provide its services in Chesterfield. These include schools; children and family social care services, including adoption and fostering; adult social care services; libraries; youth centres; recycling and waste collection centres; trading standards and register offices among others.

Changes to their transport powers would be required under any devolution deal in order to persuade central government to devolve more powers and funding to a local area.

What is the difference between Sheffield City Region Combined Authority and Sheffield City Council?

Sheffield City Council runs services for its residents in the same way Chesterfield Borough Council and Derbyshire County

Council runs services for Chesterfield residents.

Sheffield City Region is a completely different organisation set up to manage devolved powers, which are different to everyday local council decisions.

The Sheffield City Region Combined Authority would be made up of local council leaders from Chesterfield, Sheffield, Barnsley, Doncaster and Rotherham as full members. Bassetlaw is also considering whether to become a full member.

Bolsover, Derbyshire Dales and North East Derbyshire district councils will continue to remain non-constituent members.

Why are we joining the Sheffield City Region when we are part of Derbyshire?

Chesterfield has been an active member of the Sheffield City Region since joining the Sheffield City Region Local Enterprise Partnership in 2010. This recognises the fact that Chesterfield's economic links are largely with the Sheffield City Region area, with lots of retail, commuting and business done both ways across traditional geographical boundaries.

Businesses in the town tell us that their trade is much stronger in this area than to the East Midlands area outside of north Derbyshire.

Has the final decision already been made?

No. Councils across Derbyshire were asked to give their views first and indicate which devolution deal they would like to be part of and which combined authority they would like to become a full member of.

This is the start of a process which will include Government 'tests' to ensure that what is proposed makes sense from an economic perspective.

The process will also include public and business consultation, likely to be in late spring or early summer before a Government decision in the autumn.

Who makes the final decision?

Greg Clark, the Secretary of

State for Communities and Local Government. This would then need to be ratified by Parliament.

Why do we have to have an elected mayor to manage these new powers?

Chesterfield Borough Council doesn't want an elected mayor but the Government will not give local areas the full powers without one. It is part of the package that comes with devolution.

Can't we have a Derbyshire mayor?

The Government won't allow a Derbyshire only mayor.

As we went to press a devolution deal was still being negotiated for the North Midlands area. Should a deal

be done, it's not known where the North Midlands mayor would be based but the person would be responsible for services in Nottingham City, Nottinghamshire, Derby City and three of the eight districts of Derbyshire.

Will we lose our Chesterfield mayor?

No. Our mayor performs a civic rather than political role. That won't change. An elected mayor would only be responsible for functions that are specifically part of the devolution deal, such as transport, infrastructure investment, supporting business growth and providing skills and training.

Did you ask residents what they want?

We did and will do again before a final decision is taken this autumn.

- In 2013 there was a public consultation about us joining the Sheffield City Region Combined Authority.
- In December 2015 and January 2016, there was a six week public consultation about the Sheffield City Region devolution deal.

Information about the Sheffield City Region devolution deal has been published in local newspapers, on local radio and television, on their websites and social media sites and on the council website and social media.

Members of the business community have also had briefings and e-newsletter updates.

All district and borough councils were asked to make a decision by 4 March to stick to the Government timetable that will enable mayoral elections to be held in May 2017.

The timetable for this process includes another public consultation before a final decision is made.

The process we followed was similar to other district councils in Derbyshire.

Why should Chesterfield have to compete with other councils for funding?

That is the way the Government has created devolution deals.

The amount of funding an area gets will depend on the quality of the business cases put forward and being able to show how these will deliver jobs and business growth to an area.

Businesses in Chesterfield, supported by the council, have a good track record of doing this. The council has also put in its own bids.

Please note: This information gave the latest position as we went to press but the subject is fast moving. Keep up-to-date with developments at: www.chesterfield.gov.uk/devolution



Helping our communities get active

A pilot project is helping Chesterfield people take advantage of free or low cost opportunities for health and fitness in their local areas.

Improving the health and wellbeing of our communities is a key priority for the council because Chesterfield contains some of the country's most deprived areas.

People living in these areas may not be able to easily afford health and fitness activities, meaning they may also lead less active lives. This can have a serious effect on the health of local people as it can, in turn, result in higher rates of obesity in both adults and children and lead to shorter life expectancy rates.

So we are working with Derbyshire County Council and our partners in Active Chesterfield to run a pilot project in Rother ward to help people identify places they can use to get more active.

We have worked with two groups of mums who are regular users of Birdholme Children's Centre.

They came with us to walk round their local area to

provide us with feedback on their local parks, spaces, halls and other facilities.

Jemma Longden took part with her six month old daughter, Ava.

Jemma said: "It's been nice to do something for the community. Although I'm quite fit and active and my eight year old is too - taking part in swimming and gymnastics - I know not everybody is the same.

"We went round places like Queen's Park and the football pitches. It was good to be able to find out what is out there."

Casey recently moved to the area with her daughter, ten month old Annie-Mai.

She explains: "We just walked around the local area. I had been quite nervous before meeting the other mums but everyone was so nice and it



was good to find out where the park is and what happens there.

“Now I know what’s there, I will go to Queen’s Park, especially when the weather’s better and I want to go to try out the new leisure centre.”

To help parents with young children get active and meet new people, we offer a series of buggy walks in the borough.

This is an opportunity to explore your local area and get fit while having fun.

Walks last between 45 minutes and an hour, and are followed with a cuppa and a chat.

Walks take place come rain or shine, although in extreme weather we may need to cancel so please do check before setting out. There’s no need to book, just come along: parents, grandparents and carers are welcome.

Queen’s Park

Second and fourth Monday of each month from Chesterfield Town Children’s Centre, South Lodge, Boythorpe Avenue, S40 2BF.
Meet at reception at 10.15am for 10.30am start.
Tel: 01629 533570.

Birdholme Children’s Centre

First and third Monday of each month from Birdholme Children’s Centre, Church Street South, Birdholme, S40 2TF.
Meet at reception at 1.15pm for 1.30pm start.
Tel: 01246 276764.

Hasland Children’s Centre

First, third and fifth Tuesday of each month from Hasland Children’s Centre, the Green, Chesterfield S41 0LN.
Meet at reception at 9.45am for 10am start.
Tel: 01629 532610.

We offer other walking for health sessions for all ages. For more information, contact Tina Hensey, community lifestyles officer by email: tina.hensey@chesterfield.gov.uk or call 01246 345669.

Bank holiday bin collections

With two bank holidays coming up on Monday 2 May and Monday 30 May, we are reminding residents about how their bin collections will be affected.

The bins that are usually collected on these Mondays will be collected instead on Saturday 30 April and Saturday 28 May respectively.

Crews may be working earlier so please make sure your bin is out by 7am on collection day.

This applies to black, blue and green bins. Please remember, we cannot accept any side waste with your black bin but we can accept extra recycling with your blue bin. If you have any small electrical items, such as alarm clocks, old phones, radios or toasters, you can leave these on top of your blue bin.

To recycle batteries, please place them in a plastic bag and tie this to the handle of your blue bin.

To check when your bins will be collected at any time, visit our website: www.chesterfield.gov.uk/bindates, enter your street name and your collection dates will be displayed.



Make sure you're registered to vote

With the elections for Derbyshire's next police and crime commissioner taking place on Thursday 5 May, we are reminding residents to make sure they are registered to vote by Monday 18 April.

Being registered will also enable you to vote in the European Union referendum on Thursday 23 June.

The easiest and simplest way to register is online: www.gov.uk/register-to-vote.

To register, you will need:

- Your national insurance number (which can be found on your national insurance card, or in official paperwork such as payslips, or letters about benefits or tax credits)
- Your name and address
- Your date of birth.

For more details, contact our elections team by email: elections@chesterfield.gov.uk or call 01246 345402.

Council approves policy on hate preachers

Councillors have approved a new framework for events where there are concerns about speakers promoting messages of hate and intolerance.

When an event is planned for one of the venues we own the guidance will be used to decide whether the event should take place.

If the event is in a private venue, we will inform the owner of our concerns and ask them to reconsider the booking.



Cheaper online booking at our theatres

We have made booking tickets online at our theatres cheaper and easier.

Now, instead of paying a booking fee of six per cent each time you book tickets online, we have introduced a flat fee of 50p.

This means that the price you pay for tickets will be the same however you book: whether this is online, over the phone or in person at our box office, located in the Visitor Information Centre in Rykneld Square.

Booking online is the easiest and quickest method, this means you can:

- Book tickets any time you like and avoid the queues
- Choose your own seat: meaning you can reserve the seat of your choice, which row you like, in the middle or end of a row
- Print off your tickets at home – saving you queuing at the box office to collect your tickets before the show.

See pages 22 and 23 for shows coming up at the Pomegranate Theatre and the Winding Wheel.

To book online, visit the Chesterfield Theatres website: www.chesterfieldtheatres.co.uk

Listing for sculpture

A historic sculpture owned by the council has been given listed status.



Historic England has decided that the sculpture called Rosewall – or Curved Reclining Form - by Barbara Hepworth should join 40 other post-war art pieces to be protected.

The sculpture, which is on Future Walk at West Bars, was bought by the council from Royal Mail in 2009 when the artwork was in danger of being sold and moved out of the town.

Enforcing fire safety

A recent change in the law means that private landlords are required to make sure that homes they rent to tenants are fitted with working smoke alarms.

It is estimated that this will prevent 26 deaths and 670 fire-related injuries in England each year.

In some cases, landlords will also be required to fit working carbon monoxide detectors.

We will have enforcement powers to make sure the law is being upheld.

Landlords who fail to make sure their properties meet the required fire safety standards can receive a maximum fine of £5,000.

Maintaining priorities despite tough financial future

The financial challenges we face as a council are similar to those of balancing your family budget – except on a larger scale.

If we have less money coming in we need to spend what we do have wisely and on the things that matter most to you (see page three).

Our priorities are set out in our council plan that runs through to 2019. It can be seen at www.chesterfield.gov.uk/councilplan

Each year we also set out some key projects that we will deliver. In turn, these will help us to achieve the council plan's overall objectives.

Some highlights in the next 12 months include:

- The start of work on the Barrow Hill estate improvement programme, which will cost around £4 million.
- A £22 million programme to improve the condition of council homes as part of a rolling programme of property



repairs including re-roofing, cladding walls and replacing UPVC windows.

- A revamped website that will be easier to view on smartphones and tablets. It will also allow residents, developers and consultees to submit comments on planning applications online for the first time.
- Increasing council trading to generate income to reinvest in core council services. For example, offering roofing upgrades to private home owners at the same time we work on a neighbouring council house.
- An enforcement campaign to tackle problems of dog fouling on Chesterfield's streets, parks and open spaces.



But the scale of cuts passed from central Government to local councils is such that some tough decisions also have to be made. We have had to:

- Make further reductions to the number of senior managers saving £58,000 next year on top of the £290,000 of savings already made
- Seek staff voluntary redundancies or voluntary early retirements to save £250,000
- Save £90,000 by not filling vacant posts or delaying appointments
- Generate £50,000 of additional income from trading new services that can be reinvested into core council services
- Save £50,000 in back office efficiencies and make £22,500 of efficiency savings in building cleaning
- Invest almost £100,000 in upgrading CCTV equipment but also make £57,000 of efficiency savings.
- Generate more income through ticket price increases to reduce the running costs of council venues by £47,500
- Pass on the direct cost of credit card payment fees, saving £37,500

We've produced a short video that explains the financial challenges the council faces and what we are doing to deal with them.

See it by visiting:
www.chesterfield.gov.uk and clicking on the Council Tax 2016/17 button on the home page.

Don't miss out on your free car parking

Another priority for our spending is to maintain our popular free resident car parking offer.

You will receive your free permit with your council tax bills. It entitles you to park for free:

- Before 10am
- After 3pm
- All day on Sundays and bank holidays

For the first time the offer will enable permit holders to park for free at these times in the Queen's Park North and Queen's Park South car parks – which are the car parks either side of the old Queen's Park Sports Centre, Boythorpe Road.

The full list of car parks that the permit can be used in is:

- Albion Road
- Derbyshire Times
- Devonshire Street
- Durrant Road
- Hollis Lane
- Holywell Cross (the Donut)
- Queen's Park North
- Queen's Park South
- Spa Lane
- Station Road
- St Mary's Gate
- Theatre Lane
- West Street



Safer homes for our older residents

Keeping our tenants safe is one of our top priorities and we have been leading the way in Derbyshire by installing domestic sprinklers into our sheltered housing schemes.

The law requires all new homes built in Wales to be fitted with sprinklers and all sheltered housing complexes in Scotland. Although it is not a requirement in England, we have worked with Derbyshire Fire and Rescue Service to fit sprinklers to protect our most vulnerable tenants from serious injury or death by fire.

This is supported by figures which show that there have been no deaths in the UK as a result of fire in properties with a working sprinkler system.

Thanks to funding of £20,000 from the fire and rescue service we have recently

fitted sprinklers into Markham Court in Duckmanton and DUEWELL COURT in Barrow Hill.

This is in addition to the sprinklers that have already been installed at Catherine Court and Brocklehurst Court, both off Chatsworth Road; Glebe Court in Old Whittington and Mallard Court in Staveley.

We caught up with some of the residents at Mallard Court, where the sprinklers were installed in the winter of 2014.



Muriel Barnard (*shown left*) is 84 and has lived at Mallard Court for over 20 years, having moved in with her late husband, who died six years ago.

She says: "If I didn't live here, I would be living alone but

here you know you are secure – we have good locks on the door, spyholes on the doors of our flats so we can see if we have any visitors and we have a call from the council's Careline service each morning to make sure we are alright."

There is a sprinkler unit in each person's flat – covering the living room, kitchen and bedroom as well as in the hallways and in communal areas where residents will meet each day for a hot drink and chat as well as activities.

Fellow resident Diana Grandage (*shown far left with the oldest resident at Mallard Court, 95-year-old Margaret Hallford*), also 84, who has lived at Mallard Court for 14 years, says the new sprinklers give reassurance: "It's a question of safety. They add to the general safety and improve it – but I sincerely hope we never have to use them."

The sprinklers are sensitive enough so that only the ones in the immediate area of a fire will be activated. The plastic surround will melt causing the sprinkler to activate.

This means that it will work quickly to prevent a fire spreading to neighbouring rooms.

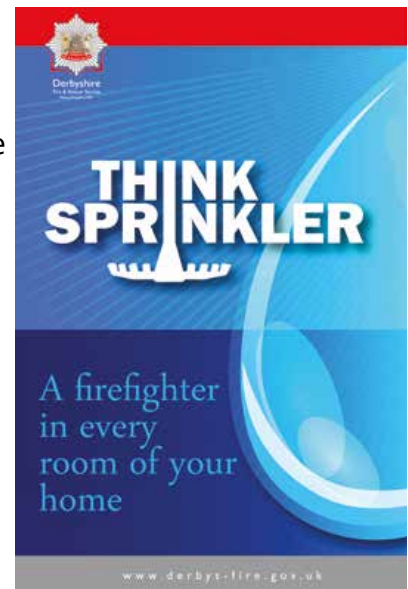
Muriel finds this reassuring. She said: "You know that something is there straight away if there is a fire, although we've not tried them, we know that it's instant and that gives us peace of mind."

Diana adds: "It gives peace of mind to our families too."

Muriel agrees: "I have family up in Northumberland and down in Northampton as well as locally. They know that living here, I feel safe and secure which is a weight off their minds."

A sprinkler system has also been fitted into the new Parkside older persons' accommodation in Stand Road.

As we went to press the new complex was preparing to open to residents who had lived there previously and also to new ones. We will bring you a look at the new facilities on offer in a future edition of Your Chesterfield.



New sports centre “as good as any in the country”

These were the words spoken by Charles Johnston, property director at Sport England at the opening of the new Queen’s Park Sports Centre in January.

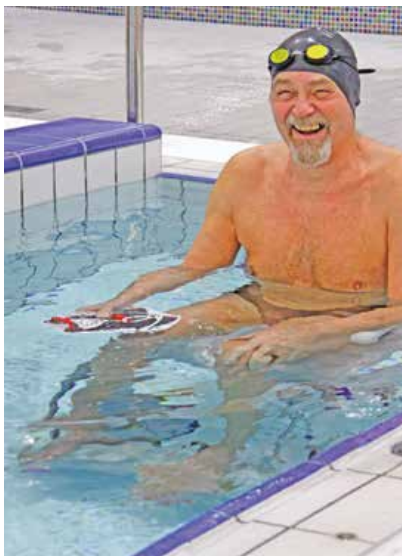
At a time when many councils are having to make difficult decisions about reducing funding for leisure activities or closing sports facilities, we have made the investment to open the new centre with state-of-the-art facilities.

Sport England praised the new centre, built on the site of Queen’s Park Annexe, as a ‘great community venue’ which will offer more people from Chesterfield and the surrounding area the opportunity to take up sport and fitness.

We caught up with some users of the new centre to find out what they think of the range of equipment and fitness opportunities on offer.

David Whyke is a disabled swimmer and regularly uses the new pool, swimming a mile each day. He says: “It’s fabulous, the disabled changing is brilliant. I can go in in my wheelchair and then straight to the pool.

“The new lift makes it so much easier to get into the pool. I used to have to swing around like Superman to get in the



water at the old Queen’s Park Sports Centre but now I can sit in a wheelchair and be lowered in.”

The original plans for the pool included only six lanes but funding of £2 million from Sport England allowed us to extend the pool to eight lanes. This is something appreciated by regular swimmer Graham Taylor, who lives in Newbold.

Graham says: “I liked the pool at the old Queen’s Park Sports Centre but this is fantastic.



“Being wider and having eight lanes means there’s more space for lane swimming and it’s easier to swim up and down.

“I really like the look of the pool and the design – it’s all bright and modern, up to the beams on the roof.

“I usually spend an hour in the gym too – it’s good to have all new machines that are easy to use.”

Helen and Richard Toft, also from Newbold, are regular users of the new 80 station gym.

Richard usually uses cardio equipment including





the cross trainer, exercise bikes and rowing machines but he also likes to try out new activities.

He says: "I used to be a member of a private gym. Although you can get memberships cheaper, they don't include as much: here you can play table tennis and racquets – I can bring my mates along to play squash."

Helen agrees. She said: "We have three children so it makes sense to join somewhere that has a swimming pool too."

"I'm enjoying using the new gym and I can sign up for classes like Body Pump and spinning."

Chesterfield College's new sport and wellbeing academy is based in the building. The college invested £2.5 million in the new centre.

Students share some of the facilities during the day in term time but with the eight lane pool and eight court sports hall, there is plenty of room for regular and casual users to use the new centre too.

You can sign up for a membership for £26.99 per month. This will allow you to use the pool, gym and fitness classes at the new centre as well as activities including squash, badminton and table tennis and the freedom climbing wall in the upstairs studio.

Membership also entitles you to use the Healthy Living Centre in Staveley.

To find out more, visit:
www.chesterfield.gov.uk/leisure



Darcie from Holme Hall Primary School helped to plant some of the spring flowering daffodil bulbs which will continue to develop and make an even bigger splash of colour next year.



Spring blooms

You won't have failed to notice the number of daffodils brightening up our borough and reminding us that spring is here.

Over the winter we planted 39,150 bulbs including daffodils, narcissi, crocuses, irises, hyacinths and tulips across Chesterfield.

More than 14,000 daffodil bulbs were planted in the Holme Hall area with the help of Holme Hall Unite, a group made up of council tenants and local residents. Areas treated included Holme Hall Crescent, Wardgate Way and Taddington Close.

Children from Holme Hall Primary School joined in the planting.

Headteacher Paul Hüsken says: "We were pleased to be invited by Holme Hall Unite to be involved in the bulb planting in the area outside school and all the children are delighted to see the results from their hard work."

The bulb planting is part of our commitment to improve the quality of life for local people.

We are encouraging people to work with us on the annual Chesterfield in Bloom campaign by joining the in Bloom committee.

The committee was set up last year and allows residents to have a say in keeping their area green and clean.

For example, members may decide to organise a litter-pick in their local area such as those held recently by Keep Britain Tidy in support of the Queen's 90th birthday.

We can provide equipment including bags and litter pickers for volunteers to use and arrange for the rubbish to be collected afterwards to make sure it is disposed of safely.

They will also help us arrange events we plan as part of the campaign.

Chesterfield in Bloom forms our entry into the East Midlands in Bloom competition.

Each year, we receive a visit from the East Midlands in Bloom committee judges who will tour the borough to see the flowers, gardens, litter-free streets and, in particular, the involvement of members of the community.

Residents and businesses can once again take part in our annual best kept garden competition held as part of the Chesterfield in Bloom campaign.

Categories in the competition include: best front garden, best back garden, best blooming pub/restaurant and best kept allotment site/allotment plot.

People who are not particularly green-fingered can still take part: our judges will take into account elements such as landscaping and people who don't have a garden can also enter the best container garden or the best kept hanging basket categories.

More information on the competition will be available on our website www.chesterfield.gov.uk and in local media from late April.

As well as entering the competition, we also have opportunities for local businesses to sponsor any of the categories in the awards. In return, they will receive thanks in all of our publicity around the competition and will also be invited to the annual awards ceremony each September.

To find out more about the Chesterfield in Bloom campaign, contact John Ramsey, the council's green spaces development officer by emailing: john.ramsey@chesterfield.gov.uk or calling 01246 345097.





Who is Granny Mary



Love your local market

A key attraction of our borough for residents and visitors alike is our traditional open-air market.

We are supporting our market traders by freezing rents at the general market, flea market and farmers' market for the coming year.

The council has also begun work with traders on both short and long term plans to make improvements to the outdoor market.

Some initial ideas are to offer incentives for new traders; improve the town centre events programme to increase the number of visitors in the town; look at whether the success of the monthly artisan markets can be followed up by other specialist market events and helping traders make greater use of social media to promote their products.

We are also working with traders to identify grant funding to carry out major redevelopments in the long term that could see the layout changed and improvements made to the stalls area.

We will be offering local people the chance to try out the life of a market trader for themselves this May as part of Love Your Local Market fortnight.

Running from Tuesday 17 to 31 May, the campaign is a national one encouraging

residents to use their local markets.

People can sign up for stalls at discounted rents and talk to a market trader champion about the life of a market trader.

Here in Chesterfield we have a variety of different markets, including the general market each Monday, Friday and Saturday, the flea market each Thursday and the farmers' market on the second Thursday of the month, each from 9am to 4pm.

We also have the popular artisan market on the last Sunday of each month from 11am to 4pm in New Square.

Held in association with The Market Co., the regular event brings together some of the finest food from often award winning local artisan producers as well as a wide selection of hand crafted items.

To sign up or to find out more, visit Chesterfield Visitor Information Centre in Rykneld Square, call 01246 345777 or 345778, visit www.visitchesterfield.info or email: tourism@chesterfield.gov.uk.

Summer opening at Revolution House

You can take a look at the way life used to be by visiting Revolution House in Old Whittington.

The historic house, which played a key role in the overthrow of King James II in 1688 is open each Saturday, Sunday and Bank Holiday Monday until 25 September from 11am to 4pm.

This year, visitors can see a selection of the Brampton pottery on display from the museum's collection.

Celebrate a decade of the walking festival

Spring is in the air and what better way to experience it than getting the family together and joining in one of the many walks featured in the tenth anniversary of the Chesterfield Area Walking Festival.

The festival runs from 7 to 15 May featuring 57 walks from one to 34 miles.

Walkers can take in some history, look at art and sculpture on the Archaeological Way or brave the 'Beast of Bolsover'.

Ten is the feature word this year, with ten mile walks on every day of the Festival including 'All the Tens', a ten mile walk on Tuesday 10 May, leaving at



10am from Number 10 the Tea Rooms in Chesterfield.

Most walks are free, so there's no excuse not to join in.

All are led by a trained guide who knows the history, wildlife and the best countryside to walk through in the beautiful north east Derbyshire landscape.

Book your walks at Chesterfield Visitor Information Centre in Rykneld Square, next to the Crooked Spire church.

Ring: 01246 345777/8

Email: tourism@chesterfield.gov.uk or book online: www.chesterfieldwalkingfestival.co.uk

Join in the fun at Chesterfield Museum

As well as the exhibitions being held this spring, Chesterfield Museum has a regular programme of events for all ages including:

- Story telling, on the first Saturday of each month, suitable for four to seven year olds.
- Children's craft workshops, on the last Friday of each month.
- Behind the scenes tours exploring the museum's store room. Find out how a museum preserves its collection for future generations.
- Meet George Stephenson, a chance to meet the famous railway pioneer and discover his connection with Chesterfield.

See more on pages 22 to 23.

The museum is open each Monday, Thursday, Friday and Saturday, 10am to 4pm. Admission is free.

What's on

Chesterfield Market

General market each Monday, Friday and Saturday. Flea market each Thursday.

Sundays 24 April, 29 May, 11am to 4pm

Artisan market in association with The Market Co.

Thursdays 14 April, 12 May, 9 June, 11am to 4pm
Farmers' market

Walking Festival

Saturday 7 to Sunday 15 May
Chesterfield Area Walking Festival (see page 21)



Chesterfield Museum

Chesterfield Museum
Open each Monday, Thursday, Friday and Saturday, 10am to 4pm. Admission free.

Tel: (01246) 345727

www.chesterfield.gov.uk/museum

Until Saturday 7 May

The Victorians

Discover what life was like in Victorian times in this interactive exhibition.



Saturdays 2 April, 7 May and 4 June, 11am and 2pm

Story telling

Stories for children aged four to seven.

Saturdays 16 April, 21 May and 11 June, 10.30am and 11.30am

Behind the scenes tours

Tours are free but must be booked in advance.

Fridays 29 April and 27 May, 11am and 2pm

Children's craft workshops

Saturday 14 May to Saturday 2 July

Cestrefeld - Medieval Town

Exhibition looking at Chesterfield in the medieval period.

Saturday 28 May, 10am to noon and 1pm to 4pm

Meet George Stephenson

Meet the famous railway pioneer and discover his connection with Chesterfield.

Revolution House

The historic house is open each Saturday, Sunday and Bank Holiday Monday until Sunday 25 September, 11am to 4pm. Admission free.

Tel: (01246) 345727

www.chesterfield.gov.uk/museum



Until Sunday 25 September

Pots in the kitchen

An exhibition exploring local pottery and its various uses in the home.

Winding Wheel

www.chesterfieldtheatres.co.uk

Box office: (01246) 345222

Thursday 7 April, 7.30pm

The Dire Straits Experience

Hits including Sultans of Swing, Brother in Arms, Romeo and Juliet and many more.

Saturday 9 April, 7.30pm

ShowaddyWaddy in Concert

Featuring all their biggest hits.

Friday 15 April, 7.30pm

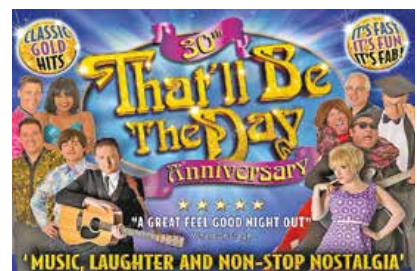
Beyond the Barricade

West End and Broadway hit songs performed by former cast members from Les Misérables.

Friday 22 April, 8pm

T.Rextasy: I Love to Boogie

Live tribute band dedicated to Marc Bolan and T.Rex.



Wednesday 27 April, 7.30pm

That'll Be The Day 2016

Fantastic line up of knock-out hits from the 50s, 60s and 70s, plus side-splitting comedy.

Thursday 28 April, 8pm, doors open 7.15pm

Spotlight Comedy Club

Featuring Charlie Chuck and Dan Bland.

Wednesday 4 May, 7.30pm

Sally Morgan: Call Me Psychic

The nation's favourite psychic is back.



Saturday 14 May, 7.30pm
Rubettes featuring Alan Williams

An evening with the original line-up of the Rubettes.

Pomegranate Theatre

www.chesterfieldtheatres.co.uk
Box office: (01246) 345222

Wednesday 6 to Saturday 9 April, 2.30pm and 7.30pm
David Copperfield Musical
Musical adaptation by Anne Dalton of Charles Dickens's favourite novel.



Wednesday 13 April 2016, 2pm, 4pm (relaxed performance) and 6pm
Northern Ballet: Tortoise and the Hare

The perfect opportunity for little ones to enjoy live ballet, music and theatre.



Thursday 14 April, 7.30pm
Debt Collectors
Reform Theatre Company - the new John Godber play.

Tuesday 19 April, 7.30pm
The Importance of Being Earnest
Pantaloons Theatre Company performs Oscar Wilde's comic masterpiece.

Wednesday 20 April, 7.30pm
The (almost) Complete History of Britain
Pantaloons Theatre Company takes a breathless race through the centuries.

****OFFER** book and pay for both Pantaloons Theatre Company plays for £24 - see website for details**



Friday 22 April, 11am and 1.30pm
Rainbow Magic Live: Saving Fairyland

Suitable for ages four plus.

Tuesday 26 April to Saturday 30 April, 7.15pm, Saturday matinee 2.15pm
Jesus Christ Superstar
Chesterfield Operatic Society presents the musical showing the last three weeks of the life of Jesus.

Tuesday 3 May, 7.30pm
At the Mountains of Madness
Icarus Theatre Collective presents the first theatre adaptation of H P Lovecraft's chilling masterpiece.

Wednesday 4 May, 7.30pm
The Trials of Galileo
Icarus Theatre Collective presents Nic Young's play about Galileo's heresy trial in 1633

****OFFER** book and pay for both Icarus Theatre Company plays for £24 - see website for details**

Monday 16 May to Saturday 21 May, evenings at 7.30pm, Wednesday matinee 2pm, Saturday matinee 3pm
Shadowlands

An all-star cast in the award winning play about Narnia author C S Lewis.

Pomegranate Screenings

Pomegranate Screenings Highlights from film and satellite broadcasts at the Pomegranate Theatre

Tuesday 12 April, 7.15pm
Royal Opera House: Giselle (certificate TBC)
A recorded broadcast of the greatest of all romantic ballets.

Thursday 21 April, 2pm
Exhibition on Screen: Painting the Modern Garden (certificate TBC)

A recorded broadcast from the Royal Academy of Arts, London on gardens in modern art.

Friday 23 April, 8.15pm
Royal Shakespeare Company Shakespeare Live (certificate TBC)
Hosted by David Tennant on Shakespeare's birthday, and screened live from Stratford-upon-Avon, this star-studded show celebrates the Bard's plays.

See full Pomegranate Screenings listings at: www.chesterfieldtheatres.co.uk/pomegranate-screenings

Handy guide to keep

This guide explains which services your council tax helps provide and how to contact the organisations providing them.

Chesterfield Borough Council receives 10 per cent of the Council Tax you pay

Contact us about:

- Abandoned vehicles
- Anti social behaviour
- Benefits advice
- Bin collections or damaged bins
- Building control
- Bulk collections
- Business rates
- Business support
- Caravan sites and illegal encampments
- Car parks (except privately run ones)
- Cemeteries
- Commercial waste
- Conservation areas
- Council Tax
- Crematorium
- Dog fouling
- Dog wardens
- Electoral registration
- Economic development
- Energy advice
- Environmental health
- Fly tipping
- Graffiti
- Homelessness
- Housing benefits
- Leisure centres (Queen's Park Sports Centre and Healthy Living Centre, Staveley)
- Licensing

- Litter problems
- Markets (indoor and outdoor)
- Museum
- Noise pollution
- Parks and open spaces
- Pest control
- Planning applications (making or commenting on one)
- Planning enforcement
- Pollution control (air, noise, odour and smoke)
- Private housing advice
- Recycling
- Street cleaning
- Stray animals
- Theatres (Winding Wheel and Pomegranate Theatre)
- Visitor Information Centre
- Welfare benefits

Council house issues

- Adaptations
- Choice based lettings (On the Move)
- Community involvement
- Decent homes
- Estate management
- Housing solutions team
- Rent payments and arrears
- Repairs/improvements
- Right to buy
- Sheltered housing

Contact us by:

- Visiting www.chesterfield.gov.uk
- Ringing 01246 345345
- Texting 07960 910264

Derbyshire Fire and Rescue Service receives 5 per cent of the Council Tax you pay

Contact them about all fire and fire safety related issues:

- By visiting: www.derbys-fire.gov.uk
- Ringing 01332 771221 for all non-emergency calls
- Ringing 999 for emergencies only

Derbyshire Police receives 11 per cent of the Council Tax you pay

Contact them about all crime issues:

- By visiting www.derbyshire.police.uk
- Ringing 101 for all non emergencies (24 hours a day)
- Ringing 999 for emergencies only

Derbyshire County Council receives 74 per cent of the Council Tax you pay

Contact them about:

- Adoption and fostering
- Adult care (including support in the home)
- Adult community education
- Blue badge scheme
- Bus shelters
- Care homes
- Care for people with disabilities
- Children's centres
- Children and family services
- Gritting of roads
- Lampposts
- Library books and services
- Pavements
- Potholes
- Public transport (although services are run by private companies)
- Records office
- Recycling and waste collection centres (rubbish tip)
- Registry services (birth, marriages, deaths)
- Roads – condition
- Roads – safety and changes to road layout
- Schools
- Street lighting
- Tapton Lock Visitor Centre
- Trading standards
- Trusted Trader Scheme
- Youth centres

Contact them:

- By visiting www.derbyshire.gov.uk
- Ringing 01629 533190
- Texting 86555

For residents of Brimington and Staveley only

Brimington Parish Council

Contact them by:

- Visiting: www.brimingtonpc.co.uk
- Ringing 01773 833805

Staveley Town Council

Contact them by:

- Visiting www.staveleytowncouncil.gov.uk
- Ringing 01246 473132