



Climate Change Annual Report

2023 - 2024

1 Contents

1 Contents.....	3
2 Foreword	4
3 Introduction	6
4 The state of the borough.....	8
Emissions	8
Impacts of climate change	10
5 Highlights of activities during 2023/24	13
Buildings and energy highlights.....	14
Travel highlights	22
Green space, land use and offsetting highlights	24
Communication, engagement, and training highlights.....	26
Data monitoring and corporate activity highlights	30
Council influence and partnership activity highlights.....	32
6 Looking forward: the coming year	39
7 Further information	40

2 Foreword

Welcome to Chesterfield Borough Council's Climate Change Annual Report for 2023/24. This report highlights some of the work we have been doing over the last year on climate change within our services and in the wider community.

Locally we have seen a record-breaking heatwave in the summer of 2022 and severe flooding in autumn 2023. We all need to take action to prepare our communities for changes in the climate, and to reduce our emissions that are causing climate change.

We declared a climate emergency in July 2019 and have set targets intended to reduce our net emissions as an organisation to zero by 2030 and support our communities to reach net zero emissions by 2050.

This is an ambitious task, and it is important to recognise that we set our achievements over the last year in the context of current financial strain. Like local authorities across the country, we are facing extreme pressures on our budgets, due to a variety of factors outside of our control. However, we continue to prioritise our climate change activity, to invest in decarbonising our properties, and to identify external funding opportunities.

This document describes our progress so far and gives an outline of the work we intend to carry out in the coming year to ensure our borough is a clean, vibrant, green community.



Councillor Martin Stone

**Cabinet member for climate change,
planning and the environment**

Chesterfield Borough Council



A note from Chesterfield Climate Change Forum member:

Last year the borough council introduced a new climate change forum to help develop the council's ongoing and future environmental plans. The forum is made up of volunteers from several different community groups, businesses and members of the public, this is supported by staff from the council and headed up by Councillor Martin Stone.

Meeting with the council regularly to review and discuss proposals, provide feedback from the wider community, discuss projects that are ongoing across the borough, and act as a public voice to help the council provide constructive plans for the people of Chesterfield. The forum is also looking to support local people, businesses, and communities by hosting events and providing information so they can develop their own climate change projects.

As a member of the public attending the forum, it is great to hear about the projects that are already in place locally and how enthusiastic people are about climate change. I personally believe it is very important for us to focus on reduction of our overall consumption and waste through schemes such as re-use and repair shops, as well as supporting biodiversity projects in our local communities.

Ashley, 25, Climate Change Forum member.



3 Introduction

In 2019 we declared a climate emergency. We set a goal of reaching carbon neutrality as an organisation by 2030, and to support the wider borough to do so by 2050.

The Climate Change Strategy 2023 to 2030 takes us up to our first major target of becoming a carbon neutral organisation by 2030, reducing our own carbon emissions, taking steps to make us less vulnerable and adapt to a changing climate.

This is our second Climate Change Annual Report. We have committed to producing these reports as part of our Climate Change Strategy so that everyone can keep track of our progress towards our climate change targets.

To ensure we stay on track for delivery we also developed a supporting delivery plan which is reviewed annually. The delivery plan identifies the key milestones, inputs, outputs and measures we will need to deliver during each year of the plan to maintain progress.

This report provides a summary of our activities over the last year, which have mainly focussed on implementing our first Climate Change Delivery Plan, with highlights across our six key themes:

1. Buildings and energy use
2. Travel
3. Green space, land use and offsetting
4. Communications, engagement and training
5. Data, monitoring, and corporate activity
6. Council influence and partnership activity

Our focus on climate change features strongly across our Council Plan and the broad range of services that we deliver, including the way we manage our parks and open spaces, our council homes, our commercial property and vehicles, and wider influence across the borough and region through our partnerships.



4 The state of the borough

Emissions

The chart below (Fig.1) shows that the average greenhouse gas emissions per person in the borough have been reducing over a long period, and remain lower than the national average.

Although there is clearly climate change activity taking place in the borough, this reduction is thought to be mostly because of the decarbonisation of the national electricity grid.

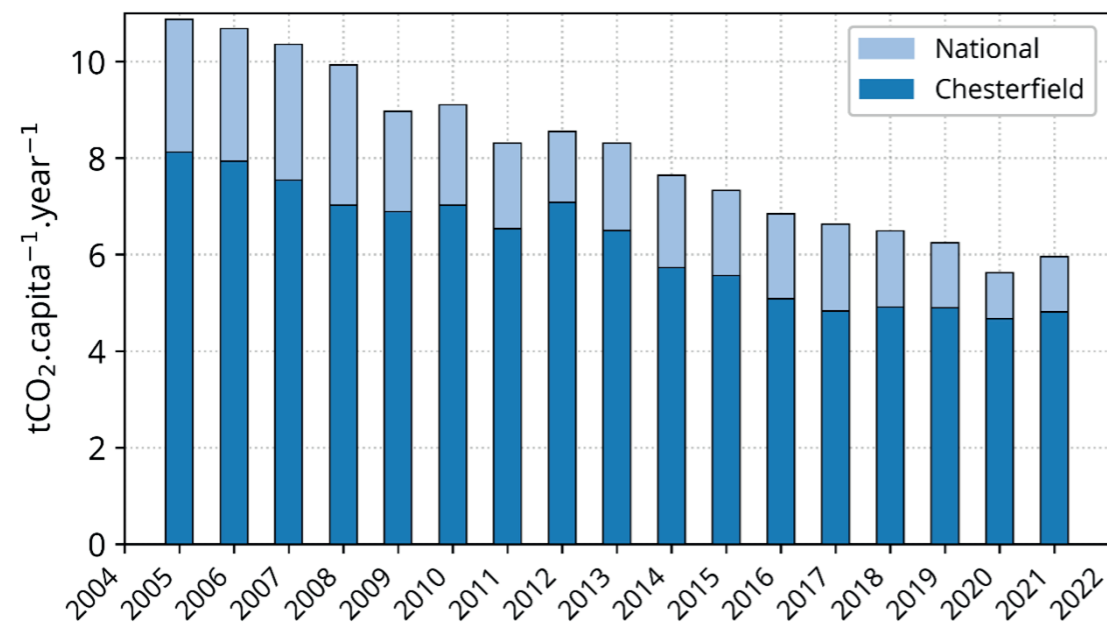
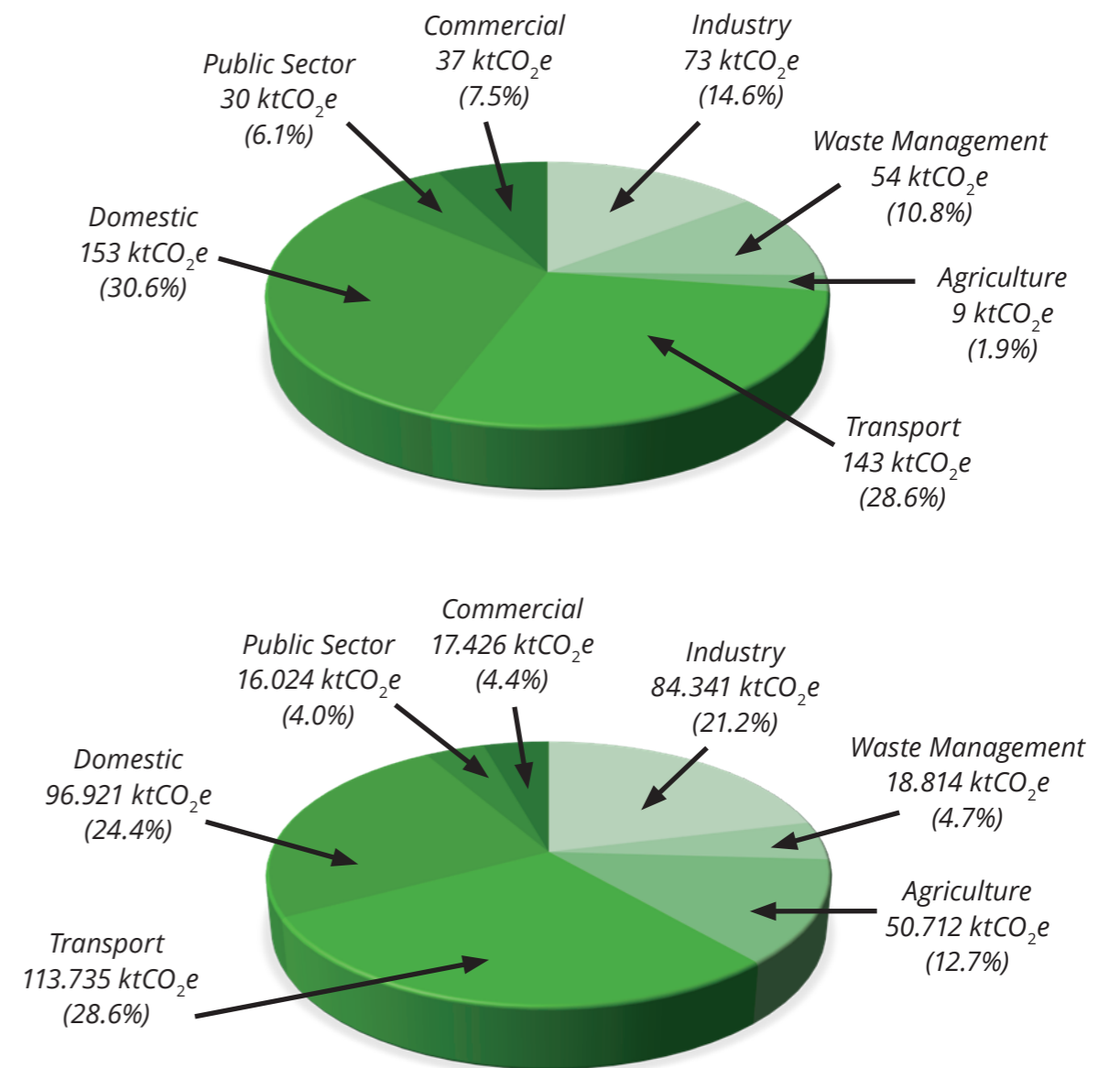


Figure 1. Per capita greenhouse gas emissions for residents in Chesterfield Borough compared with the national average, Department for Energy Security and Net Zero and Department for Business, Energy and Industrial Strategy.

When considered by sector, local greenhouse gas emissions follow a similar pattern to the national average with about two thirds of emissions resulting from transport and homes (see fig. 2). Chesterfield has a below average proportion of emissions from industrial and agricultural sources, which is unsurprising due to the mostly urban nature of the borough.

Figure 2. A comparison of emissions by sector locally (top) and nationally (bottom).



Impacts of climate change

The global climate continues to change. Figures 3 and 4 show the temperature change over time in Sheffield (our nearest weather station) and at a global level. Our local area saw a peak average temperature in the summer of 2022, and the global average temperature during 2023 was the hottest on record by a considerable margin.

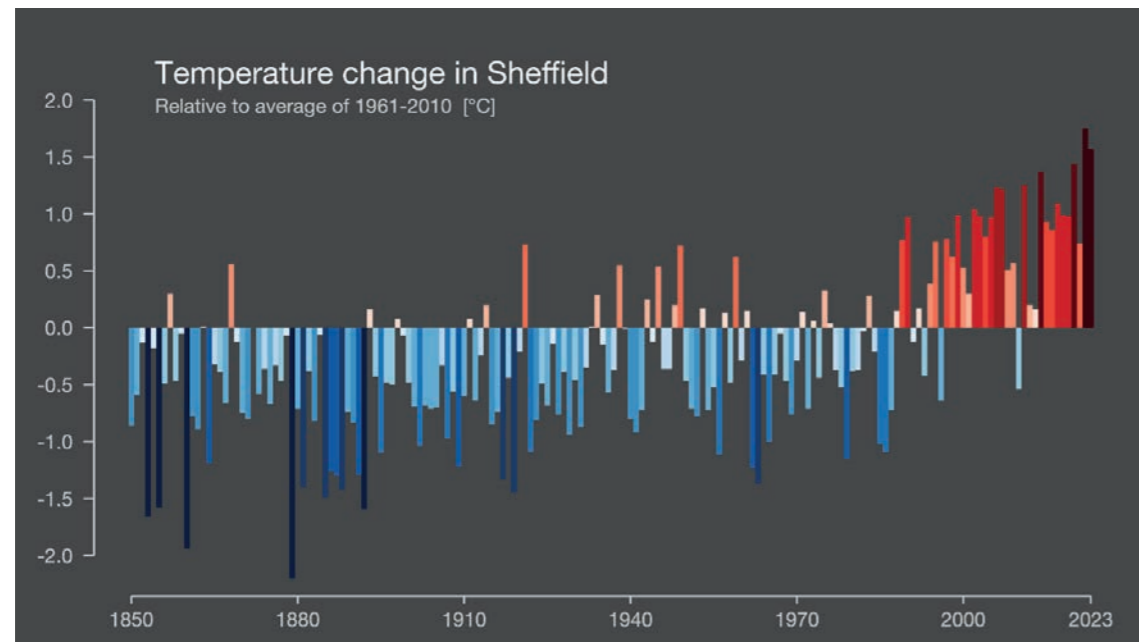


Figure 3. Changes in annual temperatures in Sheffield (our nearest weather station). Graphics and lead scientist: Ed Hawkins, National Centre for Atmospheric Science, University of Reading., National Centre for Atmospheric Science, UoR. Data: Berkeley Earth & ERA5-Land, NOAA, UK Met Office, MeteoSwiss, DWD, SMHI, UoR & ZAMG

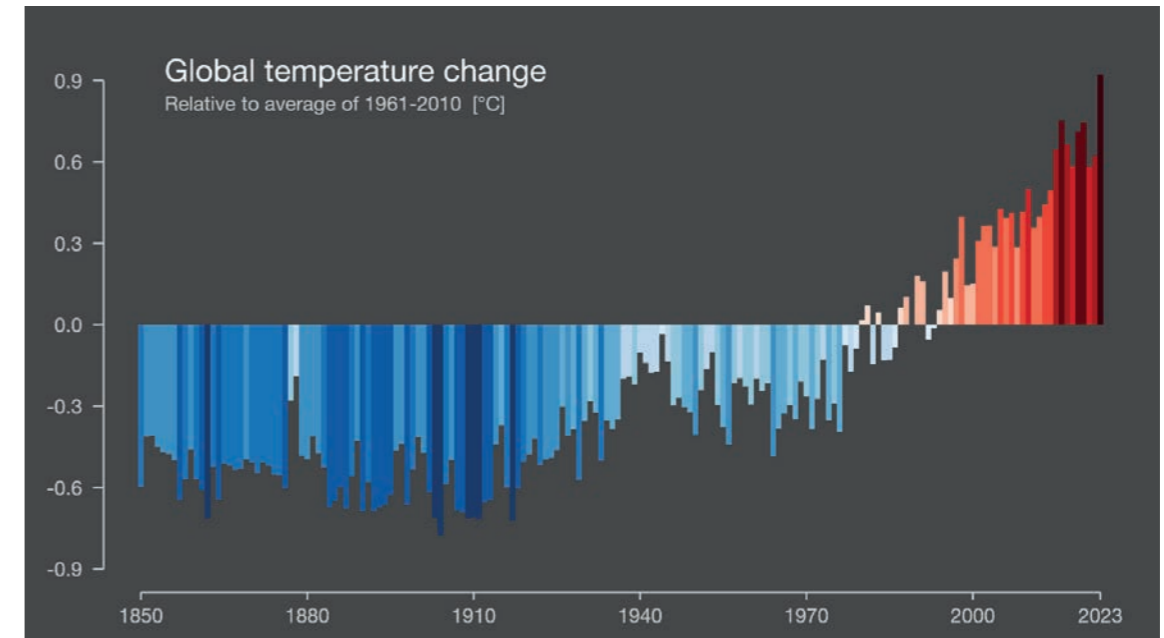


Figure 4. Changes in annual temperatures globally. Graphics and lead scientist: Ed Hawkins, National Centre for Atmospheric Science, University of Reading., National Centre for Atmospheric Science, UoR. Data: Berkeley Earth & ERA5-Land, NOAA, UK Met Office, MeteoSwiss, DWD, SMHI, UoR & ZAMG

At a national level, the Met Office produces an annual publication assessing the UK climate. The State of the UK Climate 2022 Report (published in July 2023) highlights that 2022 was a year of extremes and the report shows how in 2022, the UK experienced the knock-on effect of increasing global temperatures. Met office projections show that without rapid collaborative efforts to reduce emissions on a global scale, the recent changes observed in UK climate are set to increase.

Chesterfield is already experiencing the impacts of climate change. We have recently seen record-breaking summer temperatures as well as severe flooding in autumn 2023.

While flooding and heatwaves are not unfamiliar to us, they are becoming more common and extreme, and councils play an important role in helping people and places prepare for the risks and impacts of climate change in our cities, communities, infrastructure, economy, and ecosystems. It is anticipated that adaptation activity will therefore become increasingly important.



5 Highlights of activities during 2023/24

During 2023/24, we have been implementing the first delivery plan under the new Climate Change Strategy. There were 43 actions within the Climate Change Delivery Plan 2024 to 2025, including actions which focused on the 2030 target (carbon neutral organisation), actions that focused on the 2050 target (carbon neutral borough) and actions which contribute to both. These were grouped by themes as described in our Climate Change Strategy:

1. Buildings and energy use
2. Travel
3. Green space, land use and offsetting
4. Communications, engagement and training
5. Data, monitoring, and corporate activity
6. Council influence and partnership activity

Significant progress has been made in 2023/24, with thirty-one (67%) of the actions delivered in full by year end. Good progress has been made on a further twelve (26%) with measures in place to ensure delivery during 2024/25.

Three actions were not completed as planned during 2023/24 and have been used to inform future delivery plans. There are a range of reasons for this including changing needs or developments in activities and opportunities, limitations on capacity or budgets, and changes in government policy.

Buildings and energy use

With most of our operational buildings being reliant on gas for heating, decarbonising these assets is a critical factor to enable us to reach our 2030 target. Also in this theme are wider 2050-related activities, such as decarbonising our council housing stock.

Key highlights of our work last year include:

- We own a large number of operational buildings including leisure centres, offices, and cultural spaces. We have developed a new Asset Management Strategy Delivery Plan to guide how we manage our operational and commercial buildings. The plan identifies priority buildings for decarbonisation and energy generation activity. This programme of work will have a significant impact on how we manage our buildings with respect to energy and climate adaptations.
- We have reshaped our property and technical services team to provide additional capacity and expertise to progress our plans to decarbonise our properties and generate renewable energy.
- Stock condition surveys, decarbonisation, and energy generation studies have been completed on a number of our buildings during the last year. Work is progressing to develop a heat decarbonisation plan for the Healthy Living Centre, and to complete this activity at the priorities identified in the Asset Management Plan.
- Two studies have been completed to explore the feasibility of installing solar canopies to produce electricity at Queen's Park Sports Centre and the Northern Gateway Enterprise Centre which are currently under consideration.
- We have developed plans to upgrade the heating and insulation at our sheltered accommodation at Brocklehurst Court which will reduce emissions and improve the quality of housing for our tenants.



- We have carried out significant improvements to our council homes this year to enhance the climate performance of these properties as well as making them warmer and reducing energy bills for our tenants. This has included:
 - Investing £1.586m to replace windows and doors, including replacement of 215 doors, windows for 39 houses, and windows for 74 bungalows.
 - Upgrading and renewing roofs on 84 properties at a cost of £657,000.
 - Investing £1.61m to install 295 heating upgrades.
- We have committed to exceeding building regulations and achieving an EPC rating of A in all new-build council housing, and there are currently 40 new-build council homes either already on site or in planning.
- We have successfully distributed around £770,000 of funding to support upgrades to the least efficient private homes in the borough. Work to date has resulted in an estimated saving of around 84,226 kWh of mains gas, and 8,742 kWh of electricity. We estimate that this has resulted in a reduction in emissions of around 17 tonnes of CO₂e (includes Home Upgrade Grant 1 and Local Authority Delivery 1&2 funding schemes).
- We are currently reviewing the Local Plan, which guides planning decisions in the borough. This will include the introduction of climate change measures as a core goal. A project with the University of Sheffield to review environmental standards in the existing Local Plan has been completed and included a range of environmental recommendations.

- As part of our programme of improving borough-wide retrofit and green skills, we are leading the development of the Construction Skills Hub which is an on-site construction training facility situated at the heart of a live construction site, with funding provided through the Staveley Town Deal.
- We are the lead authority for UK Shared Prosperity funded activity in Chesterfield. We are coordinating a number of UKSPF projects that support climate change activity, including a Green Skills project which Chesterfield College are delivering. This project focusses on retrofit and green skills in the construction sector and is an upskilling programme around sustainable modern methods of construction, alternative fuels for transport, and sustainable energy systems. Programmes are offered for any employed person that needs to retrain. Every course has a progression route identified for next steps, and the college is working with local expert delivery partners (eg. Solar thermal energy and heat pump fitters). Programmes are being delivered at levels 1-3. The learning is also being mainstreamed into the college curriculum due to the demand from employers and issues with recruitment.

Case study

Brocklehurst Court

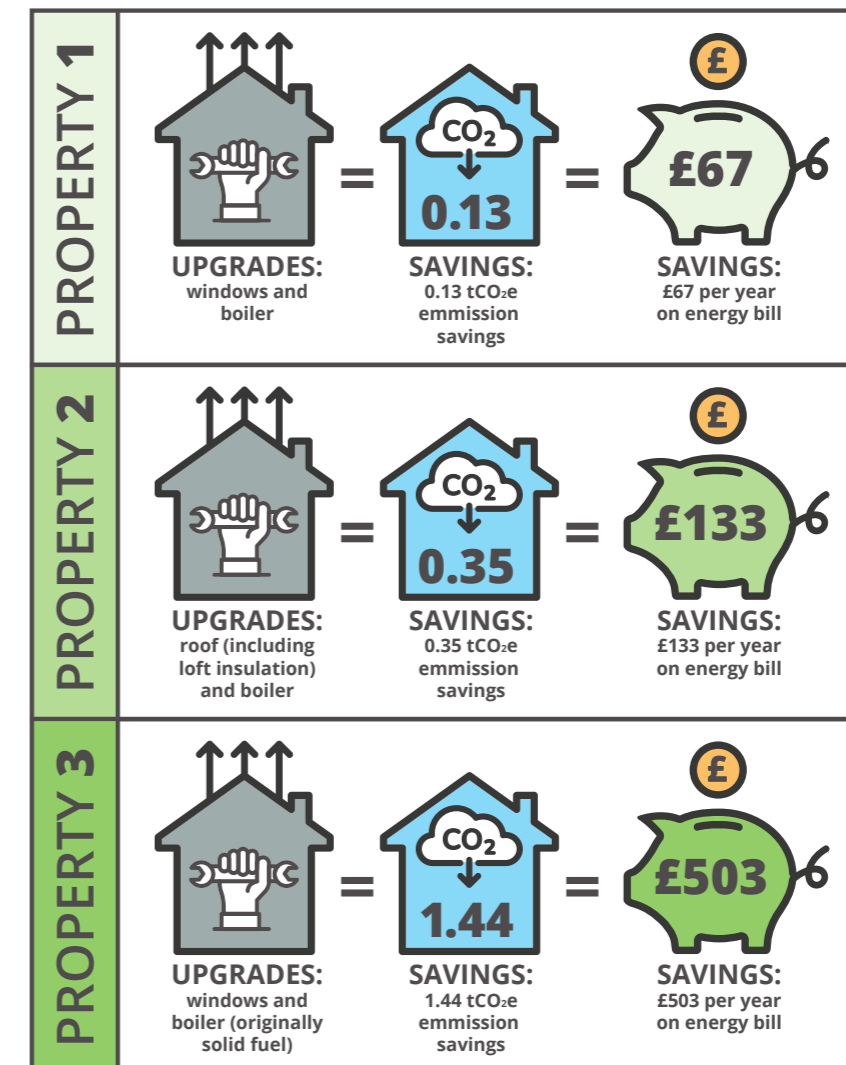
Brocklehurst Court is leading the way on decarbonised shared domestic heating. We have conducted a detailed feasibility study in preparation for the installation of a low carbon heat source and upgraded insulation for the site. This will reduce emissions and improve the quality of housing. Works to implement the recommendations of the study are due to begin in 2024/25 and will pave the way for works to the remaining five council sites with shared domestic heating to be decarbonised by 2030.



Case study

Impact of Council Home improvements on tenant energy bills and emissions

The diagrams below show some examples of upgrades delivered to 3 Council homes, and the impact that the upgrades have had on the emissions and energy bills in those homes.





Case study

Newland Dale – award winning refurbishment

The flats on Newland Dale have benefitted from award winning modernisation works. Newland Dale won Refurbishment Project of the Year from the Building Communities Awards.

Alongside improved rendering to the outside of the buildings – bringing a fresh and modern look and feel to the area - several improvements have been made to the properties to ensure they are more energy efficient. This included upgrading and fully re-insulating the roofing as well as replacing the windows throughout.

These improvements will reduce the climate impact of the properties, while also helping to reduce fuel bills for our tenants.

Case study

Developing retrofit skills

A programme of retrofit training for our in-house repairs staff will be developed alongside the overall stock decarbonisation strategy. In relation to borough-wide retrofit and green skills, we are leading the development of the Construction Skills Hub. The Hub is an on-site construction training facility situated on a live construction site, funded through the Staveley Town Deal.

The first cohort of learners started in 2023, based at Chesterfield College. Initially the Construction Skills Hub is providing training in site and bench joinery, brickwork, groundworks and electrical installation but in time the offer will expand to include training in retrofit and green technologies.

We are coordinating a number of UKSPF projects in supporting retrofit and green skills including: the Future Skills Development Fund and a Green digital retrofit skills programme. We are also supporting a regional bid to the Local Area Retrofit Accelerator pilot programme.



Travel highlights

Our fleet includes vehicles and machinery used to repair and maintain our council homes and the green spaces in the borough. These are traditionally petrol and diesel fuelled, but we are taking steps to move to alternative fuel where possible.

Key highlights of our work last year include:

- In July 2023, we approved a fleet decarbonisation plan to enable us to move away from petrol and diesel fuel.
- 34 electric vehicles have already been ordered and will be in use by summer 2024, and the remaining vehicles will be replaced by 2030. Several trials of electric vehicles have also taken place and a report on the trial-use of hydrotreated vegetable oil (HVO) in our largest vehicle (a road sweeper) is due in the autumn. This will help us to consider the use of hydrotreated vegetable oil on a wider scale.
- An additional 17 charging points have been installed at our Stonegravels Depot bringing the total of dedicated charging points up to 21. This is a necessary step to allow us to manage greater numbers of electric vehicles and work towards decarbonisation of our vehicle fleet.
- A parking study was completed during 23/24 to consider climate change opportunities across the car parking estate including greening opportunities, installing solar panels on car parking areas, and assessing the future need for EV charging points in our car parks. As a result of the findings from this study, two further pieces of work have been commissioned to explore the feasibility of installing solar canopies to produce electricity at Queen's Park Sports Centre and the Northern Gateway Enterprise Centre.
- We have engaged in a wider piece of work led by Derbyshire County Council to assess the need and capacity for electric vehicle charging points to be installed at sites within the borough. Funding has been

secured through the Local Electric Vehicle Infrastructure (LEVI) scheme to provide new EV charging infrastructure through a range of types and locations across Chesterfield in 2024 and 2025.

- As part of the Staveley Town Deal programme, Rural Action Derbyshire are delivering a Wheels to Work project in Staveley to ensure that local people can access employment and training opportunities by providing them with transport – either an e-moped or an e-bike.

Case Study

Trial of a removal battery nano car

Employees in our technical teams and environmental services have recently trialled a nano car to be considered for pool car use. This electric car has a battery that can be removed from the vehicle and taken into the home or place of work to charge using a standard household socket. Our officers were given the opportunity to test drive the vehicle and see if it could replace the small panel vans currently used by technical team leaders. While the trial was promising the vehicle did not meet the needs of our officers. However, we are continuing to search for small environmentally friendly vehicles that will reduce the impact of our officers travelling around the borough.



Green space, land use and offsetting highlights

Green spaces provide a wide range of benefits to local residents. In particular, areas with trees have been shown to reduce stress, improve our quality of life, and cut down on air and noise pollution, and provide shade. As well as these benefits, trees are a reliable method of storing carbon and improving local biodiversity.

While direct emissions reduction measures are being prioritised, given the hard-to-treat nature of some emissions, such as those from larger vehicles or listed buildings, it is also likely that despite best efforts, there will be some “residual” or leftover emissions in 2030. This theme focusses on maximising opportunities to tackle climate change through our green spaces and land use, as well as developing an offsetting plan to tackle any residual emissions, and wider activities such as bio-diversity net gain and nature recovery.

Achievements in this theme include:

- We successfully attracted external funding from several sources to fund tree planting and woodland creation projects in the borough.
- We have carried out an initial assessment of offsetting options, including a feasibility study on the production and use of biochar in the borough which is currently being considered.
- Significant areas of land have been identified for longer term biodiversity improvements under the biodiversity net gain programme. We are currently working on a ‘Plan for Nature’ with Derbyshire Wildlife Trust which will form an action plan for nature recovery at a borough level.

Case study

Tree planting

A range of external funding was secured to deliver tree planting during 23/24 including Coronation Living Heritage Fund, Urban Tree Challenge Fund, and UK Shared Prosperity funding. In total we have planted around 5360 trees as part of community orchard programmes, royal commemorative trees, and two Miyawaki woodlands.

40 heavy standard trees have been planted at Highfield Park as part of the Urban Tree Challenge Fund. Heavy standard trees are supplied as larger trees, usually being around four meters tall, which is more than double the size of trees we usually plant. These trees create a greater impact because of their size and will form a tree-lined avenue through the park. Further planting will take place in Highfield Park over the next two years as part of this project.

What is a “Miyawaki” Woodland?

Miyawaki is a Japanese planting style where small trees are planted very close together. This helps the trees grow more quickly and when fully grown creates micro-woodlands that will help boost biodiversity and create new habitats for wildlife.

We look forward to seeing it grow!



Communication, engagement, and training highlights

It has always been clear that we cannot decarbonise the borough without widespread support from our communities and partners. Activities in this theme centre around engagement, training and promotion of climate change activities.

Achievements in the theme include:

- Initiating a Chesterfield Climate Change Forum to engage more effectively with our partners in the wider community.
- Continuation of existing media campaigns - our Climate Action Now (CAN) campaign has continued this year with activities including the quarterly climate change e-newsletter containing information about local climate activity as well as what the council is doing. The newsletter is sent to more than 4000 subscribers.
- Our magazine for residents 'Your Chesterfield' has gone digital, by no longer sending this to every household in the borough it has led to a reduction in emissions through postage and printing. All editions of Your Chesterfield have included a double page feature on climate change.
- A series of mini campaigns have taken place, including an initiative to promote active and alternative travel.
- As part of the UKSPF programme, we are providing development support and grant funding for local community groups. The grant fund includes both UKSPF funding, and Community Infrastructure Levy neighbourhoods funding. Climate change is a key consideration in the Community Grants Fund assessment criteria, and the climate team also offer guidance and support to applicants about how they can develop climate friendly projects. During 2023-24, around £120,000 has been awarded to local groups via this fund, including to Transition Chesterfield's Eco Hub.



- Due to popular demand, we held our first community group climate change training workshops in March. 11 members of local community groups took part in two Fresk workshops delivered by our climate change team to learn about the causes and consequences of climate change. They then got their heads together to discuss ways they can help tackle climate change and adapt to a changing climate.
- We have continued delivering the training that was developed in collaboration with partners from the Local Authority Energy Partnership (LAEP) to our staff and councillors. We have adopted a two-phase climate change training programme which incorporates elements from both the Carbon Literacy course and Climate Fresk exercise. Feedback from the training sessions over the last year has been very positive, including:

"Lots of information and explanation on cause and effect of climate change. Really knowledgeable presenter."

"The climate Fresk gave a thorough explanation for the reasons, causes and consequences of how we are in this situation."



Case Study: Climate Change Forum

Since the council facilitated the launch of the Chesterfield Climate Change Forum in September 2023, forum members have taken part in a climate change training workshop, carried out group activities to feedback on council plans and develop ideas for future activity both for the council and wider borough. The group have developed their own action plan for next year, including an engagement programme, training and promoting upcoming local climate activity. We hope to see the Climate Change Forum grow even further as we continue to gain new members with a range of backgrounds and experience.



Case Study: Hope House

Hope House were also awarded £6000 of Community Grants funding for the installation of upgraded windows to improve the energy efficiency of the building. Just three weeks after the replacement windows, residents were reporting that it was much warmer. An added bonus – the upgraded windows have reduced noise pollution, leading to better sleep patterns for residents!

Case Study: Eco-hub

Community Grants Funding was awarded to Transition Chesterfield's Eco Hub project, with a full programme of events delivered at the Eco Hub on Fridays since it opened in September 2023. Hard work from volunteers giving up a combined total of over 500 hours of volunteer time, and 31 sessions delivered, has led to the project's huge success in raising the profile of environmental issues in the area.



As part of the project, the Eco Hub ran a series of Climate Conversations events aimed at engaging the community on climate action and steps which individual households can take. Groups of students from Chesterfield College attended some of these events, which enabled intergenerational discussions on the issue of climate change and its impact on Chesterfield. Transition Chesterfield have also held sessions on woodland restoration systems and river pollution issues all of which have increased awareness of the protection of the environment. The most popular event was a workshop on Natural Flood Defences with Derbyshire Wildlife Trust and Don Catchment Rivers Trust. This increased awareness of flood management risks and opportunities, particularly relevant after the Storm Babet flooding in October 2023.

Almost 400 residents have engaged with the Eco Hub during this time with a wide range of partners involved too, including Derbyshire Wildlife Trust, Don Catchment Rivers Trust and Links CVS to name a few. At four Climate Conversations events held as part of the Eco Hub project, participants were asked to rate how confident they felt on a scale of 1-10 talking about climate change (1= not at all confident, 10= highly confident). The average score across sessions was 5.9 at the beginning of the session and 7.8 at the end of the sessions.

5. Data monitoring and corporate activity highlights

Council emissions 23/24

During 2023/24 financial year, emissions from our electricity use has fallen by around 26% since the baseline year. Emissions from gas have fallen by around 12% over the same period. Emissions from road fuels have remained largely static (a 2% rise on the baseline year) but work is underway to decarbonise our vehicle fleet which should begin to have an impact in the 24/25 financial year. Electricity use is likely to rise in future years as we move away from reliance on fossil fuels for transport and heating. This trend reinforces the need to invest in low carbon electricity projects to support our own use and reduce our exposure to volatile energy markets.

Emissions comparison with baseline year

	Baseline year (2019/20) emissions (tCO ₂ e)	2023/24 emissions (tCO ₂ e)	Change on baseline emissions (%)
Electricity	1,264.53	938.96	-25.7
Gas	2,065.50	1,824.48	-11.7
Road fuel	558.62	569.17	+1.9

The buildings with the largest emissions in 23/24 were the two sports centres, the crematorium (operated with partner organisations), the Town Hall, and the Winding Wheel Theatre.

Top 5 Council-owned emitters for 23/24

Site	Electricity Consumption (kWh)	Gas Consumption (kWh)	GHG emission combined (tCO ₂ e)
Queens Park Leisure Centre	721,450	1,510,369	426
Healthy Living Centre	727,888	1,322,057	393
Crematorium	119,366	1,704,829	337
Town Hall	281,900	1,112,863	262
Winding Wheel	206,045	680,784	167
All council buildings	2,056,649	6,330,902	1,584

Both sports centres and the Town Hall have been prioritised for action under the new asset management plan which will include specification and delivery of new decarbonisation work. The bereavement service is currently working on a plan to open a new natural burial site within the borough which will offer an additional low carbon alternative to cremation.

Council influence and partnership activity highlights

Partnership working with other councils, organisations, and businesses to establish solutions to the issues that many of us are facing is essential to delivering action on climate change. This theme includes climate-focussed partnerships such as the Local Authorities Energy Partnership, Local Government Association networks, and local business and community groups. We also have some influence where we have contracts with suppliers who provide a range of services on our behalf, e.g. construction and waste collection.

We continue to engage with a range of different partners including the Local Authorities Energy Partnership (LAEP). The LAEP partnership provides information, co-ordination, support and training on a range of climate and energy topics, and encourages collaboration, learning and sharing of good practice.

In April, the LAEP supported a successful bid to Midlands Net Zero Hub for retrofit demonstrator funding by our local energy agencies Nottingham Energy Partnership (NEP) and Marches Energy Agency (MEA). Aimed at owner occupiers who are 'able and willing to pay', the proposal was led by NEP and showed the way forward for scaling up retrofit for hard-to-treat properties which are energy inefficient, off the gas grid, in conservation areas or a combination of these factors.

As a result, the Home Energy Advice Team led a community event at the Assembly Rooms in Chesterfield in February, supported by Transition Chesterfield and Derbyshire County Council. Local residents heard about the step-by-step energy plans and educational resources available. Everyone had the chance to take part in a carousel of demonstrations and information sessions from local providers showcasing insulation, heat pumps and solar energy. Lots of questions were asked from householders keen to act. We are looking forward to the Heat Hub sharing case studies with us, as they pave the way for decarbonisation across the East Midlands.



Case Study: Staveley Town Deal

Inclusive Growth: Wheels to Work

Run by Rural Action Derbyshire, Wheels to Work in Staveley is ensuring that local people can access employment and training opportunities by providing them with transport – either an e-moped or an e-bike.

Staveley Canal Restoration

This project will rebuild the historic Staveley Puddlebank and restore a length of canal channel. 3km of towpath will be improved for cycling, equestrian and walking use, including the construction of a new bridge on the Trans Pennine Trail.

Natural Play

Staveley 21 has engaged with Staveley Junior School pupils to look at active play, and this site visit and activity has informed the recent designs for the Market Place.



Education Links

The climate change team visited Chesterfield College for its Sustainability Day in March to talk to learners about their college projects and ways to reduce your own carbon footprint. We spoke to different groups throughout the day who had some great ideas. Here's a few of them:



We continue to engage with schools where possible, including delivering primary education talks on climate change and other related topics.

Councillor Martin Stone visited Westfield Primary in March to give a talk about waste and waste management in Chesterfield. The children learnt about the challenges in the borough and made suggestions for ways to improve the environment.

Wider partnerships

The Derby and Derbyshire Strategic Leadership Board has committed to continue the collaborative working (previously Vision Derbyshire) with a chief executive led climate change working group.

We continue to engage with a range of different partners, and are maintaining good relationships with the Local Authority Energy Partnership (LAEP), Association for Public Service Excellence (APSE) and the Collective for Climate Action (CFCA), including contributing to the LAEP with the Woodland Area Calculator, and joining the Local Area Retrofit Accelerator bid.

We have joined up with other councils and partners to bid for the region to be one of three Local Area Retrofit Accelerator (LARA) projects. If successful, the LARA project will co-develop a retrofit strategy with local stakeholders that can drive forward action and secure funding, taking a whole system approach for the region.

The East Midlands Chamber of Commerce is delivering the UKSPF funded Decarbonise project on our behalf. The programme which launched in December 2023, includes energy audits and grants of up to £20,000. Two businesses have already received energy audits between January 2024 and March 2024, and there are a further 10 businesses in the pipeline to receive energy audits.





6 Looking forward: the coming year

Having approved a Delivery Plan for 2024/25, services across the council are already working hard on the actions. The new plan contains 12 priorities across the six themes outlined in the Climate Change Strategy. Some of the highlights we have already begun working on are:

- We have prioritised five buildings for stock condition and decarbonisation surveys in the first half of the year. These surveys will also consider opportunities for renewable energy generation.
- Chesterfield Climate Change Forum have developed their own action plan for the year including training, events and networking.
- A number of climate related projects have been awarded Community Grants Funding, including Cycle Chesterfield, Ashgate Heritage Arts and Inclusive Pedals. We look forward to seeing their projects develop throughout the coming year.
- We are expecting the arrival of 34 new electric vehicles with Climate Action Now livery.
- A grassland management policy has been approved which sets out how we will manage grasslands to increase biodiversity, seek out methods to maximise carbon sequestration and reduce the carbon footprint of maintenance.
- Increasing electric vehicle charge points through partnership work with Derbyshire County Council on the LEVI project, as well as additional rapid charging hubs across the town centre.

Contact information

phone

01246 345 345

text only

07960 910 264*

* Our text number is monitored during opening hours and doesn't accept voice messages.

by post

Chesterfield Borough Council
Town Hall
Rose Hill
Chesterfield
S40 1LP

Contact our climate change team by email

climate@chesterfield.gov.uk

For all media enquiries please contact the public relations team on 01246 345250 or email public.relations@chesterfield.gov.uk



CHESTERFIELD
BOROUGH COUNCIL