

Your Chesterfield

Putting our communities first



Meet the residents of Parkside. Pages 6 to 7

Let us improve your home. Pages 10 to 11



Welcome

Next month I pass the baton of council leader on to Councillor Tricia Gilby, the first woman to hold this post in Chesterfield. She is an excellent councillor, who will provide the strong leadership the council and borough needs.



The past six years have been the most challenging in our history as we've dealt with budget cuts on a scale unimaginable before. But, through hard work and effort, Chesterfield is in a better place, and doing well compared to towns of a similar size.

That doesn't mean everything is perfect but a continued focus on the economy has enabled Chesterfield to take advantage of growth opportunities. Key to that has been the millions of pounds of funding to enable projects like Waterside, the Northern Gateway and Peak Resort become a reality.

But that's only part of what we do. We are now halfway through our four-year Council Plan.

On pages four and five you can see the excellent progress being made and the areas where more effort is needed.

Finally I want to thank the councillors, of all parties, and the council officers I have worked with over the years. It's not easy working for a council. You get little thanks when things go well and certainly know about it when something isn't! But we are all united by our passion to do the best for you, the residents of Chesterfield. I hope you will continue to support them, as I will from the back benches.

Councillor John Burrows
Leader of Chesterfield Borough Council

Are we accessible to you?

کیا ہم تک آپ کی رسائی ہے؟ اگر نہیں تو ہمیں بتائیے!

你可覺得易於與我們接觸？若不的話，請提出要求。

Czy łatwo jest skontaktować się z nami? Jeżeli nie, powiedz nam o tym!

Siamo accessibili nei vostri riguardi? In caso contrario rivolgetevi a noi!

We want everyone to be able to read our publications.

We aim to provide what you need to be able to understand our information or talk or write to us.

On request we will provide free of charge:

- Language interpreters, including for sign language
- Translation of written material into other languages
- Material in braille, large print and recorded onto CD.

Please contact us:

General enquiries:
01246 345345

Text:
07960 910264

Website:
www.chesterfield.gov.uk

Email:
info@chesterfield.gov.uk

Get in touch

Published by
Chesterfield Borough
Council, Town Hall, Rose Hill,
Chesterfield, Derbyshire,
S40 1LP

Web: www.chesterfield.gov.uk
Email: info@chesterfield.gov.uk
Telephone: (01246) 345345

Get the latest news

Follow us on:

Twitter @ChesterfieldBC

Like us on Facebook -
ChesterfieldBoroughCouncil

See our videos on YouTube -
search for Chesterfield Borough
Council's channel

Delivering essential services

Chesterfield Borough Council's portion of your Council Tax bill is to rise by 6p a week for most tax payers in the borough.

It comes as new figures show the council now receives less than half the grants it did from central Government before the cuts began in 2010/11.

Most households in Chesterfield borough are in a band A property which will see bills go from £99.93 to £103.26 a year.

Properties in band D will see a 9p a week increase, with bills rising from £149.89 to £154.89.

Council Tax continues to be an important source of income which the council uses to provide more than 50 different services for residents ranging from rubbish collection through to parks and open spaces, and from street cleaning through to sports centres (see the back page for full list).

During 2017/18 the council has to make another £209,000 of reductions, which brings the total amount of cuts since 2010/11 to £5.186 million.

Where your Council Tax goes:

Although Chesterfield Borough Council collects Council Tax from residents, we keep only 10 per cent to pay for services we provide, including: bin collections, street cleaning, sports and park facilities, regeneration, theatres and tourism.

- Derbyshire County Council receives 74 per cent of the Council Tax you pay for services including education, adult care, children and young adults care, and roads.
- Derbyshire Constabulary receives 11 per cent.

- Derbyshire Fire and Rescue receives five per cent.

Derbyshire County Council has decided to raise its share of the Council Tax bill by 3.99 per cent, with two per cent of this increase being spent specifically on the adult social care services they provide.

Derbyshire Constabulary and Derbyshire Fire and Rescue are raising their portions of Council Tax by 1.99 and 1.98 per cent respectively.

You will receive your Council Tax bills – which combine all these services together into one charge – in the post along with your free residents' parking pass (see page 15 for more details).



Putting our communities first

Our Council Plan sets out what we want to achieve and how we are going to do it.

In 2015/16 councillors agreed a four-year plan. As we are now halfway through that period we have reviewed progress so far and where we need to concentrate our efforts to achieve the remaining objectives.

Progress so far

We have:

- Seen the number of businesses in the borough increase from 2,910 in October 2014 to 3,275 by October 2016 – a rise of 12.5 per cent compared to a national increase of 8.4 per cent.
- Seen unemployment fall from three per cent in November 2013 to 1.8 per cent in November 2016, below the national average. Youth unemployment (18 to 24-year-olds) fell from eight per cent to 3.8 per cent in the same period.
- Seen ground preparation work on the Chesterfield Waterside development completed. Work to construct the first phase of the canal basin will begin soon.
- Launched the Apprentice Town initiative, which has seen more than 5,000 apprentices studying with Chesterfield College.
- Seen 56 Chesterfield businesses agree deals worth a total of £433,034 with the Sheffield City Region Skills Bank that will help 891 employees improve their skills or training so they can progress their careers.
- Seen visitor numbers to Chesterfield increase by 2.6 per cent between 2014/15 and 2015/16. These 3.5 million visitors generated £164 million for the borough's economy and supported 2,116 full-time equivalent jobs.
- Launched our new website to provide a better user experience, particularly for people viewing on mobile phones and tablets.
- Invested £32 million in 2015/16 and £29 million in 2016/17 to bring all 9,400 council homes up to the Decent Homes Standard, which ensures they have modern facilities, are warm and in a good state of repair.
- Provided £200,000 of assistance to vulnerable homeowners so they can stay in their homes and live independently.
- Achieved Green Flag status at Queen's Park, Eastwood Park, Holmebrook Valley Park, Poolsbrook Country Park and the Chesterfield and District Crematorium, showing they are well maintained and have good facilities.
- Improved several parks and open spaces including a £350,000 sports pavilion at Eastwood Park, a sensory garden and café terrace at Holmebrook Valley Park, and refurbished children's play areas at five local parks.
- Achieved a gold award in the small cities category of the East Midlands In Bloom Awards.
- Improved recycling rates from 41 per cent to 45 per cent.
- Opened the £11.25 million Queen's Park Sports Centre, which has seen memberships increase from 1,927 to 3,483 and the number of people taking part in activities rise, particularly for swimming lessons, gymnastics and trampolining.
- Given opportunities for more than 17,000 people of all ages to take part in activities, including bulb and tree planting, dry stone walling and litter picking.
- Spent £266,160 a year funding key advice agencies, including the Citizens Advice Bureau, Derbyshire Unemployed Workers Centre and Derbyshire Law Centre, so they can provide impartial community legal services, employment, sickness, debt and benefits advice for residents.

- Enabled more than 200 of our staff to work more efficiently out of the office using tablets or laptops so they can complete paperwork on site rather than return to the office.
- Started work on a project to refurbish the Town Hall building. This will enable more staff to work from one building, enable the building to be hired out for conferences or events and create space that can be let to other public sector organisations to generate income to support frontline services.

Our focus for 2017/18 is to:

- Continue the Northern Gateway redevelopment by completing the refurbishment of Saltergate multi-storey car park, carrying out a public consultation on environmental improvements in Elder Way and supporting the development, by Jomast, of the former Co-op building into restaurants, a hotel and gym.
- Give local people and businesses clear advice and support about the range of skills and training available to help people get new, better paid jobs.
- Play a lead role in the Healthy High Streets initiative that is working with major businesses including Marks and Spencer and Boots to come up with initiatives to boost trade in the town centre.
- Enable customers to access more of our services through our website and also improve the content so it is easier to read and to find the information needed.
- Work with partners to encourage people living in the seven most deprived neighbourhoods in the borough to lead more active lifestyles, taking part in sport or physical activities.
- Develop new commercial opportunities to generate income, starting with building services (see page 10) and catering, which involves opening a cafe in the market hall before expanding into other ventures. Money generated will be used to support frontline services.

Our Council Plan has a vision of 'putting our communities first'.

To deliver this we have three objectives to:

- Make Chesterfield a thriving borough
- Improve the quality of life for local people
- Provide value for money services

To see a full list of all that has been done to deliver the plan – and what more needs to be – visit www.chesterfield.gov.uk/councilplan

No place like home...

Council tenant Margaret Cotterill is thrilled with her new home: "It's beautiful, everything is so easily accessible; I have an open plan kitchen, dining room and living room and a lovely big bedroom with an en-suite bathroom."

Margaret is one of the residents of the Parkside older persons' accommodation in Stand Road. She and fellow residents moved into the new building last summer, which replaced the former sheltered housing complex which was built in the 1970s and closed in 2014.

Margaret says: "It's funny because I never knew it was here until I saw a photo."

"I'd had my name down for a bungalow because I was finding it difficult to go up and down the stairs in my house and, out of the blue, I had a phone call from the On the Move team to ask if I would be interested in taking a flat here."

"I came to have a look round and it was on the money – I'd said yes by tea time."

The new Parkside cost £3 million to build and has 22 two-bedroomed flats with kitchen, dining and lounge areas and bathrooms specially adapted for people who use a wheelchair or walker.

Each flat also has a balcony, Juliette balcony or bay window.

Margaret is pleased with the views from her flat: "It's wonderful, I overlook the bowling green so I'll be able to watch the bowls when the season starts, and I can also look out onto the courtyard."

Fellow resident, Barbara Eyre, is equally pleased with her new home.



"It really is very nice. I lost my husband last summer and coming to live here really has been a God send because it's good to have friends around."

Margaret agrees: "Yes, we're all independent and we come and go as we please but it's good to have company: we have coffee mornings, bingo and chair based exercises and we also meet in the lounge just to chat, it's wonderful."

Barbara adds: "Yes I enjoy the activities very much and we also go out for a meal every so often to different places, which is nice."

"It's good to be together but you're able to be on your own if you want. I'd advise anyone to come in here or a place like it because you don't have to be lonely; it's easy to make friends."

She is also pleased with the view from her flat: "Yes, it looks out onto Stand Road Park. I wanted that. We used to come to the park as children so it's great to be able to see it from my window."

As well as overlooking the park, Parkside also has a garden with a greenhouse where residents can grow plants and a courtyard with a gazebo and fountain allowing them to sit outside in the warmer weather.

Parkside was officially opened in November by Mrs Carol McManus – the building is dedicated to the memory of her late husband, Alderman Jim McManus, who died in August 2015. Jim was the council's executive member for housing from 2011 until stepping down at the council elections in May 2015.

It is also dedicated to Andy Simpson, who also died in 2015 and was the council's head of housing from 1996 to 2013. Both men were heavily involved with the project.

For more information about older persons' accommodation in the borough, visit www.onthemove-cbc.org.uk or call the team at On the Move on (01246) 345700.



Bank holiday bin changes

Chesterfield residents will see changes to bin collections over the forthcoming bank holidays.

- Bins due for collection on Good Friday, 14 April, will be collected as usual
- Bins due for collection on Easter Monday, 17 April, will be collected on Saturday 15 April
- Bins due for collection on the May Day bank holiday, Monday 1 May, will be collected on Saturday 29 April
- Bins due for collection on the Spring Bank Holiday, Monday 29 May will be collected on Saturday 27 May.

This applies to black, blue and green bins.

Please remember, we cannot accept any side waste with your black bin but we can accept extra recycling with your blue bin. If you have any small electrical items, such as alarm clocks, phones, radios or toasters, you can leave these on top of your blue bin. Our target is to recycle 50 per cent of all waste by 2020.

Please make sure your bin is out by 7am on collection day as crews may be out before the usual collection times.

You can check when your bins are due to be collected at any time by visiting www.chesterfield.gov.uk/bindates.

YOUR VOTE MATTERS

MAKE SURE YOU'RE IN



Make sure you're registered to vote

With elections to Derbyshire County Council taking place on Thursday 4 May, it is important that Chesterfield residents are registered to vote.

If you are already on the electoral register, you don't need to do anything further.

If you're not already registered to vote, the easiest way to register is by visiting www.gov.uk/register-to-vote. The process is simple and should take no longer than five minutes, you will need to know your National Insurance number.

You can also use this website to update any of your personal details such as your name or address.

The last date to register before the elections is Thursday 13 April.

Make sure you check for ID

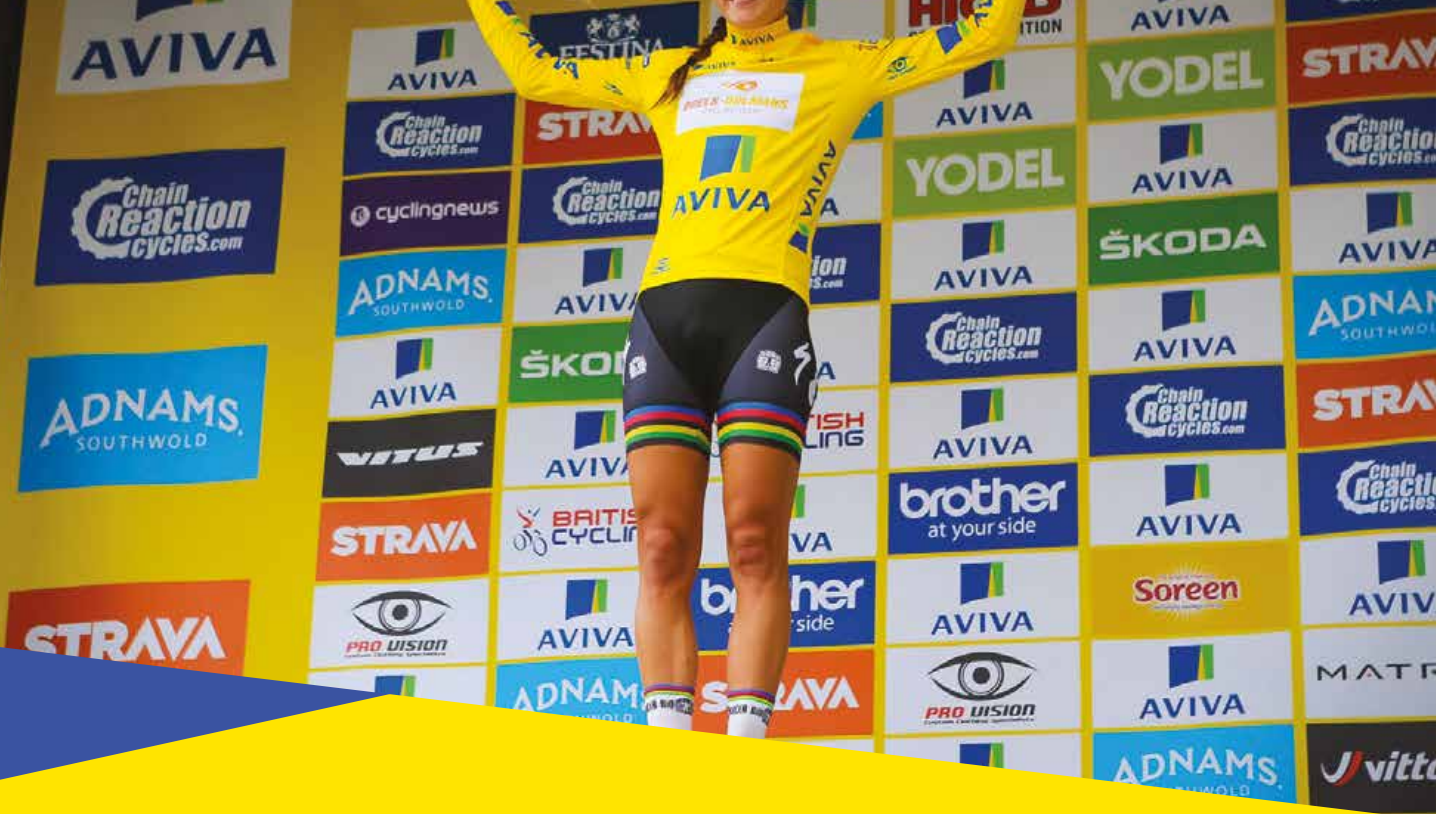
Over the past few months we've been contacted by residents who have received visits from people claiming to be from the council and demanding money.

Council staff will not call on residents unannounced and ask for money.

All council staff should carry ID. Please ask to see the ID.

If you are not sure, contact us on (01246) 345345 to check the caller is genuine.

Any residents who receive a bogus call, should contact Derbyshire Police on 101.



Chesterfield prepares to welcome top women cyclists

Chesterfield is set to welcome the world's top female cyclists as Derbyshire has been chosen to host stage four of The Women's Tour.

Chesterfield has been chosen to host both the start and finish of the prestigious race on Saturday 10 June following the success of last year's event which saw Lizzie Deignan (née Armitstead) win the stage in an exciting finish in Chesterfield town centre before going on to be the competition's overall winner.

Riders will set off outside Chesterfield Town Hall on an 81-mile route which will see them race through the Derbyshire Peak District and pass through Wirksworth, Belper, Bolsover and Staveley before finishing in Chesterfield market place. We're inviting people to join in the fun by waving the cyclists off, cheering them along at the finish and on the route through the borough.

As part of our commitment to improving the health and wellbeing of our communities, we will be hosting activities on the day for families to take part. More details will be announced shortly.

Keep up to date with the latest on the Women's Tour by visiting www.chesterfield.gov.uk/womenstour.

You can't put a price on peace of mind

When you need work carrying out on your home, it can sometimes be difficult to know where to turn.

There are any number of adverts for builders, plumbers or electricians advertising their services and there's almost too much choice.

As Chesterfield's biggest social landlord, we have more than 40 years' experience in providing homes of a good quality to our tenants.

Now we are able to offer a high quality building and home improvement service to people who own their own homes.

Our highly qualified staff, many of whom have been with the council since they were apprentices, can carry out a variety of building work, adaptations and other odd jobs around the home.

We have a growing number of satisfied customers including John Holmes of Elden Street in Clay Cross.

He explains: "We had a room downstairs that we used for storage.

"My wife, Alison, is disabled and has trouble walking so, looking ahead, we decided it would be the ideal place for a downstairs bathroom."

Our workmen converted the room into a full wet room with shower, toilet and wash basin all to the same high standards we use when carrying out adaptations for disabled tenants in the council's own properties.

John and Alison were able to choose all of the materials including the bathroom suite and towel rail from a wide range of choices on offer. John says: "We're really pleased with the work that's been done.

"We went with the council because of how they work: the men carrying out the job have all been very polite and very helpful.

"Because it's quite an old house, there have been a few problems fitting the shower.

"The walls were bare, like a cave and not straight but they have overcome those problems - and they've kept us informed every step of the way, discussing with us how they intended to solve them."

John also says one of the main reasons he chose to approach the council to carry out the work was the peace of mind this offers.

"With the council, you're guaranteed qualified tradesmen, they're not going to be here today, gone tomorrow - if there are any problems, we know we can just give them a ring and we know it can be sorted out."

John and Alison are just two of the satisfied customers we have since we began offering the service last year.

Here are some of the jobs we can help with:

- Kitchen installation
- Bathroom installation
- Extensions
- UPVC window installation
- Roof repairs or replacements
- Adaptation work
- Electrical re-wiring
- Gas servicing and installation
- Gutters, fascias and soffits
- Drainage works
- Garden landscaping
- Ground works including site clearance, ground stabilisation
- General repairs - from a leaking tap to leaking guttering, from a broken door handle to broken windows we can deal with those everyday jobs you need sorting.

For a free, no obligation, quote, call us on 0800 587 5659.

For a full list of the services we offer, visit: www.chesterfield.gov.uk/yourhome.





New Queen's Park Sports Centre encourages people to get active

One of our key priorities is to help increase the health and wellbeing of our communities.

Since the new Queen's Park Sports Centre opened in January 2016, we have seen a huge increase in the number of people taking up sport and leisure activities and leading more active lives with 45 per cent more memberships taken out at our sports centres.

Maddison Taylor, aged 11, started trampolining lessons after the centre opened last year. She says she loves going on the trampoline: "It's really bouncy, you can go really high up in the air.

"The lessons have been really good because you learn how to jump properly. It's important because if you don't know how to do it properly, you could fall and break a bone."

She attends the trampolining academy sessions at the centre each Saturday morning. Since the centre opened, the number of children taking

part in each session has increased by 30 per cent from 84 in December 2015 to 120 in January this year.

Maddison says: "It's great because you get to meet new people and keep fit."

Fellow member, Aaron Bissell, aged ten, agrees.

Aaron feels it is important for people to lead healthier lifestyles: "It's really important to be fit – otherwise you could end up as one of those people who spend all their time sat on the sofa eating popcorn.

"If you're healthier, you can live longer."

He would encourage anyone to take up the sport: "Trampolining is something that anyone can do but it's important to put the effort in.

"You can learn new things such as a half twist [a jump where the trampolinist rotates 180 degrees] or a front drop [a move starting on the feet and ending up on the back]."

You'd be forgiven for thinking that trampolining is only for youngsters; adult classes are also available on a Wednesday evening.

Aaron has this message for anyone, young or old, thinking of signing up: "The instructor is brilliant, you make new friends and have fun at the same time as keeping fit."

Trampolining isn't the only growth area: since the opening of the new centre, we have seen the number of people, both children and adults, having swimming lessons increase by a third from 702 in December 2015 to 1,050 this January.

The biggest area of growth has been gymnastics with a massive 87 per cent increase from 64 to 509 people over the same period. There are so many people wanting to take part in gymnastic sessions that the centre now operates a waiting list.

You can take out an individual membership for Queen's Park Sports Centre and the Healthy Living Centre in Staveley for £26.99 per month.

Family, student and corporate memberships are also available. For more information or to sign up, visit:

www.chesterfield.gov.uk/leisure.

Facilities on offer at Queen's Park Sports Centre

- 96 station gym with brand new equipment
- Pulse Move fitness tracker
- Personalised gym programmes
- Eight lane swimming pool
- Learner pool
- Badminton and table tennis in the sports hall
- Two glass backed squash courts with eight-day advanced online booking
- Group exercise classes each day with eight-day advanced online booking
- Two studios
- Freedom climbing wall
- Free car park

Facilities on offer at the Healthy Living Centre

- 150 station gym with brand new equipment
- Pulse Move fitness tracker
- Personalised gym programme
- Six lane swimming pool
- Group exercise classes each day with eight-day advanced online booking
- Two studios
- Climbing wall and bouldering room
- Health spa with sauna and steam room
- Free car park
- Play zone soft play area



New council leader prepares to take office

The council will soon welcome a new leader as Councillor Tricia Gilby prepares to take office.



Tricia will take over from Councillor John Burrows, who announced he was to step down as council leader at the end of last year.

Councillor Burrows will remain a ward councillor representing Brimington North.

Tricia is currently the council's cabinet member for economic growth. She was elected as a borough councillor in May 2015 and has served as chair of two of the council's scrutiny committees.

She was also elected as a county councillor in February 2015 and will step down from this role at the county elections this May.

Councillor Terry Gilby has also announced he will step down from his role as the council's deputy leader. He will continue to serve as a ward councillor for Brimington North.

Terry will be replaced as deputy leader by Councillor Amanda Serjeant, who is currently the council's cabinet member for town centres and visitor economy.

Northern Gateway work underway

Work has started on the Northern Gateway regeneration scheme.

Chesterfield-based company Whittam Cox Architects (formerly WCEC Group) has met with local business owners on Elder Way to find out what environmental improvements would benefit them.

The company is now developing designs of how Elder Way could be developed to make it a more

attractive environment for residents, shoppers and visitors.

This is part of the wider scheme which will see the redevelopment of the former Co-op department store, a new enterprise centre built on part of the site of the current Holywell Cross (Donut) car park and Saltergate multi storey car park refurbished with an increased capacity.



Free parking for Chesterfield residents

Chesterfield residents can continue to park for free in town centre car parks.

All residents who live in the borough and pay Council Tax to Chesterfield Borough Council will receive a parking disc with their 2017/18 Council Tax bill.

This allows parking in the following town centre car parks:

- Albion Road
- Derbyshire Times
- Devonshire Street
- Durrant Road
- Hollis Lane
- Holywell Cross
- Queens Park (North and South)
- Spa Lane
- Station Road
- St Mary's Gate
- Theatre Lane
- West Street.

The parking offer is valid before 10am and after 3pm each Monday to Saturday and all day on Sundays and bank holidays. You must pay the standard parking charges to park at other times.

To use the pass, just make sure it is displayed on the dashboard of your vehicle and is clearly visible through the windscreen.

The offer is part of our commitment to support town centre businesses and encourage people to shop local. For information on markets and events coming up in the town centre, see page 20.



Town Hall refurbishment

Work has begun refurbishing Chesterfield Town Hall.

This will see Derbyshire County Council's register office, currently on Beetwell Street, move to the ground floor of the Town Hall.

A floor will also be freed up for use by other public sector organisations.

This means the building can generate at least £240,000 each year to invest in protecting frontline services. This is on top of the rent from the four voluntary sector organisations operating from the basement.



Site clearance nearly done

Work to demolish and clear the site of the former Queen's Park Sports Centre is almost complete.

The centre, on Boythorpe Road, closed in January 2016 when the new £11.25 million Queen's Park Sports Centre opened on the site of Queen's Park Annexe.

Councillors have agreed to produce a detailed feasibility study on options to replace the centre with 3G artificial sports pitches which can be used for a variety of sports including football, hockey, rugby and athletics.

The study is expected to be completed later this year.

Charlie and Finlay from Holme Hall Junior School help with tree planting at Loundsley Green.

Chesterfield set to bloom this spring

As you look out on the spring blooms in Chesterfield's parks and open spaces, remember that the winter months have been a busy time for our parks staff.

They have been given a helping hand by local school children to plant more than 39,000 bulbs over the winter months.

Youngsters from Westfield Infant School, Newbold Church of England Primary School, Outwood Academy in Newbold, Hasland Junior School, Staveley Junior School and Brimington Junior School worked with our staff and volunteers to plant the daffodil bulbs in areas including:

- Pevensey Green estate
- Newbold CofE Primary School grounds
- Somersall Park
- Thistle Park
- King George V Playing Fields, Staveley
- Eastwood Park, Hasland
- Stand Road Park.

Children from Holme Hall Primary School supported by Holme Hall Unite also helped to plant 105 trees of various species, which had been donated by the Woodland Trust, on Loundsley Green Road.

The event was organised by local community group Holme Hall Unite and was part of estate improvement work co-ordinated by the council.

Folk singer Emma Stevens performed to the crowd as a treat for all their hard work.

Children from Highfield Hall Primary School helped to plant a further eight trees at Stand Road Park next to the new wetland area with the help of local police.

Residents can follow the example of these youngsters by taking part in the best kept garden competition as part of the annual Chesterfield in Bloom campaign.

We're hosting a launch event on Saturday 22 April with a plant sale in Chesterfield Market Place where you can find out more about the competition, buy plants and get advice on how to plant and tend them.

The competition encourages us all to take an active interest in improving the environment to make Chesterfield a cleaner and greener place to live, work and visit.

It has categories including: best front garden, best back garden, best allotment site, best allotment plot and best pub/restaurant.

The competition is for everyone, not only for people with gardens. There is also a category for best container garden or hanging basket.

Chesterfield in Bloom forms the borough's entry into the regional East Midlands in Bloom competition.

Last year, the borough won a gold award for the first time in the competition and this year, we are hoping to do the same. The judges were particularly impressed with the levels of community participation.

We have a thriving Chesterfield in Bloom committee which organises events including litter picks to brighten up their areas.

For more information about Chesterfield in Bloom or to join the committee, contact John Ramsey, principal green space strategy officer, by emailing: john.ramsey@chesterfield.gov.uk or calling 01246 345097.





Join in with celebrations at the Winding Wheel

Chesterfield residents are invited to a series of special events to mark the 30th anniversary of the Winding Wheel.

Previously a cinema, the building was bought by the council and completely refurbished. While the original decor was kept intact the fixed seating was removed and a dance floor added enabling it to open as the Winding Wheel Exhibition, Entertainment and Conference Centre in 1987.

To celebrate this anniversary, we're hosting a series of events from Monday 15 to Sunday 21 May. This will include:

- A specially commissioned new exhibition prepared by Chesterfield Museum looking at the history of the building since it was

built as The Picture House in 1923 including its time as the Odeon and the Fusion Discotheque and later, Jingles nightclub in the Ballroom and café area – this will also include people's memories of visiting the venue over the years.

- Guided tours of the building – including the chance to go backstage and explore areas usually off-limits to the public such as the kitchens and dressing rooms.
- Cinema showings of movies on the big screen in the auditorium honouring the building's history as a cinema.

- The hit show – the Magic of Motown in the auditorium on Saturday 20 May at 7.30pm featuring 40 back-to-back Motown hits by artists including: Marvin Gaye, Diana Ross, Stevie Wonder, The Temptations, The Supremes, The Four Tops and many more.

- A nostalgic night of ballroom dancing in the ballroom: the music will include timeless standards from the 20th century and dancing will be a mixture of ballroom, Latin and sequence.

- A special celebratory concert by the Northern Chamber Orchestra in the auditorium on Sunday 21 May at 7.30pm, the programme includes: CPE Bach Symphony in Eb Wq179, Spring from the Four Seasons by Vivaldi, Handel's Water Music – Suite in F, Malcolm Arnold's Sinfonietta No 1, and Mozart's Symphony No 29.

For more details of these events or to book, visit www.chesterfieldtheatres.co.uk. You can also call the box office on (01246) 345222.

Since opening in 1987, the Winding Wheel has gone from strength to strength.

The building was grade II listed in 2000.

In 2014, an extensive refurbishment was carried out thanks to a grant of £495,000 from Arts Council

England and a further £250,000 from the council to carry out improvements to both the Winding Wheel and the Pomegranate Theatre.

Work carried out at the Winding Wheel included:

- Increasing the power supply to three times the previous limit to allow the Winding Wheel to stage more large-scale productions.
- Installing a new fixed stage with an automatic stage extension allowing bigger productions on the stage.
- Installing a new lighting rig.
- Adding a new stage door and dressing room, as well as improving access to the stage for performers with limited mobility.
- Installing new moveable seating in the auditorium.

Today the Winding Wheel hosts a wide variety of shows including smash hit West End touring shows such as Dreamboats and Petticoats, Joseph and the Amazing Technicolor Dreamcoat and Blood Brothers, which all played to packed houses.

There are monthly fixtures including the Spotlight Comedy Club, ballroom dancing and talks held in the ballroom.

Already a popular venue for wedding receptions, it is also licensed to hold wedding ceremonies. It is also used for a variety of events, meetings and presentations. For details of venue hire, visit: www.chesterfieldvenuehire.co.uk or call (01246) 345 333.



Visit Chesterfield market – and shop local

We're encouraging residents to shop local and support local traders by visiting Chesterfield market.

We have a wide variety of markets held in our traditional open-air market place including the general market each Monday, Friday and Saturday.

Chesterfield Market Hall is also open year round Monday to Saturday with a selection of stalls including fresh meat and fish, exotic fruits, clothing and electrical items.

We also have a popular flea market each Thursday. The flea market offers a host of bargains and, maybe, even a priceless antique or two.

There is also a regular farmers' market on the second Thursday each month which offers award-winning produce including vegetables, rare breed meat, fish, Derbyshire honey, homemade cakes and cheese.

The next farmers' market takes place on Thursday 13 April.

This year, we are also offering young people the chance to experience life as a market trader at our young persons' market.

Young people aged between five and 22 can take a stall for free at the market on Sunday 30 April – although under 16s have to be accompanied by an adult.

It's a great opportunity to sell unwanted toys and books as well as clothes that no longer fit. You can also sell products that you've either bought or made – although restrictions apply to food products.

For more details or to book a pitch, visit: www.visitchesterfield.info/youngpersonsmarket.

The last Sunday of each month also sees the regular artisan market organised in conjunction with The Market Co held in New Square.

The artisan market offers some of the finest locally-sourced produce with the chance to taste some of the items and talk to the friendly stall-holders. There is also a selection of gift items which will make ideal presents for family and friends as well as lively entertainment.

For more information, visit: www.themarketco.co.uk/markets/chesterfield-artisan-market.



Have a crafty time at Chesterfield Museum

Youngsters can come along and join in the monthly craft activities held at Chesterfield Museum.

The sessions, held on the last Friday of each month at 11am and 2pm, are free and are suitable for children aged from three to five.

They use craft materials to explore a theme.

Upcoming events include:

- Friday 31 March – Spring flowers and gardens
- Friday 28 April – Dinosaurs
- Friday 26 May – Very Hungry Caterpillar.

All children must be accompanied by an adult.

Chesterfield Museum is open each Monday, Thursday, Friday and Saturday from 10am to 4pm. Admission is free.



Revolution House opens for the summer

Residents can visit a piece of Chesterfield's history as Revolution House in Old Whittington opens its doors for the summer season.

The house, which played a key role in the overthrow of James II in 1688, will be open each Saturday, Sunday and Bank Holiday Monday until Saturday 24 September from 11am to 4pm.

Admission is free but any donations towards the upkeep of the house will be welcome.



Best foot forward...

It's time to get out your walking boots as the Chesterfield Area Walking Festival returns for another successful year.

This year's festival runs from Saturday 6 to Sunday 14 May with walks taking place every day.

There is a variety of walks to suit all ages and levels of fitness ranging from a family ramble of two to three miles to a trek of 34 miles, all in the beautiful Derbyshire countryside.

Highlights include the George Stephenson walk taking in places of interest connected with the 'Father of railways' who made Chesterfield his home, and a bumble bee safari.

Most walks are free and all are led by an experienced walk leader who knows the history, wildlife and the best places to walk.

For more information or to book your place on a walk, visit: www.chesterfieldwalkingfestival.co.uk.

Tickets are also available from Chesterfield Visitor Information Centre in Rykneld Square, next to the Crooked Spire church. You can call the team on (01246) 345777 or 345778 or email tourism@chesterfield.gov.uk.

What's on

Chesterfield Market

General market each Monday, Friday and Saturday. Flea market each Thursday.

Thursdays 13 April, 11 May, 8 June
Farmers' market

Sundays 30 April, 28 May, 25 June
Artisan market in association with The Market Co.



Walking Festival

Saturday 6 to Sunday 14 May
Chesterfield Area Walking Festival
See page 21.

Chesterfield Museum

Open each Monday, Thursday, Friday and Saturday, 10am to 4pm. Admission free.
Tel: (01246) 345727
www.chesterfield.gov.uk/museum



Fridays 31 March, 28 April, 26 May
Children's craft workshops

Thursday 11 May, 2pm; Saturdays 29 April and 20 May, 11am and 2pm
Behind the scenes tours
Tours are free but must be booked in advance.

Saturdays 1 April, 6 May and 3 June, 11am and 2pm
Story telling sessions
Stories for children aged four to seven years.

Saturday 13 May, 10am to noon and 1pm to 4pm
Meet George Stephenson
Have a chat with this famous railway pioneer and discover his connection with Chesterfield.

Revolution House

The historic house is open each Saturday, Sunday and Bank Holiday Monday until Sunday 24 September. Admission free.
Tel: (01246) 345727
www.chesterfield.gov.uk/museum

Pomegranate Theatre

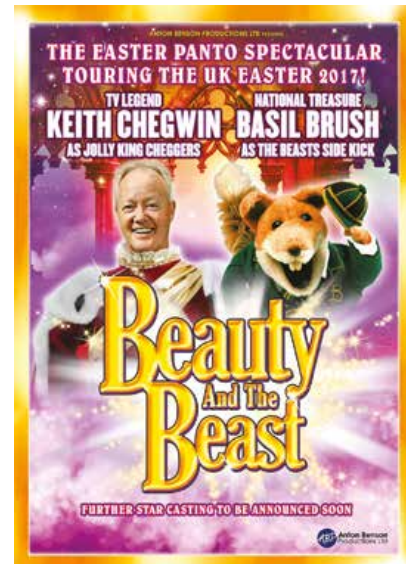
www.chesterfieldtheatres.co.uk
Box office: (01246) 345222



Tuesday 4 to Wednesday 5 April; evenings 7.30pm, Wednesday matinee 2pm
Made in Dagenham
Presented by Chesterfield College Performing Arts Company.

Thursday 6 April, 7.30pm
Champions of Magic
Illusionists direct from a hit season in London's West End.

Saturday 8 April, 3pm and 7pm
Easter pantomime: Beauty and the Beast
Starring TV legends Keith Chegwin and Basil Brush.
See next column for poster.



Wednesday 19 April, 7.30pm
Pride and Prejudice
Presented by Pantaloons Theatre Company.



Wednesday 26 to Saturday 29 April; evenings 7.15pm, Saturday matinee 2.15pm
Hairspray - The Broadway Musical
Amateur production by Chesterfield Operatic Society.



Thursday 4 to Sunday 7 May, various performance times
The Very Hungry Caterpillar
The popular children's story brought to the stage.

Summer Comedy Play Season



Tuesday 9 to Saturday 13 May; evenings 7.30pm, Wednesday matinee 2pm, Saturday matinee 3pm

Changing Rooms

Written by Marc Camoletti, presented by Rumpus Theatre Company.

Two and Two Make Sex

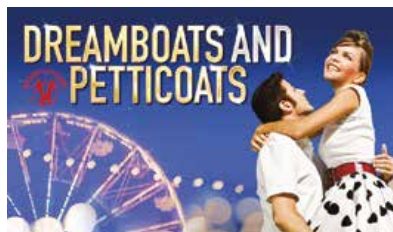


Written by Leslie Darbon and Richard Harris, presented by Tabs Productions.

OFFER - Summer Comedy Play Season - see both plays for £25. Available when you call the box office on (01246) 345222.

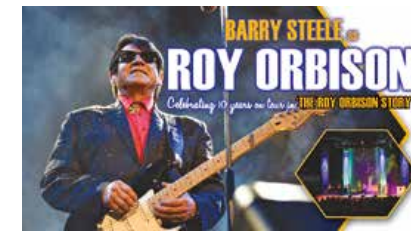
Winding Wheel

www.chesterfieldtheatres.co.uk
Box office: (01246) 345222



Monday 27 March to Saturday 1 April; evenings 7.30pm, Wednesday matinee 2pm, Saturday matinee 3pm
Dreamboats and Petticoats
Tenth anniversary production of the 50s nostalgia show

Friday 21 April, 8pm
T.Rextasy
40th commemorative anniversary tour.



Saturday 22 April, 7.30pm
The Roy Orbison Story
Presented by Barry Steele.

Wednesday 26 and Thursday 27 April; evenings 7.30pm, extra Thursday performance 10.30am
Dinosaur World
Interactive new show for all the family.



Stephen Carlin Sean Moran

Thursday 27 April; 8pm, doors open 7.15pm
Spotlight Comedy Club
Featuring Stephen Carlin and Sean Moran. For ages 18 and over.



Wednesday 3 May, 7.30pm
The Lady Boys of Bangkok
Hotter....sexier....funnier than ever.

Pomegranate Screenings

Highlights from film broadcasts at the Pomegranate Theatre

Thursday 20 April, 7pm
National Theatre Live: Rosencrantz and Guildenstern are Dead
Starring Daniel Radcliffe, Joshua McGuire and David Haig broadcast live from The Old Vic theatre in London.



Saturday 22 April 2017, 7pm
National Theatre Live: Twelfth Night
National Theatre production of the play by William Shakespeare.



Sunday 30 April, 7pm
RSC Live: Julius Caesar
Recording of the first play in the Royal Shakespeare Company's Rome season.

Sunday 28 May, 7pm
RSC Live: Antony and Cleopatra
Recorded broadcast from the Royal Shakespeare Company.

See full Pomegranate Screenings listings at:
www.chesterfieldtheatres.co.uk/cinema

Handy guide to keep

This guide explains which services your Council Tax helps provide and how to contact the organisations providing them.

Chesterfield Borough Council

receives 10 per cent of the Council Tax you pay

Contact us about:

- Abandoned vehicles
- Anti social behaviour
- Benefits advice
- Bin collections or damaged bins
- Building control
- Bulk collections
- Business rates
- Business support
- Caravan sites and illegal encampments
- Car parks (except privately run ones)
- Cemeteries
- Commercial waste
- Conservation areas
- Council Tax
- Crematorium
- Dog fouling
- Dog wardens
- Electoral registration
- Economic development
- Energy advice
- Environmental health
- Fly tipping
- Graffiti
- Homelessness
- Housing benefits
- Leisure centres (Queen's Park Sports Centre and Healthy Living Centre, Staveley)
- Licensing

Derbyshire Fire and Rescue Service

receives 5 per cent of the Council Tax you pay

Contact them about all fire and fire safety related issues:

- By visiting: www.derbys-fire.gov.uk
- Ringing 01332 771221 for all non-emergency calls
- Ringing 999 for emergencies only

- Litter problems
- Markets (indoor and outdoor)
- Museum
- Noise pollution
- Parks and open spaces
- Pest control
- Planning applications (making or commenting on one)
- Planning enforcement
- Pollution control (air, noise, odour and smoke)
- Private housing advice
- Recycling
- Street cleaning
- Stray animals
- Theatres (Winding Wheel and Pomegranate Theatre)
- Visitor Information Centre
- Welfare benefits

Council house issues

- Adaptations
- Choice based lettings (On the Move)
- Community involvement
- Decent homes
- Estate management
- Housing solutions team
- Rent payments and arrears
- Repairs/improvements
- Right to buy
- Sheltered housing

Contact us by:

- Visiting www.chesterfield.gov.uk
- Ringing (01246) 345345
- Texting 07960 910264

Derbyshire Police

receives 11 per cent of the Council Tax you pay

Contact them about all crime issues:

- By visiting www.derbyshire.police.uk
- Ringing 101 for all non emergencies (24 hours a day)
- Ringing 999 for emergencies only

Derbyshire County Council

receives 74 per cent of the Council Tax you pay

Contact them about:

- Adoption and fostering
- Adult care (including support in the home)
- Adult community education
- Blue badge scheme
- Bus shelters
- Care homes
- Care for people with disabilities
- Children's centres
- Children and family services
- Gritting of roads
- Lampposts
- Library books and services
- Pavements
- Potholes
- Public transport (although services are run by private companies)
- Records office
- Recycling and waste collection centres (rubbish tip)
- Registry services (birth, marriages, deaths)
- Roads – condition
- Roads – safety and changes to road layout
- Schools
- Street lighting
- Tapton Lock Visitor Centre
- Trading standards
- Trusted Trader Scheme
- Youth centres

Contact them:

- By visiting www.derbyshire.gov.uk
- Ringing 01629 533190

For residents of Brimington and Staveley only

Brimington Parish Council

Contact them by:

- Visiting: www.brimingtonpc.co.uk
- Ringing 01773 833805

Staveley Town Council

Contact them by:

- Visiting www.staveleytowncouncil.gov.uk
- Ringing (01246) 473132