

Your Chesterfield

Incorporating Our Homes tenants' newsletter



Opportunities for local apprentices.
Pages 6 to 7

Getting fitter and healthier.
Pages 12 to 13



Welcome ...

to the spring edition of Your Chesterfield



Councillor Tricia Gilby

This year marks the 100th anniversary of the Bill allowing the Chesterfield Corporation, the forerunner to the current Chesterfield Borough Council, to build the first council homes for its residents to rent.

Like many children of my generation I was brought up in a brand new council house. There was a shortage of housing at the time and my parents were delighted to be offered a good quality home at a price they could afford to bring up first me, and then four years later, my sister too.

It is sad that 100 years on we still find that many people in Chesterfield struggle to afford their own home. So I am pleased that for the first time in a generation the council is again able to build new quality, affordable homes. More than 40 new homes are being constructed in the borough (see pages 16 to 17), and we have plans to build more in the coming years.

Spring is the time of year which sees Council Tax bills arrive. We know it is never a welcome sight because household finances, like those of councils, are very tight. But equally we know how much you rely on the services we provide for you and your families. So as politicians the balance we have to achieve is between ensuring the 50 services we provide are properly funded and keeping your Council Tax bills as low as possible.

Most Chesterfield residents live in band A properties, which will see an increase of 6.4p per week. This means they will receive more than 50 Chesterfield Borough Council services for £2.11 per week.

Even after this increase residents in Chesterfield will pay some of the lowest Council Tax rates in Derbyshire. Chesterfield Borough Council receives just 10 per cent of the Council Tax you pay with the overall amount made up of precepts from Derbyshire County Council (which gets 74 per cent), the police (who receive 12 per cent) and the

fire and rescue service (which gets four per cent) for the services they provide.

In addition to paying for day-to-day services, Council Tax funding also contributes to major projects in the town. For example, this year we will see the completion of the Saltergate multi-storey car park and work begin on the artificial sports pitch on the former Queen's Park Sports Centre site.

One of the council's most important priorities is ensuring that local residents benefit from the economic growth that is being created in Chesterfield. Back in 2011 we introduced a Local Labour Clause policy into all major development planning applications requiring those developers to use local people to carry out a significant proportion of any work they do. The case study on pages 6 and 7 shows how successful this has been in providing jobs and apprenticeship opportunities.

Finally 2019 is also the year which will see the council elections (see page 3). This is your opportunity to elect the borough councillors who will represent you over the next four years.

Last year's celebrations of the 100 year anniversary of the Representation of the People Act - which gave some women and all men the right to vote in local and national elections - reminded us of the struggles which people went through to get this opportunity.

At this turbulent time in our country's politics it is more important than ever that you use your right to vote so I hope you make your voice heard on Thursday 2 May.

Councillor Tricia Gilby
Leader of Chesterfield Borough Council

Make sure you're ready to vote

Elections take place on Thursday 2 May allowing Chesterfield residents to vote for the councillors who will represent them for the next four years.

We have been contacted by residents with queries on if they can vote and how they should place their ballot. We have collected some of the questions here.

I'm on holiday on 2 May. Does this mean I can't vote?

No - you can apply to vote by post. The deadline for a postal vote is 5pm on Monday 15 April. An application form is available to download from the elections and voting section of our website.

If you have applied for a postal vote before 19 March, you will receive your postal ballot around 13 April.

Any applications received after 19 March but before the deadline on 15 April should receive their postal ballot around 20 April.

What happens when I arrive at a polling station?

The staff at the polling station will give you a ballot paper listing the candidates you can vote for. Residents in Staveley and Brimington will receive two ballot papers as they will also be able to vote in the elections taking place to Staveley Town Council and Brimington Parish Council respectively.

Do I have to vote for more than one candidate?

Chesterfield has 48 councillors across 19 wards. Each ward has either two or three councillors. The ballot paper will say how many councillors you can vote for.

Do I have to mark my vote in pencil?

There will be a pencil provided in the booth but you are able to mark your ballot paper using your own pen if you prefer.

What if I make a mistake when casting my vote?

Don't worry. As long as you haven't already put your vote in the ballot box, just let the polling station staff know and they can issue you with a replacement ballot paper.

If you have any queries about the forthcoming local elections, information is available on our website:
www.chesterfield.gov.uk/elections.

You can contact our elections team by email: elections@chesterfield.gov.uk or call (01246) 345402.

YOUR VOTE MATTERS

DON'T LOSE IT



Providing value for money services

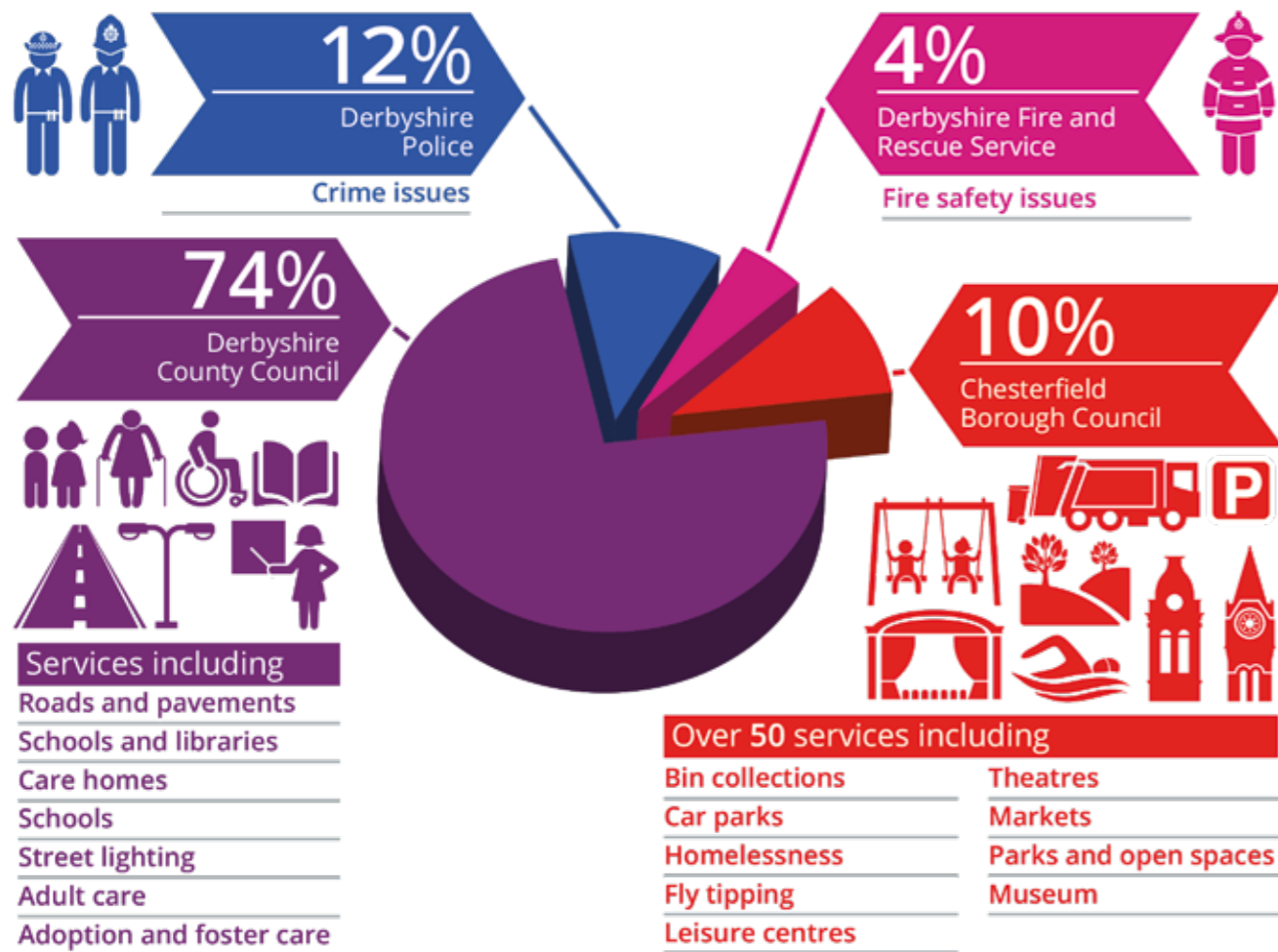
Councillors have agreed a small increase in the amount residents pay in Council Tax to Chesterfield Borough Council as the council continues to face cuts in funding from the Government.

Since 2015, the council has lost £1.9 million each year in funding from the Government and faces a further cut of £425,000 in the coming financial year.

We have seen an increase in the amount we receive in business rates as a result of the work we have carried out to support business

growth, seen an increase in income following improvements at the Pomegranate and Winding Wheel Theatres and from renting out office space in the Town Hall.

Despite these measures, it has been necessary to increase in the amount our residents pay in Council Tax for the services provided by Chesterfield Borough Council. For the majority of residents, this will be an increase of 6.4 pence per week.



Most households in Chesterfield borough live in band A properties and will see their bills increase from £106.59 to £109.93 from April.

Households living in in band D properties will see their bills increase from £159.89 to £164.89.

Councillor Tricia Gilby, Chesterfield Borough Council's leader, said: "Deciding to increase Council Tax by any amount is not something that we consider lightly, especially when we know how many of our residents are struggling to make ends meet.

"But given the Government's continued austerity drive, we really have no other option if we are going to continue to provide facilities and services of the quality that our residents and businesses have a right to expect.

"One of the council's key priorities is to provide value for money services.

"Our staff work hard, day in, day out, to provide more than 50 services to our residents.

These include emptying your bins, keeping our streets clean, providing award-winning parks and open spaces, operating sports and cultural venues and making sure that people's health and wellbeing is protected through our food safety, planning and licensing activities.

"The majority of our households will receive all of these services in 2019/20 for just £2.11 per week, which I believe still represents good value for money."



Refurbished bar and reception area in the Winding Wheel Theatre.

How your Council Tax is spent

Although Chesterfield Borough Council collects Council Tax, the council keeps only 10 per cent of the money collected.

The majority of Council tax paid by residents goes to Derbyshire County Council, which receives 74 per cent of your Council Tax. The county council has increased its portion of Council Tax by 3.99 per cent, which includes two per cent which will be specifically used to fund adult social care services.

Derbyshire Constabulary receives 12 per cent of the Council Tax you pay, which will be spent on providing policing services in the county. The Constabulary has increased its portion of Council Tax by 12.46 per cent.

Derbyshire Fire and Rescue receives the remaining 4 per cent and has increased its portion of Council Tax by 1.98 per cent.

Residents in Brimington also pay Council Tax to Brimington Parish Council and residents in Staveley also pay Staveley Town Council for the services it provides.

You will receive your Council Tax bills – which combine all of these increases together into one charge – through the post. With this you will also receive your residents' free parking pass.

If you park for two hours per week 30 times per year – the residents' car parking pass would save you £80 a year while if you use it on the same basis every week, it would save you £140 per year.

Opportunities for local apprentices

Chesterfield apprentice Kieran Moulds says “The benefit of living locally is that I get easy access to work.” Kieran isn’t joking – he lives just down the road from where he is currently working building new homes.

Kieran is employed as an apprentice by William Davis Limited and is currently working on the Skylarks development on Dunston Lane building two to five bedroom family homes in 15 different designs.

He is one of four apprentices from the local area employed by William Davis to work on the new development.

Kieran says he particularly values the opportunity to use his hands on site: “The benefits of doing an apprenticeship is that you actually get to do more practical work than theory - you do work theory at college but I prefer to do more practical.”

Fellow apprentice Sam Flavell agrees. He says: “I think the main benefits of doing an apprenticeship are you’re earning money whilst you’re learning.

“Typically with trades it is better to learn on site I think – rather than in a college classroom – so you’re getting that experience from early on in your career.”

He has the following advice to offer to someone considering applying for an apprenticeship: “Go for it, 100 per cent, there’s no way better to learn than hands on and in the environment that you’re going to be working in.”

Gary Long, apprentice manager at William Davis Homes says the company recognises the benefits of employing the apprentices: “From day one, all of them have shown tremendous application, from interview to present day.

“They give 120 per cent both on-site and off-site; their work ethic is second-to-none.

“We try and employ locally throughout all the William Davis sites but especially here at Chesterfield, it’s brilliant really.”

Apprenticeship opportunities such as these are made possible through the Local Labour clause, which is something the council includes in every major planning application we accept.

This requires developers to provide a strategy that uses materials supplied by local companies and has meant that local suppliers have benefitted

from more than £2.3 million worth of business.

The clause also ensures employment and apprenticeship opportunities are offered to local people.

As a partner in the Apprentice Town initiative, the council is committed to offering and promoting apprenticeship opportunities for local people of all ages.

Councillor Terry Gilby, the council’s cabinet member for economic growth, says: “We think apprenticeships are really important; it gives a lot of people a chance to find employment.”

Although many apprentices like Kieran and Sam take up their apprenticeships straight from school or college, they are not only for young people as Councillor Gilby explains: “While they do benefit a lot of young people it doesn’t matter what your age is you can take up an apprenticeship and learn new skills.

“They are also for to people coming back into the jobs market.”

We list apprenticeship opportunities available at the council and with other local employers on our website.

There are lots of opportunities available – not only for manual work such as building and construction but also in a variety of roles including business, administration, marketing, healthcare, working with animals and beauty.

Visit: www.chesterfield.gov.uk/apprenticeship-vacancies to see the current vacancies.



Councillor Terry Gilby (second right) meets apprentices at The Skylarks development

Bank holiday bin collections

Residents will see changes to their bin collections over the forthcoming bank holidays.

Bins due for collection on Good Friday, 19 April, will be collected as usual

Bins due for collection on Easter Monday, 22 April, will be collected on Saturday 20 April

Bins due for collection on the May Day bank holiday, Monday 6 May, will be collected on Saturday 4 May

Bins due for collection on the Spring Bank Holiday, Monday 27 May, will be collected on Saturday 25 May.

This applies to black, blue and green bins.

Please make sure your bin is out by 7am on collection day as crews may be out at different times.

Although we cannot accept any side waste with your black bin, we can accept extra recycling with your blue bin. Please place it in a plastic box or bag (not black sacks) keeping glass separate. If you have any small electrical items, such as alarm clocks, phones, radios or toasters, you can leave these on top of the blue bin.

You can check when your bins are due to be collected at any time by visiting:

www.chesterfield.gov.uk/bin-day



Developing our Local Plan

Thank you to everyone who took part in the recent consultation on the new Local Plan.

The plan sets out proposed future housing, industrial, commercial and leisure land uses in Chesterfield until 2033 and includes setting aside enough land for around 5,250 new homes, with a requirement to build at least 4,374 of these. All major housing developments must have up to 20 per cent affordable housing included within them and at least 25 per cent must also be easily adaptable for people who may have mobility issues.

Residents and local businesses had the opportunity to have their say on the proposals during a six week period from Monday 14 January to Friday 22 February.

The responses to the consultation will now be considered by an independent Government planning inspector at a public planning inquiry, which it is expected will take place later this year.

The inspector will consider any comments made as part of the consultation as well as take representations at the hearing.

For more details, visit: www.chesterfield.gov.uk/localplan

New Queen's Park sports pitch update

This month sees the start of work to create the new artificial sports pitch on the site of the former Queen's Park Sports Centre.

The new all-weather sports pitch will support seven-a-side and five-a-side games.

The area surrounding the pitch will be landscaped with trees, shrubs, bedding plants and grass to support a planting scheme that is sympathetic to the original park design by William Barron that was in place before the old Queen's Park Sports Centre was built in 1968.

Work on the pitch is due to be completed in the summer.

Councillor Chris Ludlow, the council's cabinet member for health and wellbeing says:

"The pitch will be available for hire by individuals, groups and clubs and from April we will be seeking expressions of interest from individuals and clubs interested in hiring the new pitch.

We want to ensure a range of user groups can access the facility to support increasing physical activity and healthier lifestyles."

"The pitch helps to meet a need identified by Sport England to increase the number of artificial pitches available in the borough."

"We are really pleased that this development is taking place and the positive impact that this will have on Chesterfield's sporting infrastructure."

If you are interested in using the pitch, please email your details to: qpsscquiries@chesterfield.gov.uk this will register your interest and will then allow staff from our health and wellbeing team to make contact with you from April.





Keeping our town centres free from litter

Each morning when most of us are tucked up in bed, spare a thought for our street cleaning staff who are out in all weathers from 4am to keep our town centres and streets clean.

We have five crews who are out each morning keeping the borough clean and tidy – including Staveley and Chesterfield town centres using both mechanical and hand sweepers to ensure the areas are kept as clean as possible.

Councillor Chris Ludlow, the council's cabinet member for health and wellbeing, joined one of the crews in Staveley town centre.

She says: "Staveley market square is a natural thoroughfare with people using it to visit the shops and businesses in the town centre.

"People don't want to have to dodge rubbish and debris, which is why our staff are out bright and early to make sure the area is kept free from litter.

"They are out in all weathers during the winter including rain, sleet, snow and icy winds but

whatever the weather, they always put in the effort to make sure the area is kept clean."

As well as the town centres, the teams also ensure the streets are kept clean in our neighbourhoods in all parts of the borough including Brimington, Inkersall, Duckmanton, Hollingwood, Hasland, Barrow Hill and Newbold.

Between April 2017 and March 2018, they collected 985 tonnes of litter from our streets.

Councillor Ludlow adds: "The teams do a fantastic job in keeping our neighbourhoods clean and free from litter in all parts of the borough.

"They are out both early in the morning and into the evening but, sadly, some of this good work is undone by people who come along and drop litter.

"We all have a responsibility to take a pride in our

areas to keep them free from rubbish and make sure that litter goes in the bin and not on the floor."

Our enforcement officers will hand out fixed penalty notices of £60 to anyone seen dropping litter in the borough.

Anyone who doesn't pay the fixed penalty or is found to be a persistent offender can expect a hearing in the magistrates' court. Here the maximum penalty is £2,500.

Councillor Ludlow explains: "Our enforcement officers only issue fixed penalty notices when necessary – if people didn't drop litter, then we wouldn't have to issue them at all.

"The money that we receive from the fixed penalty notices and from any fines is used to fund the service and make sure the streets of the borough are kept clean."

Help us keep the streets clean

If you see litter or fly-tipping on the streets in any part of the borough, please report it to us using the form on our website.

Visit: www.chesterfield.gov.uk/contact or call us on (01246) 345345.

You can also contact us to let us know if our street cleaning teams are doing a good job in keeping your part of the borough clean and free from rubbish.



Getting healthier and fitter

Joining a gym can be a daunting experience at the best of times – and this can be worse if you suffer from a long-term medical condition.

Yet making the step can help you get fitter, healthier and give your confidence a real boost, just as it did for Karen Scattergood.

After spending 12 years in a wheelchair, Karen had bilateral hip replacements in 2007, she explains: "During this time I felt very isolated and lonely and I lost confidence in myself."

Karen's GP sent her to the Healthy Living Centre in Staveley, through the health referral scheme where she attended a 12 week chair based exercise course.

The scheme is aimed at people who have, or are at risk of developing a medical condition. With sessions taking place at both the Healthy Living Centre and at Queen's Park Sports Centre in the town centre, our friendly staff can help you to exercise and be more physically active to improve your health.

During the initial 12 week course, Karen made lots of friends and decided to continue using the centre. She enjoyed the social aspects of fitness and continued using the centre for the next three years until she contracted bronchial pneumonia and had to stop.

Karen was then referred onto the respiratory team for treatment. Once she recovered, she asked to re-join the Healthy Living Centre again on the health referral scheme.

Karen says: "I started back very gently on the easy line circuit, hand cycle and one minute on the treadmill. After the 12 week course I decided to join as a full member again as my breathing had improved so much."

Karen has never looked back since. She uses the gym three times a week and also attends falls prevention classes. Her mobility has improved and her breathing problems are under control.

In the last eight years she has lost six stones in weight. She says: "It's made a huge difference to me – my life has changed and I feel better than ever."

She would encourage anyone else suffering from a medical condition to speak to their GP or health professional and see if they could also be referred on the scheme.

Join our leisure facilities

A standard membership is £28.90 each month.

For this you have unlimited use of the facilities at both our sports centres.

Healthy Living Centre, Staveley

The Healthy Living Centre is equipped with a large 150 station fitness suite with an extensive range of fitness equipment for all levels and abilities, studios for group exercise classes and a six lane swimming pool. There is also a climbing wall and bouldering wall, a large pirate themed soft play and a café and social area

Queen's Park Sports Centre, close to the town centre

Queen's Park Sports Centre has an 80 station fitness suite, and an eight court multi-functional sports hall suitable for a large range of activities such as; badminton, table tennis, five-a-side football, bowls and indoor cricket, as well as facilities for hosting sports events or for private hire. There are two squash courts, and studios for group exercise classes along with an eight lane swimming pool and learner pool.

There's a variety of membership options to suit your circumstances including a family membership, which is available for £57.80 for up to two adults and two children under 16.

Corporate memberships and Motiv8 memberships for children aged between eight and 15 for £10 each month are also available.

To find out more about membership options, visit: www.chesterfield.gov.uk/leisure.



Karen on one of the pieces of gym equipment she uses regularly at the Healthy Living Centre in Staveley

Small changes add up

We know from comments we receive that one of your concerns is protecting the environment. One of the places where we have been making changes is in our cafés.

Pupils from Old Hall Junior School in Chesterfield recently visited the Annexe Café at Queen's Park Sports Centre. The children had been learning about the environment and came along to see some of the changes that we have made to become more environmentally friendly.

These include switching the takeaway cups to ones that are made from 100 per cent recyclable materials.

We now sell 'Ecoffee' cups made out of bamboo fibre which can last a lifetime but are also biodegradable – they can compost within four weeks. The lid and grips are also made of silicone which can be recycled.

Customers who bring their own cups get a discount on every hot drink they buy. We also have recycling bins in the café to encourage customers to recycle their items.

We also use local suppliers wherever possible both to reduce the café's carbon footprint and also to support the local economy.

Year six pupils Isaac and Emily were

impressed with what they saw when they visited the café.

Isaac says: "I enjoy the feeling how we're saving the environment and all the animals around it. I enjoyed learning about the carbon footprint because I never knew that was a thing."

Emily agrees: "Yes, I've enjoyed learning how we can help the ocean and the animals and environment around us."

"At the café, they are trying to get people to buy reusable coffee cups and use them instead of plastic ones – if we all made changes like this, it could really make a difference."

The Annexe Café at Queen's Park Sports Centre is open from 9am to 7.30pm Monday to Friday and 8.45am to 5pm at weekends.

The same standards operate at the Market Hall Café, which is open from 8am to 4.30pm Monday to Saturday.



Our Homes

A newsletter for Chesterfield Borough Council tenants and leaseholders



Insulating homes at Heathcote Drive. Page 22

Investing in new council homes. Page 16

Investment marks 100 years of council housing

In the coming year we will be investing in new council homes and refurbishing existing properties to improve the quality of housing for our tenants.

Plans are now underway to build a further 46 new homes – at Manor Drive in Brimington, the former Heaton Court at Brampton and the former Brockwell Court at Loundsley Green.

These new homes will be designed by the council's in-house architectural services team with building carried out by the council's own workforce and Fortem Solutions Ltd.

Councillor Amanda Serjeant, the council's deputy leader, says: "One of our key priorities is to improve the quality of housing in the borough and we are very proud that we will be able to provide these new homes to our tenants.

"Through the Local Labour Clause, we will also make sure that local firms are used to supply materials needed during the building work."

These new homes mark the 100th anniversary of the bill allowing the Chesterfield Corporation, the forerunner to the current Chesterfield Borough Council, to build the first council homes for its residents.

This followed reports from the borough's sanitary inspector which found that Chesterfield's population was increasing rapidly leading to a shortage of housing with overcrowding being very prevalent and an increase of insanitary houses.

The report recognised that the homes required would not be built by the private sector and urged the council to begin a house building programme.

The first two homes were completed in the summer of 1920 and were inspected by the then mayor of Chesterfield, Councillor W H Edmunds before the first tenants moved in – Mr Roe and Mr Naylor, both First World War veterans who had both given up their homes on enlisting to fight in the war. Their rent was 10 shillings per week with a further six shillings on rates.

The semi-detached properties were the first of 28 to be built on a site in the St Augustine's area and cost £1,000 each to build.

The Derbyshire Times of July 1920 praised the houses as 'compact, with through lighting and all modern conveniences' and was impressed that they had 'plenty of cupboard room – a matter which has not received the attention it deserved in some houses built in Chesterfield during the few years prior to the war.'

Councillor Serjeant adds: "It gives me great pride to represent a council which recognised the need for good quality social housing 100 years ago and provided new homes for its residents, including veterans who had served for King and country.

"In many ways the situation is similar today. Due to the Right to Buy scheme and restrictions on councils being able to replace lost council homes with new ones, we now have a shortage of two and three bedroom council homes which are in great demand.

"Many of those waiting for housing will be on incomes which due to austerity haven't had pay rises in line with rising living costs. The need for new council homes is as relevant now as it was then."

For more information on council homes available in Chesterfield, visit the On the Move website: www.onthemove-cbc.org.uk or call (01246) 345700.

Here is how we are investing to improve facilities for our tenants in the coming year:

£2.2 million
Replacement roofs on council homes

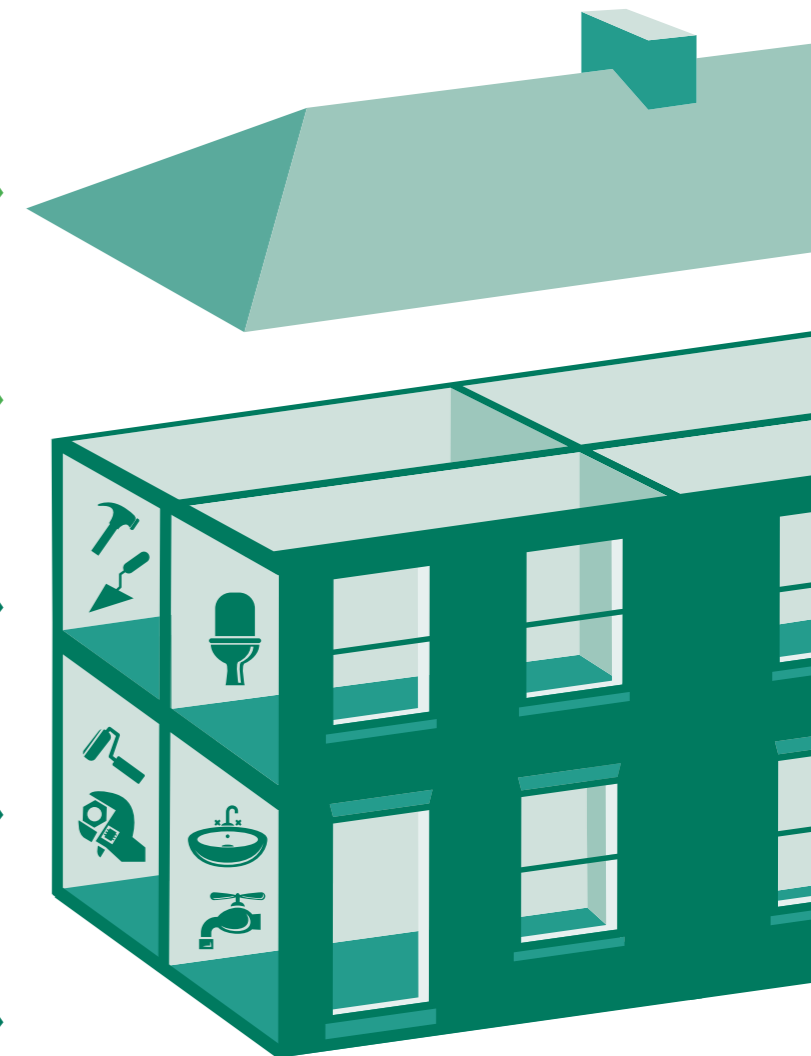
£1.9 million
Kitchen and bathroom replacements

£3.4 million
Grangewood estate improvements from Feb 2019 to April 2020

£1.2 million
Refurbishment of Markham Court

£1.6 million
Newland Dale estate improvements

£7 million
New council homes



Transforming Glebe Court

Work is almost complete on the refurbishment of Glebe Court in Old Whittington.

We are committed to providing good quality, comfortable accommodation for our tenants and no more so than our older persons' accommodation.

This is the second in our current programme of refurbishments with tenants moving back to Brocklehurst Court in Brampton before Christmas.

Work carried out at Glebe Court includes a new roof, complete rewiring of the building and overhaul of the heating system as well as enhanced fire protection measures ensuring our older residents are warm, dry and safe.

The look and feel of the building has been improved with new windows throughout including a new entrance canopy and new doors to the building's main entrance. The rooms have also been plastered and redecorated.

There are also new entrance doors to each flat. Each one has been refurbished to a high standard including a new fitted kitchen and bathroom with wet room shower.

Each flat has two bedrooms – meaning most of the tenants will have a space for family to stay when they visit.

Each flat also has a French door leading to a Juliet balcony.

The refurbishment has also improved access to the outside spaces with new storage for scooters and rubbish collection areas. All of the external staircases have been renewed and there are new landscaped gardens and improved paving.

Councillor Helen Bagley, the council's cabinet member for homes and customers, says: "In refurbishing our older persons' accommodation, we wanted to create contemporary homes that our tenants could feel proud of – while having the opportunity to live amongst friends and take part in different activities.

"The aim was to create a space that is much

lighter and more accessible than the sheltered housing complex that was here before and the whole place looks brighter and airier."

The new-look Glebe Court has been designed by the council's in-house architectural services team. Councillor Bagley adds: "One of our priorities is to improve the quality of life for local people and I am proud that, as a council, we are investing in improving the quality of the accommodation we offer for older people – and especially that we have used the skills of our in-house team in designing the improved facilities."

The work has been carried out by Fortem Solutions, which has also refurbished Brocklehurst Court in Brampton and is due to begin work on refurbishing Catherine Court, also in Brampton.

Following the work on these refurbishments, Fortem has also been given the contract to build 12 new homes at Heaton Court, as well as an extensive makeover of the Grangewood Estate.

For more information about accommodation for older people in the borough, visit: www.onthemove-cbc.org.uk or call the team at On the Move on (01246) 345700.

You can also call into the On the Move office on Low Pavement.



Work begins at Grangewood estate

Work has begun on major improvements to the Grangewood estate which will improve the look of the area and access around it.

We consulted with tenants about the work in October and their feedback was incorporated into the designs before work began on site last month.

The work includes:

Fully decorating the communal areas inside each block of flats, including new floor coverings and also improving the lighting in each of these areas.

We will be renewing all of the roof coverings as well as replacing all of the windows and doors to each block of flats as well as the windows and main door to each flat.

We will also be installing fencing to enclose each of the outside communal areas and landscaping these areas, renewing the existing footpaths around the estate and improving the lighting on the estate.

Tenants will also benefit from improved bin and recycling areas and additional car parking in the Birchwood Crescent area.

Councillor Helen Bagley, the council's cabinet member for homes and customers, said: "I'm proud that we have been able to begin the work on the Grangewood estate.

"The improvements will make a real difference to the look and feel of the estate for tenants – improving their safety and making it easier for them to get around the estate."

The work will be carried out by Fortem Solutions Ltd, which has also carried out the refurbishment of our older persons accommodation at Brocklehurst Court.

The work is due to be carried out over the next year and to be completed in spring 2020.



Contents insurance offer for tenants

We have teamed up with Thistle Tenant Risks to offer contents insurance for our tenants.



Their Crystal Insurance Scheme offers cover against risks including theft, fire, vandalism, burst pipes and other household risks so you can insure the contents of your home in an easy and affordable way.

For more information, call: 0845 601 7007 (it may be cheaper to call 01628 586187 from a mobile) or email: tenantscontents@thistleinsurance.co.uk



Barrow Hill update

Work is continuing to transform the Barrow Hill estate.

Work has been carried out on the north-eastern part of the estate from Woodford Way to Campbell Drive.

The works, totalling £1.6 million have seen improved car parking, new pathways improving access around the estate, new walls and fences, new and redesigned green spaces and new lighting installed in public areas of the estate.

Work is being carried out by the Casey Group.

A planning application has been submitted to make similar improvements to the south eastern part of the estate. If approved, work is due to begin in the summer.

Have your say on housing issues

We're looking for people to have their say on issues that matter to them.

Our tenant challenge panel, made up of tenants, is currently looking at all aspects of our response to anti-social behaviour and coming up with recommendations about how we can improve.

We are also carrying out a review of how we provide you with opportunities to influence our decision-making and the services we provide.

There are many different ways for you to work with us and you can be involved as little or as much as you like.

This could be through attending meetings or joining one of our groups. But for people who may not have the time or just don't feel comfortable in that type of environment who may still want to have a say in how the housing service is run, we can offer other ways to be involved that best suits them.

If you are interested in getting involved, contact our tenant participation team by calling (01246) 345147 or email: tpenquiries@chesterfield.gov.uk

Insulating our council homes

Stephen and Caroline Willoughby are looking forward to work being completed at their council home in Hasland.

Structural works have already been carried out to their house on Heathcote Drive before work can be carried out on the external wall insulation at the property.

This is one of 118 Unity properties, which are concrete panels on a steel structure. They were originally built as a short term strategy to combat severe housing shortages post war.

The structural works saw stainless steel plates fixed through the concrete panel to the structure underneath to give stability.

After this work has been done, we will be installing a new roof, fascias and soffits, and adding insulation to the roof voids as well as installing new windows.

Stephen says: "So far they have added the metal supports to the outside of the house – it's gone very well. Both the builders and the council have been very helpful.

"Everything should be great when it's finished – my parents have already had the work carried out at their house and their heating bills have gone down so I'm looking forward to that."

Councillor Amanda Serjeant, the council's deputy leader, says: "We are proud to be investing in our council homes. This work was originally planned for 2020/21 and I'm roud this has been brought forward.

"When the insulation work is finished, these homes will be much more energy efficient as well as saving money in heating bills. Both of these will make a real difference to our tenants."

Work is being carried out by Sustainable Building Services – a specialist in the insulation field.

These homes are the last in a programme which has taken four years to complete. All of our council properties now either have cavity filled insulation or external wall insulation leading to significantly lower energy bills for our tenants.



Free parking for Chesterfield residents

Residents can continue to park for free in some Chesterfield town centre car parks.

All residents who live in the borough and pay their Council Tax to Chesterfield Borough Council will receive a parking disc with their 2019/20 Council Tax bill.

You can park in the following town centre car parks:

- Albion Road
- Derbyshire Times
- Devonshire Street
- Durrant Road
- Hollis Lane
- Holywell Cross
- Queen's Park (north and South)
- Spa Lane
- Station Road
- St Mary's Gate
- Theatre Lane.

The parking offer is valid before 10am and after 3pm each Monday to Saturday and all day on Sundays and bank holidays.

You must pay the standard parking charges to park at other times.

Please make sure your pass is displayed clearly on the dashboard of your vehicle and it is clearly visible through the windscreen.

The offer is part of our commitment to support town centre businesses and encourage people to shop local. For information on regular markets and events happening in the town centre this spring, see pages 30 to 31.

How much you can save using your residents' parking disc

£80 saved
By parking for two hours a week 30 times a year

£140 saved
By using your residents' car parking pass every week

Tackling hidden modern slavery

We have approved measures to help detect and prevent modern slavery.

Incidents are often hidden because victims are reluctant to seek help.

Councillor Amanda Serjeant, our deputy leader, said: "Incidents of modern slavery do happen in our borough and it is important we do our part to help prevent it and detect it where it is happening."

"We have hundreds of staff visiting homes and businesses in Chesterfield each week. They are in the community looking out for signs that people are being coerced to do something they don't want to due to emotional or financial pressure."



We have joined 40 local authorities in signing up to the Co-operative Party Charter Against Modern Slavery and committed to delivering actions listed in our annual Modern Slavery Statement which include:

- Ensuring all staff receive safeguarding training to spot and report signs of modern slavery, with those visiting business premises given a higher level of training to know how to handle issues they identify
- Ensuring all new suppliers of goods or services confirm they are complying with the requirements of the Modern Slavery Act, where the law applies to them
- Ensuring contractors and sub-contractors have relevant safeguarding policies, procedures and training in place
- Ensuring staff appointed by the council are legally entitled to work in the UK
- Having a whistleblowing policy so staff can report suspicions about someone being subject to modern slavery

You can report suspicions about modern slavery online at www.modernslavery.org or by ringing 0800 0121 700.

Join our estate litter picks

We are looking for people who are interested in helping out with estate litter picks taking place between Friday 22 March and Tuesday 23 April.

The estate litter picks are part of the national campaign, Great British Spring Clean.

Whether you are a group of three or 20 volunteers, we would still like to hear from you.

The tenant participation team, who are organising the event, will provide the following equipment:

- Litter pickers
- High visibility jackets
- Gloves
- And anything else required to carry out the work



If you want to get involved with an estate litter pick, please call the team on (01246) 345147.

Clean streets and community involvement also form part of the Chesterfield in Bloom campaign. We will be launching this year's gardening competition soon.

The campaign forms our entry into the regional East Midlands in Bloom competition. Last year we won gold with the judges commenting on the cleanliness of the borough.

Dementia friendly screening

There will be a special dementia friendly screening of *The Band Wagon* starring Fred Astaire, Cyd Charisse, Oscar Levant at the Winding Wheel Theatre on Wednesday 8 May.

Doors will open at 1pm ahead of the film starting at 1.30pm.

Customers with dementia can see the film for £4 and may bring one carer, family member or friend with them for free.

The cost includes tea or coffee, biscuits and cake.

As well as watching the film, there will also be the opportunity to take part in activities and to chat.

To book, call the Chesterfield Theatres box office on (01246) 354222 or visit the Chesterfield Theatres website: www.chesterfieldtheatres.co.uk.

Supporting our high street

One of the issues we receive the most queries about from our residents is the future of Chesterfield town centre and the local economy. We put some of the most frequently asked questions to the council leader, Councillor Tricia Gilby.

Why are there so many empty shops in Chesterfield town centre?

We are always sorry to see shops closed in the town centre. The latest figures show that 92.1 per cent of shop units in the town centre are occupied with 7.9 per cent of units vacant. This is more than 4 per cent below the national average of vacant properties.

Why does the council allow so many pound shops and cafés in the town centre?

We have a great selection of shops in and around the town centre with independent retailers as well as national chains.

The council has only a limited role in this retail mix – out of the 354 retail units in the town centre, the council owns only 89.

Many of the shop units are owned by private landlords who decide what types of businesses occupy the premises and the rent they charge.

Why doesn't the council reduce business rates?

Although the council collects business rates, we are not responsible for setting them; business rates are set by the Government, which also keeps most of the money raised.

Business rates are based on the estimated value of a property used for business use on the open market.

When the Government announces business rate relief for certain premises, we will apply this immediately. Some small businesses will also be able to apply for relief depending on the size of the business.

Why has the council let the market dwindle in size?

The size of the market reflects changes in shopping trends with the increase in both online shopping and discount stores. This year has seen market rents frozen for the fourth year in a row.

We continue to work hard to attract new traders, which includes council staff visiting other markets and also provide incentives to support them to establish their businesses.

We have a thriving flea market each Thursday and the Artisan Market organised in association with The Market Co. on the last Sunday of each month – see pages 30 to 31 for details.

Why doesn't the council offer free/reduced rate parking to encourage shoppers?

We offer free parking for Chesterfield borough residents before 10am and after 3pm from Monday to Saturday and all day on Sundays and bank holidays – look out for the parking pass with your Council Tax leaflet for the year.

We also offer a discounted rate for all visitors to the town centre allowing them to park for three hours for just £3, working out at £1 an hour.

We also have scratchcards which will save you money. For more information, visit: www.chesterfield.gov.uk/parking

The amount of homeless people and people on drink/drugs in town puts me off visiting, why hasn't the council done anything about this issue?

The council has worked closely with the police in introducing the Public Space Protection Orders (PSPOs) in the town centre, which allow the police and council enforcement officers to remove people causing anti-social behaviour and distress to other people using the area.

The council and the police have also funded work to the recesses at the back of the Pavements Shopping Centre to prevent people from gathering there and causing anti-social behaviour.

If you see anyone causing anti-social behaviour, please report it to the police by calling 111.

In addition, we have worked with our neighbouring councils, Derby City Mission and local churches to provide a regular night shelter this winter.

Year round, the council also works with Pathways to ensure homeless people get the support they need.

More information is at: www.chesterfield.gov.uk/homelessness





Supporting our market traders

At more than 800 years old, Chesterfield market is one of the oldest in the country and is a great tourist attraction, bringing in hundreds of visitors to the town centre each year.

We are always looking to welcome new traders to the market with stalls available from less than £10.

Kieron Salt stands each Friday and Saturday with Peak Artisan selling locally produced artisan breads and produce.

He says: "Since we started standing on the market in October last year, we're having a lot of repeat customers and great feedback with people coming specially on a Friday and Saturday to buy their bread and cakes.

"We even have a couple who come over from Sheffield on a Saturday to stock up on our Ancient Grains loaves.

"Obviously we'd like Chesterfield, and the market to be busier, with more stalls, but we've only been standing through autumn and winter so far, so are hoping that things pick up in the spring and summer."

Councillor Steve Brunt, the council's cabinet member for town centres and visitor economy,

says: "We are always pleased to welcome new traders to Chesterfield market and it's great to hear of the success that Peak Artisan has had in the last few months.

"We work to support our traders and encourage new ones – last autumn we took the decision to freeze market rents for the fourth year running and we have rents available for less than £10 per day – if you're interested in standing, get in touch with the markets team."

Markets in Chesterfield

We have the general market each Monday, Friday and Saturday, artisan market on the last Sunday of each month, the young persons' market on the last Sunday of January, April, July and October as well as annual events including MotorFest and medieval fun day in the summer.

Information on Chesterfield market is available at:
www.chesterfield.gov.uk/markets.

Get your walking boots on

Tickets are now available for this year's Chesterfield Area Walking Festival.

The festival takes place from Saturday 11 to Sunday 18 May with a series of walks across north Derbyshire suitable for all abilities.

You can enjoy the Chesterfield area on foot combining a walk with a boat trip along the Chesterfield Canal, or discover George Stephenson's connection with Chesterfield with a talk from George himself at Chesterfield Museum.

If you're looking for a challenge, try the Chesterfield Round Walk, a 34 mile trek through the countryside or even a short walk around the town or a family ramble of two or three miles.

You can choose from a walk starting with a ride on a bus, or a walk and talk about Chesterfield's black and white buildings. Try out Nordic Walking or finish off with beer tasting at Brampton Brewery.

Most walks are free but early booking is recommended as they go quickly.

To book, visit:
www.chesterfieldwalkingfestival.co.uk, call (01246) 345777 or 345778 or visit Chesterfield Visitor Information Centre in Rykneld Square, opposite the Crooked Spire church.

Easter events at Chesterfield Museum

We have interactive events happening at Chesterfield Museum this Easter.



Youngsters can meet 'Bess of Hardwick' on Thursday 18 April and find out more about her amazing life.



On Thursday 25 April, we have an alchemist. Visitors can ask if he is a scientist or a wizard, examine his strange laboratory equipment and watch weird and wonderful experiments.

The museum is open each Monday, Thursday, Friday and Saturday from 10am to 4pm.

Admission is free.

Historic house's murky past

Find out about Revolution House's role in the overthrow of King James II in 1688 in an exhibition at the historic house in Old Whittington this spring.

You can visit each Saturday, Sunday and Bank Holiday Monday from Saturday 6 April until Sunday 21 September from 11am to 4pm.

Admission is free but any donations towards the upkeep of the house will be welcome.

For more information, visit www.chesterfield.gov.uk/revolutionhouse.

What's on

Chesterfield Market

Open air market each Monday, Friday and Saturday. Flea market each Thursday.



Artisan market

in association with The Market Co. Sundays 31 March, 28 April, 26 May



Chesterfield Area Walking Festival

Saturday 11 to Sunday 19 May
To book, visit:
www.chesterfieldwalkingfestival.co.uk

Chesterfield Museum

Open each Monday, Thursday, Friday and Saturday, 10am to 4pm. Admission free to exhibitions and events but donations are welcome.

Tel: (01246) 345727
www.chesterfield.gov.uk/museum

Happy Birthday

until 5 April
Marking the 140th anniversary of the Stephenson Memorial Hall, the 70th anniversary of the

Pomegranate Theatre and the 25th anniversary of Chesterfield Museum.

The Tudors

23 March to 15 June

A fun and hands on exhibition for children to learn all about Tudor life.



Revolution House

The historic house is open each Saturday, Sunday and Bank Holiday Monday from Saturday 6 April until Sunday 29 September. Admission free but donations are welcome.

Tel: (01246) 345727
www.chesterfield.gov.uk/revolutionhouse



The history of Revolution House

Find out more about the house's history including its part in the plot to overthrow King James II in 1688.

Winding Wheel Theatre

www.chesterfieldtheatres.co.uk
Box office: (01246) 345222



Ben Fogle: Tales from the Wilderness

Friday 22 March, 7.30pm

From crossing Antarctica to conquering Everest, Ben takes his audience on an inspiring adventure.

Steeleye Span

Saturday 23 March, 7.30pm

Celebrating their 50th anniversary, the group present a night of favourites and surprises from down the decades.

Spotlight Comedy Club

Thursday 28 March, 8pm

Featuring Noel James and Rahul Kohli. For ages 18+, acts subject to change.

Hormonal Housewives

Friday 29 March, 7.30pm

A witty look at life as a 21st century woman.



Aliens Love Underpants

Sunday 7 April, 1pm and 4pm

A zany and hilarious tale based on the best-selling children's book.



The Little Mix Experience

Friday 12 April, 6pm

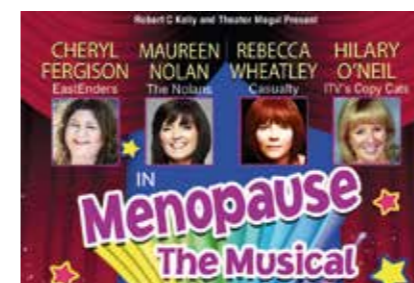
Tribute featuring songs including DNA, Wings, Salute, Black Magic, Love Me Like You, Secret Love Song.



80s Mania

Saturday 20 April, 7.30pm

Featuring tributes to Duran Duran, The Human League, Madonna, Wham! and many more.



Menopause The Musical

Tuesday 30 April, 7.30pm

Starring Cheryl Fergison from EastEnders, Nolan sister Maureen Nolan, Casualty's Rebecca Wheatley and Copy Cats' Hilary O'Neil.

Pomegranate Theatre

www.chesterfieldtheatres.co.uk
Box office: (01246) 345222

Bouncers

Thursday 28 to Saturday 30 March, 7.30pm

Return of the smash-hit comedy presented by the John Godber Company and the Theatre Royal Wakefield.

The Lady Vanishes

Monday 1 to Saturday 6 April, evenings 7.30pm, Wednesday matinee 2pm, Saturday matinee 3pm

Husband and wife Juliet Mills and Maxwell Caulfield lead the star cast in the latest instalment of the Classic Thriller Theatre Company.



The Lindisfarne Story

Sunday 7 April, 7.30pm

History of the Geordie group from the 1960s to the present day including classic songs, rare video, audio and photographs.

Beauty and the Beast - Easter Pantomime

Saturday 13 April, 2pm and 6pm

Fun for all the family in this classic story starring former Atomic Kitten Kerry Katona and family favourite Basil Brush.

The Trials of Oscar Wilde

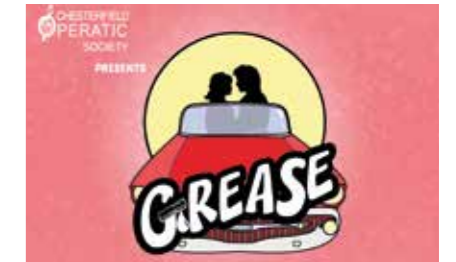
Sunday 14 April, 7.30pm

European Arts Company presents a dramatisation of the libel and criminal trials of Oscar Wilde, written by his grandson Merlin Holland.

Dance it Out!

Tuesday 16 to Saturday 20 April, 6.30pm

A dazzling combination of all genres of dance and music, featuring tots to seniors.



Grease the Musical

Wednesday 1 to Saturday 4 May, evenings 7.15pm, Saturday matinee 2.15pm

Amateur production by Chesterfield Operatic Society.

Pomegranate Screenings

Pomegranate Screenings

Highlights from film and satellite broadcasts at the Pomegranate Theatre

Royal Opera Live: Faust

Sunday 5 May, 2pm

Featuring singers including Michael Fabiano, Diana Damrau and Erwin Schrott.

RSC Live: As You Like It

Thursday 9 May, 7pm.

A riotous, exhilarating version of Shakespeare's romantic comedy presented by the Royal Shakespeare Company.

National Theatre Live: All My Sons

Tuesday 14 May, 7pm

Broadcast live from The Old Vic Theatre in London starring Academy Award-winner Sally Field and Bill Pullman.

Contact us

We provide more than 50 services to our residents including: waste collection and recycling, street cleaning, leisure and park facilities, housing, environmental protection, planning, regeneration, housing, markets, theatres and tourism.

The answers to most of your queries will be available on our website: www.chesterfield.gov.uk.

If you can't find what you are looking for, you can fill in a contact form www.chesterfield.gov.uk/contact.

For general enquiries, you can call us on

(01246) 345345

For enquiries about specific services call:

Chesterfield Theatres box office

(01246) 345222

box.office@chesterfield.gov.uk

Chesterfield Visitor Information Centre

(01246) 345777 or 345778

tourism@chesterfield.gov.uk

Healthy Living Centre

(01246) 345666

hlcenquiries@chesterfield.gov.uk

Queen's Park Sports Centre

(01246) 345555

qpsscquiries@chesterfield.gov.uk

For housing related queries please call our main number except for:

Careline

0300 323 0076

Homelessness prevention team

(01246) 345825

homelessness.prevention@chesterfield.gov.uk

Homelessness (out of hours)

0845 6058 058

(01629) 532600

On the Move – for all council house waiting list and allocations queries

Visit the website at www.onthemove-cbc.org.uk

(01246) 345700

onthemove@chesterfield.gov.uk

Neighbourhoods team

(01246) 345071

Rents and rent recovery

(01246) 345501 or 345510

Reporting housing repairs

0800 5875 659

repair.requests@chesterfield.gov.uk

Emergency housing repairs – out of hours only

(01246) 345041

Are we accessible to you?

کیا ہم تک آپ کی رسائی ہے؟ اگر نہیں تو ہمیں بتائیے!

你可覺得易於與我們接觸？若不能的話，請提出要求。

Czy łatwo jest skontaktować się z nami? Jeżeli nie, powiedz nam o tym!

Siamo accessibili nei vostri riguardi? In caso contrario rivolgetevi a noi!

We want everyone to be able to read our publications. We aim to provide what you need to be able to understand our information or talk or write to us.

On request we will provide free of charge:

Language interpreters, including for sign language

Translation of written material into other languages

Material in braille, large print and recorded onto CD.

Please contact us:

General enquiries: 01246 345345 Text 07960 910264

Web: www.chesterfield.gov.uk Email: info@chesterfield.gov.uk

Published by

Chesterfield Borough Council, Town Hall, Rose Hill, Chesterfield, Derbyshire, S40 1LP

Web: www.chesterfield.gov.uk

Email: info@chesterfield.gov.uk

Telephone: (01246) 345345

Get the latest news

Follow us on:
Twitter @ChesterfieldBC

Like us on Facebook -
ChesterfieldBoroughCouncil

See our videos on YouTube -
search for Chesterfield Borough Council's channel